

100% Money Back
Guarantee

Vendor:Alcatel-Lucent

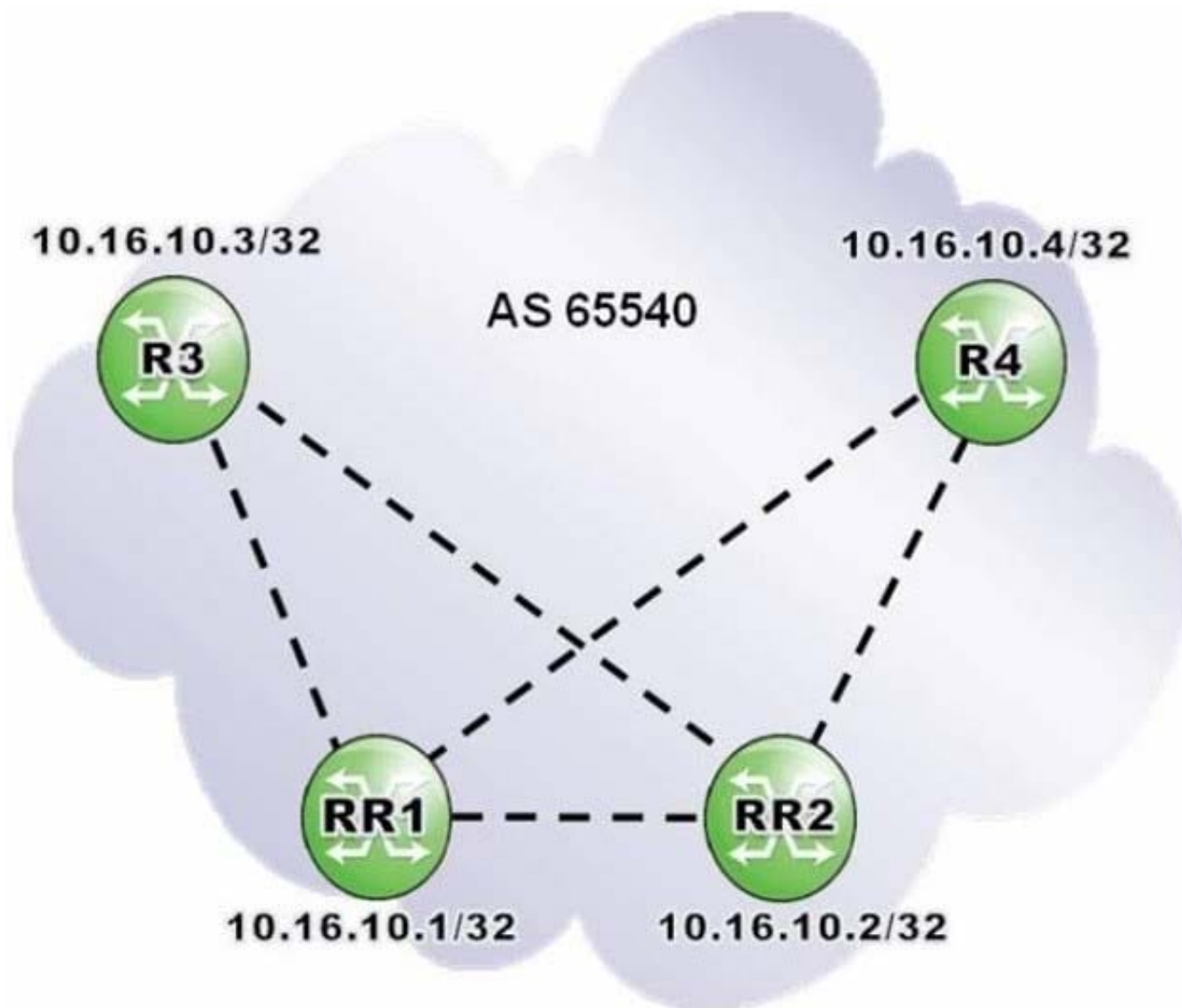
Exam Code:4A0-102

Exam Name:Alcatel-Lucent Border Gateway Protocol

Version:Demo

QUESTION 1

Click the exhibit.



Routers RR1 and RR2 are redundant route reflectors for clients R3 and R4. Which of the following is a valid configuration on router RR1?

A. RR1>config>router>bgp# info

```
-----  
group "AS 65540 iBGP"  
  cluster 10.16.10.1  
  peer-as 65540  
  neighbor 10.16.10.2  
  exit  
  neighbor 10.16.10.3  
  exit  
  neighbor 10.16.10.4  
  exit
```

B. RR1>config>router>bgp# info

```
-----  
group "AS 65540 iBGP"  
  peer-as 65540  
  neighbor 10.16.10.2  
    cluster 10.16.10.2  
  exit  
  neighbor 10.16.10.3  
    cluster 10.16.10.1  
  exit  
  neighbor 10.16.10.4  
    cluster 10.16.10.1  
  exit  
  exit
```

C. RR1>config>router>bgp# info

```
-----  
group "AS 65540 iBGP"  
  peer-as 65540  
  neighbor 10.16.10.2  
  exit  
  neighbor 10.16.10.3  
    cluster 10.16.10.1  
  exit  
  neighbor 10.16.10.4  
    cluster 10.16.10.1  
  exit  
  exit
```

D. RR1>config>router>bgp# info

```
-----  
group "AS 65540 iBGP"  
  peer-as 65540  
  neighbor 10.16.10.3  
    cluster 10.16.10.1  
  exit  
  neighbor 10.16.10.4  
    cluster 10.16.10.1  
  exit  
  exit
```

A. Option A

B. Option B

C. Option C

D. Option D

Correct Answer: C

QUESTION 2

An Alcatel-Lucent 7750 SR is configured with a local preference of 250. If it receives a BGP update with a local preference of 500, what local preference is sent to its eBGP peers?

A. 100

B. 250

C. 500

D. None

Correct Answer: D

QUESTION 3

The following policies are configured and exported using "export "Policy-1" "Policy-2"". Assuming both "Client-1" and "Client-2" are properly defined on the router, which routes are advertised?

```
prefix-list "Client-1"  
  prefix 192.168.1.0/29 exact  
exit  
prefix-list "Client-2"  
  prefix 192.168.2.0/29 exact  
exit  
policy-statement "Policy-1"  
  entry 10  
    from  
      prefix-list "Client-1"  
    exit  
    action accept  
  exit  
exit  
default-action accept  
exit  
policy-statement "Policy-2"  
  entry 10  
    from  
      prefix-list "Client-2"  
    exit  
    action accept  
  exit  
exit  
default-action reject  
exit
```

- A. Client-1 routes only.
- B. Client-2 routes only.
- C. Client-1 and Client-2 routes.
- D. Neither Client-1 nor Client-2 routes.

Correct Answer: C

QUESTION 4

Upon the successful establishment of a TCP session between peers, what type of BGP message is exchanged?

- A. OpenSent
- B. Keepalive

C. Open

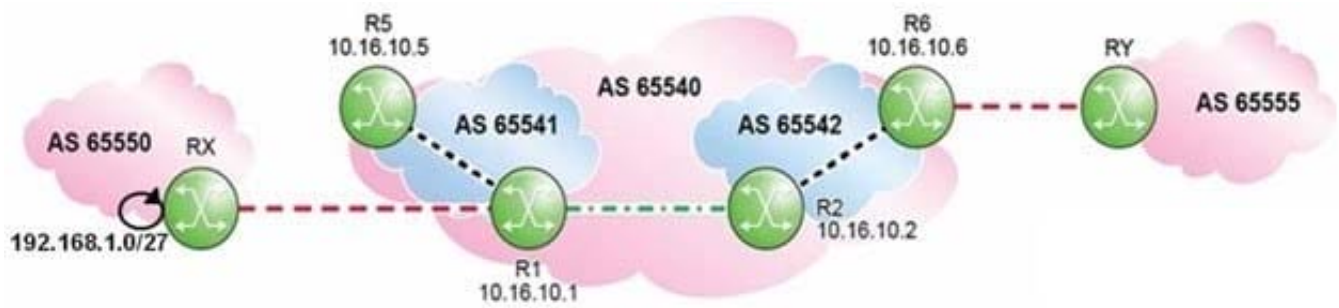
D. Notification

E. Update

Correct Answer: C

QUESTION 5

Click the exhibit.



Which of the following is a valid BGP configuration for router R2? A. Option A

- A. R2>config>router>bgp# info

```
-----  
group "Conf-eBGP"  
  peer-as 65541  
  neighbor 10.16.10.1  
  exit  
exit  
group "Member-AS"  
  neighbor 10.16.10.6  
  peer-as 65542  
  exit  
exit  
no shutdown
```

- B. R2>config>router>bgp# info

```
-----  
group "Conf-eBGP"  
  peer-as 65541  
  neighbor 10.16.10.1  
  exit  
exit  
group "Member-AS"  
  neighbor 10.16.10.6  
  peer-as 65540  
  exit  
exit  
no shutdown
```

- C. R2>config>router>bgp# info

```
-----  
group "Conf-eBGP"  
  peer-as 65540  
  neighbor 10.16.10.1  
  exit  
exit  
group "Member-AS"  
  neighbor 10.16.10.6  
  peer-as 65542  
  exit  
exit  
no shutdown
```

- D. R2>config>router>bgp# info

```
-----  
group "Conf-BGP"  
  peer-as 65540  
  neighbor 10.16.10.1  
  exit  
  neighbor 10.16.10.6  
  exit  
exit  
no shutdown
```

B. Option B

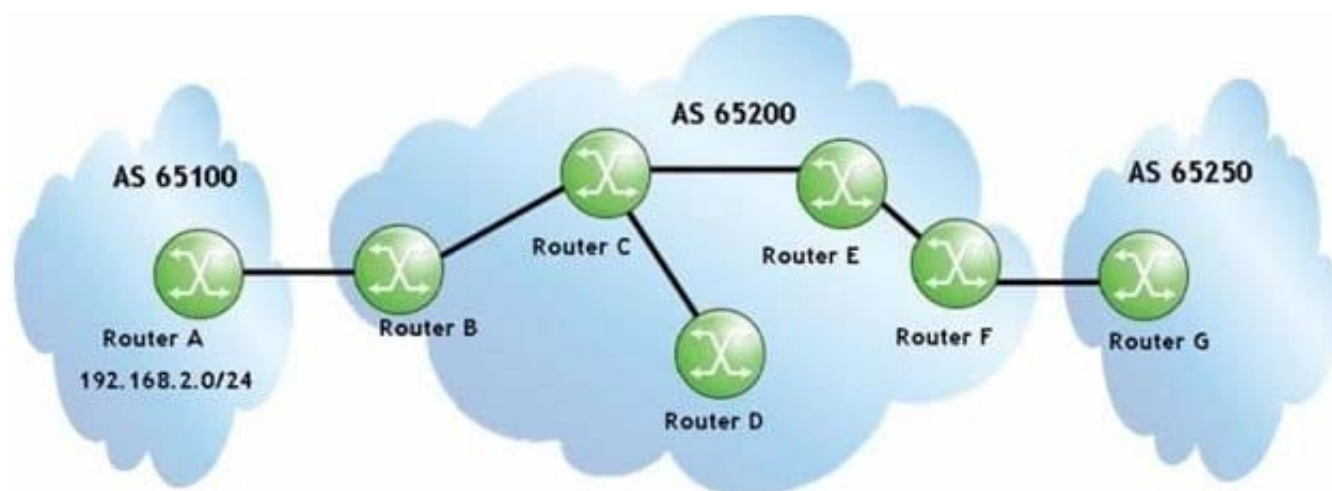
C. Option C

D. Option D

Correct Answer: A

QUESTION 6

Click the exhibit.



Routers C and E are route reflectors. When the update for prefix 192.168.2.0/24 is received at router F, what will be the Originator_ID attribute?

A. The router ID of router A.

B. The router ID of router B.

C. The router ID of router C.

D. It will not be set.

Correct Answer: B

QUESTION 7

Which of the following about a single-homed AS is FALSE?

A. A single-homed AS is also known as a stub AS.

B. A single-homed AS is also known as a leaf AS.

C. A single-homed AS uses either the ISP AS number or a private AS number.

D. A single-homed AS can be either transit or non-transit

Correct Answer: D

QUESTION 8

Which of the following is NOT a goal of BGP routing policies?

- A. To protect external networks from instability.
- B. To communicate the architecture of an AS to external ASs.
- C. To protect the local AS and other external ASs from bad NLRI.
- D. To optimize ingress and egress traffic patterns to best serve the users of the AS.

Correct Answer: B

QUESTION 9

Based on the default settings for the Alcatel-Lucent 7750 SR, when a policy change is made and committed, what action is required by the user for the change to take effect?

- A. Execute a command to re-evaluate all routes in the Local-RIB against the configured export policies.
- B. Execute a command to re-evaluate all routes in the RIB-In against the configured import policies.
- C. Execute a command to reset the BGP session with the affected peer or peers.
- D. No further action is required.

Correct Answer: D

QUESTION 10

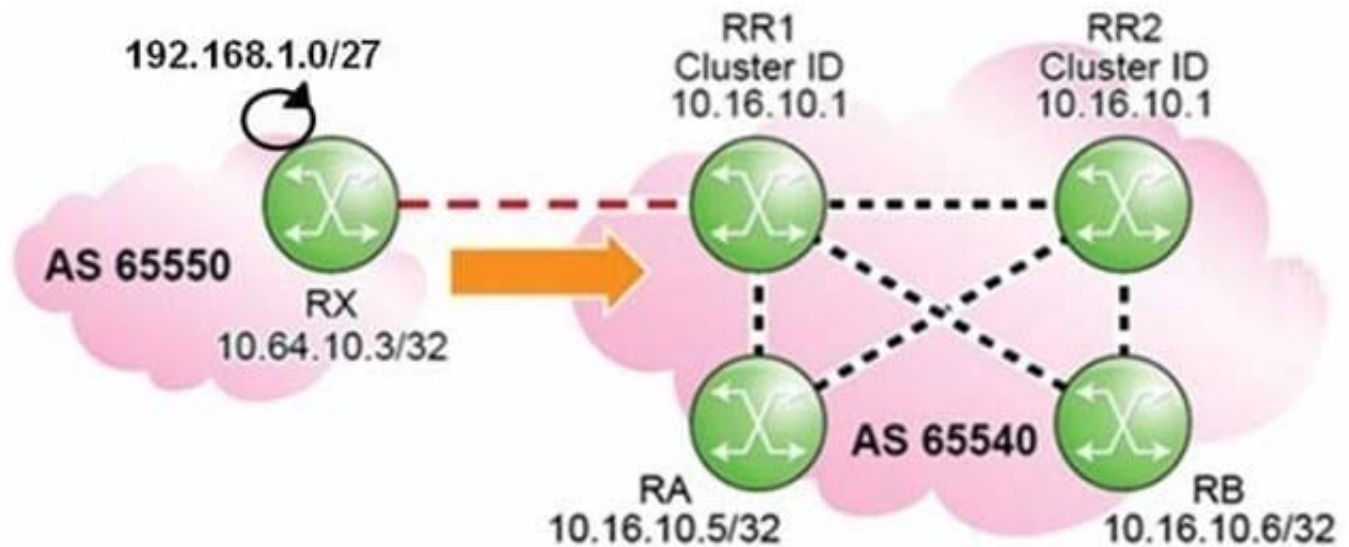
Which of the following parameters does NOT have to match for an iBGP session to be successfully established?

- A. BGP version number.
- B. The local AS number.
- C. The Hold Time.
- D. Authentication.

Correct Answer: C

QUESTION 11

Click the exhibit.



Routers RR1 and RR2 are route reflectors with the same Cluster-ID. When the update for prefix 192.168.1.0/27 is received at router RA2, what are the Originator_ID and Cluster_List attributes?

- A. Originator_ID of RR1; and Cluster_List of 10.16.10.1.
- B. Originator_ID of RX; and Cluster_List of 10.16.10.1.
- C. Originator_ID of RR1; and the Cluster_List is not set.
- D. Neither the Originator_ID nor the Cluster_List is set.

Correct Answer: D

QUESTION 12

Which of the following regarding "well-known discretionary" BGP attributes is TRUE?

- A. They must be recognized by all peers and included in all BGP updates.
- B. They are discarded if not recognized by the recipient.
- C. They must be recognized by all peers and optionally included in BGP updates.
- D. The receiving router sends a notification if a well-known discretionary attribute is not present in an update.

Correct Answer: C