

**100%** Money Back  
**Guarantee**

**Vendor:**IBM

**Exam Code:**C2020-011

**Exam Name:**IBM SPSS Statistics Level 1 v2

**Version:**Demo

**QUESTION 1**

Which options are available to edit bar charts? (Choose three.)

- A. Changing patterns displayed in bars
- B. Changing the major increment on the Y axis scale
- C. Displaying data value labels
- D. Changing the variable displayed on the X axis

Correct Answer: ABC

---

**QUESTION 2**

If you use the IBM SPSS Statistics Select Cases dialog to conduct analysis on a subset of cases and you want to keep all cases in the same dataset, which option is appropriate?

- A. Copy unselected cases to a new dataset
- B. Copy selected cases to a new dataset
- C. Filter out unselected cases
- D. Delete unselected cases

Correct Answer: C

---

**QUESTION 3**

If you use the IBM SPSS Statistics Select Cases dialog to conduct analysis on a subset of cases and you want to keep all cases in the same dataset, which option is appropriate?

- A. Copy unselected cases to a new dataset
- B. Copy selected cases to a new dataset
- C. Delete unselected cases
- D. Filter out unselected cases

Correct Answer: D

---

**QUESTION 4**

In the output of the CROSSTABS procedure, large residuals indicate agreement between the data and the null

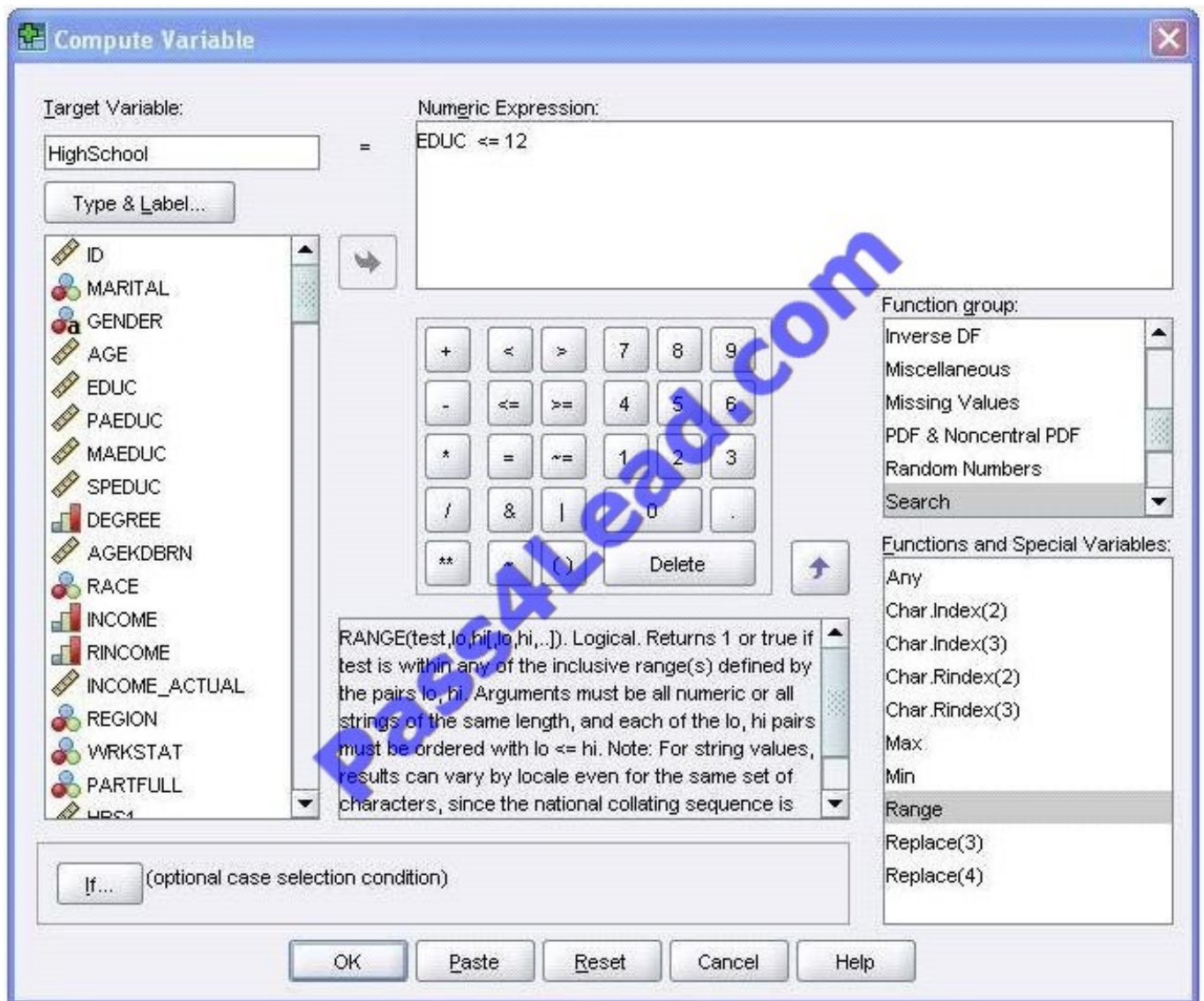
hypothesis of independence.

- A. True
- B. False

Correct Answer: B

### QUESTION 5

Using the Compute Variable dialog below, the target variable HighSchool will have the following values. (Choose two.)



- A. Value 1 if EDUC is less than or equal to 12
- B. System-missing value if EDUC is greater than 12
- C. The same value as EDUC if EDUC is less than or equal to 12

D. Value 0 if EDUC is greater than 12

Correct Answer: AB

---

#### **QUESTION 6**

What is the main advantage of using syntax?

- A. It can be run using the menus.
- B. It is the most popular way of running IBMSPSS Statistics.
- C. It can be saved and retrieved for subsequent analyses.
- D. It is the same format as syntax in other statistical software.

Correct Answer: C

---

#### **QUESTION 7**

Which variable name is correctly formed for use in an IBM SPSS Statistics data file?

- A. 3job\_categories
- B. job\_3\_categories
- C. Respondents\ age
- D. Employee safety

Correct Answer: B

---

#### **QUESTION 8**

Which operations are available from the File menu? (Choose three.)

- A. Open and Save data files
- B. Print the contents of the active IBM SPSS Statistics window
- C. Exit IBM SPSS Statistics
- D. Run the FREQUENCIES procedure

Correct Answer: ABC

---

#### **QUESTION 9**

In order to import data from databasesources such as Access and Oracle into IBM SPSS Statistics, you must first export

the data from the database to a tad file and then import this tad file into IBM SPSS Statistics?

- A. True
- B. False

Correct Answer: B

---

### QUESTION 10

Which Pivoting Tray corresponds to the illustrated cross tabulation?

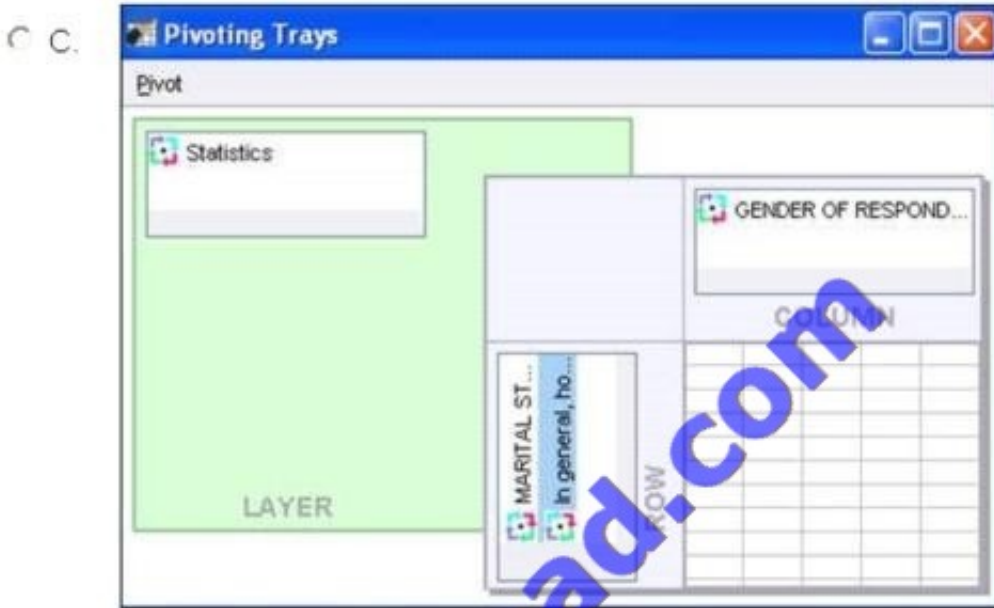
C A.



C B.



The image shows two screenshots of the 'Pivoting Trays' dialog box in IBM SPSS Statistics. Both screenshots show a 'Pivot' section with a 'Statistics' tray on the left, a 'LAYER' tray, and a 'COLUMN' tray. The 'ROW' tray contains 'In general, ho...'. The 'COLUMN' tray in screenshot A contains 'GENDER OF RESPOND...', while in screenshot B it contains 'GENDER OF RESPO...' and 'MARITAL STATUS'. A grid is visible on the right of both screenshots.



A. Option A

B. Option B

C. Option C

D. Option D

Correct Answer: C

#### QUESTION 11

The IBM SPSS Statistics Select Cases provides various ways to select cases included in further analysis. If you needed to conduct analysis on those respondents whose age is more than 30 years, earning in excess of \$40000, which option

in this dialog would you choose to specify these criteria?

- A. Random sample of cases
- B. Based on time or case range
- C. Use filter variable
- D. If condition is satisfied

Correct Answer: D

---

## QUESTION 12

There are two major types of errors one can make when attempting to draw conclusions about the larger population based on the information collected in the sample. For example, when performing an Independent Samples T-Test, one type of error that can occur is when there are significant differences between the groups based on a scale level dependent variable, but the test fails to detect them. Which of the following choices describe this sort of error? (Choose two.)

- A. Type i error
- B. Type ii error
- C. False negative
- D. False positive

Correct Answer: BC

To Read the [Whole Q&As](#), please purchase the [Complete Version](#) from [Our website](#).

## Try our product !

**100%** Guaranteed Success

**100%** Money Back Guarantee

**365** Days Free Update

**Instant Download** After Purchase

**24x7** Customer Support

Average **99.9%** Success Rate

More than **800,000** Satisfied Customers Worldwide

Multi-Platform capabilities - **Windows, Mac, Android, iPhone, iPod, iPad, Kindle**

## Need Help

Please provide as much detail as possible so we can best assist you.

To update a previously submitted ticket:



 <p><b>One Year Free Update</b> Free update is available within One Year after your purchase. After One Year, you will get 50% discounts for updating. And we are proud to boast a 24/7 efficient Customer Support system via Email.</p>	 <p><b>Money Back Guarantee</b> To ensure that you are spending on quality products, we provide 100% money back guarantee for 30 days from the date of purchase.</p>	 <p><b>Security &amp; Privacy</b> We respect customer privacy. We use McAfee's security service to provide you with utmost security for your personal information &amp; peace of mind.</p>
---	---	--

Any charges made through this site will appear as Global Simulators Limited.

All trademarks are the property of their respective owners.