

100% Money Back
Guarantee

Vendor:ISTQB

Exam Code:CTFL-FOUNDATION

Exam Name:ISTQB Certified Tester Foundation Level

Version:Demo

QUESTION 1

Which of the following tasks belong to "Test planning"?

- A. Scheduling test analysis and design activities
- II. Assigning resources to the different activities
- III. Selecting metrics for monitoring
- IV. Setting up the test environment
- B. Acquiring and preparing test data
- C. I, II, III, IV
- D. I, II, III.
- E. III, IV, V
- F. I, II

Correct Answer: A

QUESTION 2

A "functional test" is...

- A. ...a test focused on the efficiency of the system.
- B. ...a dynamic test for which the tests are based on the specification of the test object.
- C. ...a static comparison of test and requirements specification of a test object.
- D. ...a test for which the test cases and test data are based on the structure of the test object.

Correct Answer: C

QUESTION 3

Tools like change Man, Clear case are used as..?

- A. functional automation tools
- B. performance testing tools
- C. configuration management tools
- D. none of the above

Correct Answer: C

QUESTION 4

Which of the following is NOT a characteristic of good testing, independent of the development life cycle model?

- A. Each test level has objectives specific for the test level.
- B. Testers are involved in reviewing documents as soon as drafts are available.
- C. Every development activity is matched by a corresponding testing activity.
- D. Testers are involved in reviewing documents as soon the documents are approved.

Correct Answer: B

QUESTION 5

Failure is _____

- A. Incorrect program behavior due to a fault in the program
- B. Bug found before product Release
- C. Bug found after product Release
- D. Bug found during Design phase

Correct Answer: A

QUESTION 6

What if the project isn't big enough to justify extensive testing..?

- A. Use automation tool for testing
- B. Use risk based analysis to find out which areas need to be tested
- C. Both a and b
- D. None of the above

Correct Answer: B

QUESTION 7

In addition to risk, identify TWO other components of a testing strategy.

- A. The entry and exit criteria for each test phase
- B. Test training needs for the project resources

- C. The test design techniques to be used
- D. Test performance indicators
- E. The test schedule

Correct Answer: AC

QUESTION 8

Which of the following statements regarding inspection is NOT true?

- A. The main purpose of an inspection is to find solutions to the problems.
- B. An inspection can be performed by peers.
- C. An inspection may be led by a trained moderator who shall not be the author.
- D. An inspection shall follow a formal process based on rules and checklists with entry and exit criteria

Correct Answer: A

QUESTION 9

A test assessment has been carried out using the selected model as a reference framework. A number of recommendations have been identified and you are asked to prioritize them. Based on your knowledge of the project, you are expecting severe resistance to change. Which of the following would be the most important selection criterion for defining the priority of the recommendations?

- A. Synchronized with the overall long-term organizational strategy
- B. Defined according to the maturity model used
- C. Most visible to stakeholders
- D. Low costs actions first

Correct Answer: C

Testlet 1

Topic 8, Scenario 8, V2 "Test Proems Improvement\\'

You have raised the issue that improving the testing process is also dependent on the status of the software development process.

QUESTION 10

What is a test condition?

- A. A statement of test objectives and test ideas on how to test.

- B. An item or event that could be verified by one or more test cases.
- C. The process of identifying differences between the actual results and the expected results for a test.
- D. All documents from which the requirements of a component or system can be inferred.

Correct Answer: B

QUESTION 11

Which of the following test types are non-functional tests?

I) Acceptance test II) Regression test III) Stress test IV) Component test V) Reliability test

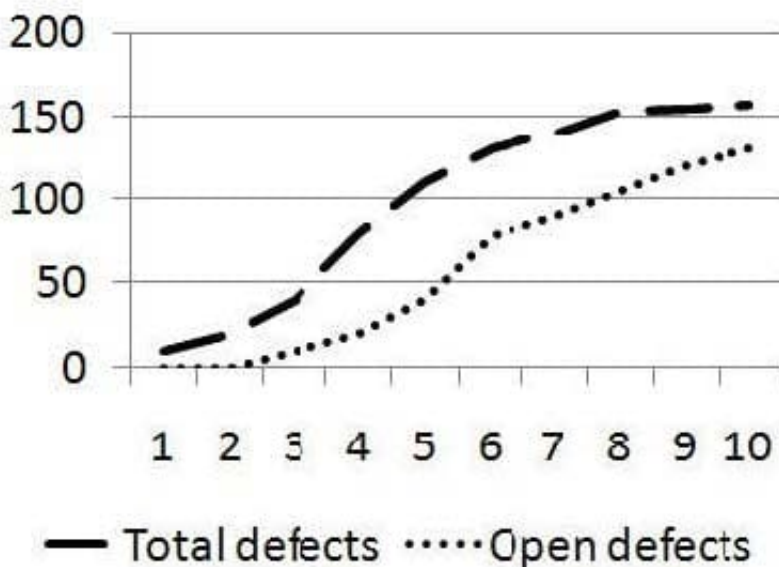
- A. II, III and V
- B. I, II and IV
- C. I, III and V
- D. III and V

Correct Answer: D

QUESTION 12

Given is the following defect removal chart reported at the end of system testing - showing total defects detected and closed defects (fixed and successfully retested). A number of open defects are classified as critical. All tests have been executed.

Based on the chart above, what is the most appropriate next test phase?



- A. Acceptance testing to verify the business process
- B. Acceptance testing to verify operational requirements
- C. Requirements testing as part of testing regulatory compliance
- D. Another system test cycle to verify defect resolution

Correct Answer: D Testlet 1

MIX QUESTIONS