

100% Money Back
Guarantee

Vendor:Oracle

Exam Code:1Z0-520

Exam Name:Oracle E-Business Suite R12.1
Purchasing Essentials

Version:Demo

QUESTION 1

During the cutover phase of a project to implement Oracle E-Business Suite release 12, you are responsible for converting historical account balances into Oracle General Ledger from a legacy system. There is no Account Code Combination setup in the Production Instance.

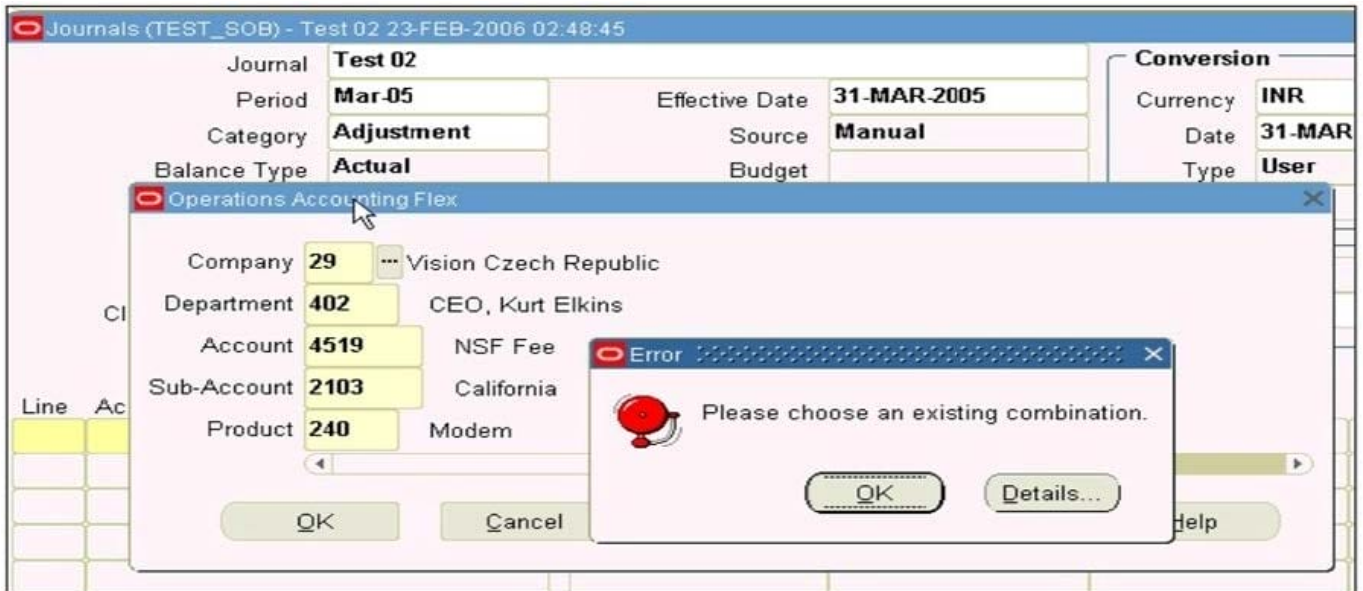
Identify the setup in the Accounting Key Flexfield structure that is required to perform this conversation.

- A. Define value Sets and assign them to Segments.
- B. Define Segments in the Accounting Flexfield structure.
- C. Qualify one of the Segments as the Balancing Segment.
- D. The Key Flexfield Segments have to be enabled and displayed.
- E. Select the "Allow Dynamic Inserts" check box in the Accounting Key Flexfield structure.

Correct Answer: E

QUESTION 2

View the exhibit.



While entering a journal in the Journals form, you enter a code combination of 29.402.4519.2103.240 in the five-segment Accounting Flexfield. However, you are unable to proceed after entering this account combination.

What could be the problem in the structure of the Accounting Flexfield?

- A. The "Freeze Rollup Groups" check box is selected.
- B. The "Allow Dynamic Inserts" check box is deselected.

C. The "Freeze Flexfield Definition" check box is selected.

D. The "Cross-Validate Segments" check box is selected.

Correct Answer: B

QUESTION 3

A Blanket Purchase Agreement Is created with the following cumulative price break:

Quantity > 0: Unit Price = \$5

Quantity > 20: Unit Price = \$4

Single line, single distribution releases are created as follows:

Release# 1 with quantity 15

Release# 2 with quantity 10

What are the unit price values on the releases?

A. Release1 \$5, Release2 \$5

B. Release1 \$4, Release2 \$4

C. Release1 \$5, Release2 \$4

D. It depends on the price tolerance for the line.

E. Release1 \$5, Release2 \$4 for a quantity of 5 and \$5 for a quantity of 5

Correct Answer: C

QUESTION 4

Which four must be set up to implement a position hierarchy for document approvals? (Choose four.)

A. Buyers

B. Employee Jobs

C. Approval Groups

D. Security Hierarchy

E. Employee Positions

F. Employee Locations

G. Approval Assignments

Correct Answer: BCEG

QUESTION 5

Select three true statements regarding the Workflow Document Creation prerequisite (PO Create Documents workflow). (Choose three.)

- A. Catalog quote must not be expired, but may be inactive.
- B. Supplier and supplier site are required on the requisition related to a contract purchase order.
- C. If a system Item is not associated with the requisition line, a supplier item number is required.
- D. Sourcing rules are required If the requisition originates in Oracle Purchasing or {Procurement.
- E. No source document is required for the PO Create Documents workflow to create a release or purchase order.
- F. The only time an approved supplier list is required is if your source document is a blanket purchase agreement and you are using a system item.

Correct Answer: BCF

QUESTION 6

When you view Item Supply and Demand Information on the Supply/Demand Detail form, Available Quantity is _____.

- A. the quantity on hand
- B. the nettable quantity on hand
- C. the reservable quantity on hand
- D. the projected on-hand quantity of the item, defined as: (all future sources of supply) – (all future sources of demand)
- E. the projected on-hand quantity of the item, defined as: (current available) + (all future sources of supply) – (all future sources of demand)

Correct Answer: E

QUESTION 7

Which two statements apply to a Physical Inventory Tag as defined by Inventory? (Choose two.)

- A. Physical Inventory Tags cannot be bar coded.
- B. It can contain a count for a group of a given item.
- C. It is produced and printed by the Generate Physical Inventory Tags function.
- D. It is unique for every stock locator/item/lot number/serial number combination.

E. It is used to indicate to the warehouse staff that a count has been recorded for that location, so that a duplicate count is not performed.

Correct Answer: BD

QUESTION 8

ABC Corporation has set up the Accounting Key Flexfield. It has also set up a Descriptive Flexfield to store vehicle information associated with the asset category "Vehicle".

Identify three correct statements. (Choose three.)

- A. The Descriptive Flexfield is called an "intelligent key structure".
- B. The Descriptive Flexfield for the asset category "Vehicle" captures only additional information.
- C. The Descriptive Flexfield for the asset category "Vehicle" appears as a normal field on a form.
- D. The combination of values in the Accounting Flexfield identifies a particular business entity or class of entities.
- E. You can define cross validation rules to control the allowable combinations of segment values for the Accounting Flexfield.

Correct Answer: CDE

QUESTION 9

XYZ Corp. has acquired ABC Corp. XYZ operates with Multi-Org Access Control. Consequently XYZ Corp. needs to add additional Operating Units. Identify the statement that describes the sequence for adding additional Operating Units.

- A. It is not possible to add additional Operating Units.
- B. Set the MO: Operating Unit profile option, run the Replicate Seed Data concurrent request, create the Operating Unit, and create new responsibilities as necessary:
- C. Set the MO: Security Profile profile option, run the Replicate Seed Data concurrent request, create the Operating Unit, and create new responsibilities as necessary.
- D. Create the Operating Unit, run the Replicate Seed Data concurrent request, create new responsibilities as necessary, and set up the MO: Default Operating Unit profile option.
- E. Create the Operating Unit, run the Replicate Seed Data concurrent request, assign the Operating Unit to a security hierarchy, run Security List maintenance concurrent program, create new responsibilities as necessary, and set up the MO: Security Profile profile option.

Correct Answer: E

QUESTION 10

Identify three true statements about the use of the Material Workbench. (Choose three.)

- A. Authorized users can create move orders in the Material Workbench.
- B. Authorized users can change material statuses in the Material Workbench.
- C. Authorized users can perform miscellaneous issues in the Material Workbench.
- D. Authorized users can perform miscellaneous receipts in the Material Workbench.
- E. Authorized users can perform pick confirm transactions in the Material Workbench.
- F. Authorized users can perform ship confirm transactions in the Material Workbench.
- G. Authorized users can view material across organizations in the Material Workbench.

Correct Answer: ABG

QUESTION 11

The warehouse has received new stock from an internal distribution warehouse. Which two receiving transactions can be used to put stock into the warehouse's inventory using the Intransit Inventory? (Choose two.)

- A. Direct Receipt
- B. Standard Receipt and Delivery
- C. Inter organization Direct Receipt
- D. Inter organization Receipt and Delivery
- E. Inter organization Miscellaneous Receipt

Correct Answer: CD

QUESTION 12

Which two reports detail pending inventory adjustments for a count? (Choose two.)

- A. Cycle Count Listing
- B. Physical Inventory Tag Listing
- C. Physical Inventory Counts Report
- D. Physical Inventory Adjustments Report
- E. Cycle Counts Pending Approval Report
- F. Cycle Count Entries and Adjustments Report

Correct Answer: DE