

**100%** Money Back  
**Guarantee**

**Vendor:**VMware

**Exam Code:**2V0-621D

**Exam Name:**VMware Certified Professional 6 – Data  
Center Virtualization Delta

**Version:**Demo

### QUESTION 1

An administrator has upgraded a Distributed vCenter Server environment from 5.5 to 6.0. What is the next step that should be taken?

- A. vCenter Inventory Service must be manually stopped and removed.
- B. vCenter Inventory Service must be changed from manual to automatic.
- C. vCenter Inventory Service must be manually stopped and restarted.
- D. vCenter Inventory Service must be changed from automatic to manual.

Correct Answer: A

Reference: <http://pubs.vmware.com/vsphere-60/index.jsp?topic=%2Fcom.vmware.vsphere.upgrade.doc%2FGUID-4BFB12D8-9FCA-4AB1-A44F-2986966F0AD5.html>

---

### QUESTION 2

An administrator notices that a Windows virtual machine is using 95% CPU in Task Manager. Which two actions should be taken to resolve this issue? (Choose two.)

- A. Increase the memory reservation of the virtual machine.
- B. Increase the CPU Shares on the resource pool where the virtual machine resides.
- C. Decrease the CPU reservation of the virtual machine.
- D. Increase the CPU limit on the resource pool where the virtual machine resides.

Correct Answer: BD

There are two ways to resolve high CPU usage. First increase CPU shares on resource pool where the VM resides. Secondly, increase CPU limit on the resource pool that serves the concerned VM.

---

### QUESTION 3

An administrator is creating a new Platform Service Controller Password Policy with the following requirements:

Minimum length: Minimum of 8 characters.

Restrict use: 6

Character requirements: At least one upper-case letter, one number, and one special character.

Identical adjacent characters: 0

When trying to assign the password "P@\$\$w0rd", the administrator receives an error that the password does not meet the Password Policy requirements.

Which part of the Password Policy does this password violate?

- A. Minimum length
- B. Restrict use
- C. Character requirements
- D. Identical adjacent characters

Correct Answer: D

---

#### QUESTION 4

An administrator observes that virtual machine storage activity on an ESXi 6.x host is negatively affecting virtual machine storage activity on another host that is accessing the same VMFS Datastore.

Which action would mitigate the issue?

- A. Enable Storage I/O Control.
- B. Configure Storage DRS.
- C. Enable the Dynamic Queue Depth Throttling option.
- D. Configure the Disk.SchedNumReqOutstanding parameter.

Correct Answer: A

---

#### QUESTION 5

Which two statements are true regarding VMFS3 volumes in ESXi 6.x? (Choose two.)

- A. Creation of VMFS3 volumes is unsupported.
- B. Upgrading VMFS3 volumes to VMFS5 is supported.
- C. Existing VMFS3 volumes are unsupported.
- D. Upgrading VMFS3 volumes to VMFS5 is unsupported.

Correct Answer: AB

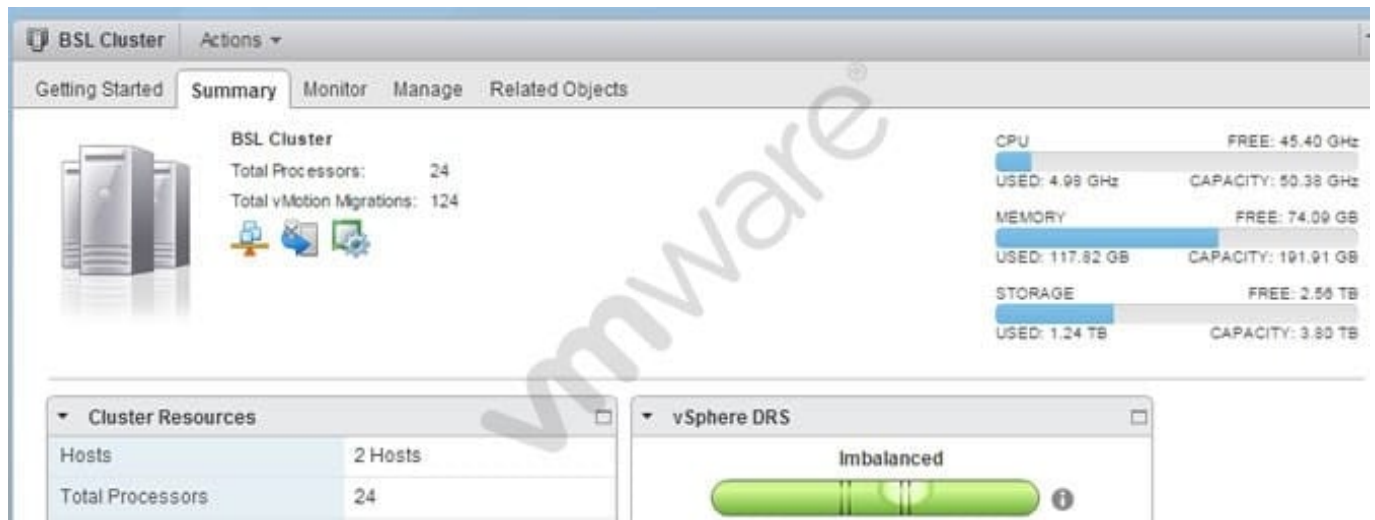
While a VMFS-3, which is upgraded to VMFS-5, provides you with most of the capabilities as a newly created VMFS-5, there are some differences. Both upgraded and newly created VMFS-5 support single-extent volumes up to 64TB and both support VMDK sizes of ~2TB, no matter what the VMFS file-block size is. However additional differences, although minor, should be considered when making a decision whether to upgrade to VMFS-5 or create new VMFS-5 volumes.

Reference: [http://www.vmware.com/files/pdf/techpaper/VMFS-5\\_Upgrade\\_Considerations.pdf](http://www.vmware.com/files/pdf/techpaper/VMFS-5_Upgrade_Considerations.pdf)

---

## QUESTION 6

Refer to the Exhibit.



An administrator is reviewing a vSphere Distributed Resource Scheduler (DRS) enabled Cluster and observes unexpected behavior as shown in the Exhibit. What are three potential causes of the cluster imbalance? (Choose three.)

- A. A local device is mounted to one or more virtual machines.
- B. DRS rules prevent virtual machines from being moved.
- C. vMotion is not configured and enabled.
- D. There are insufficient cluster resources to perform the migration.
- E. DRS has been configured for a conservative migration threshold.

Correct Answer: ABC

Cluster imbalance is often caused by a local device mounted to one or more VMs and the DRS rules are preventing the VMs from being moved. Similarly, check vMotion to see if it is configured and enabled.

---

## QUESTION 7

In a vSphere High Availability cluster, what is the VM Monitoring I/O stats interval default value?

- A. 60 seconds
- B. 90 seconds
- C. 120 seconds
- D. 180 seconds

Correct Answer: C

Occasionally, virtual machines or applications that are still functioning properly stop sending heartbeats. To avoid

unnecessary resets, the VM Monitoring service also monitors a virtual machine's I/O activity. If no heartbeats are received within the failure interval, the I/O stats interval (a cluster-level attribute) is checked. The I/O stats interval determines if any disk or network activity has occurred for the virtual machine during the previous two minutes (120 seconds). If not, the virtual machine is reset. This default value (120 seconds) can be changed using the advanced attribute `das.iostatsinterval`.

Reference: [https://pubs.vmware.com/vsphere-50/index.jsp?topic=%2Fcom.vmware.vsphere.avail.doc\\_50%2FGUID-62B80D7A-C764-40CB-AE59-752DA6AD78E7.html](https://pubs.vmware.com/vsphere-50/index.jsp?topic=%2Fcom.vmware.vsphere.avail.doc_50%2FGUID-62B80D7A-C764-40CB-AE59-752DA6AD78E7.html)

---

### QUESTION 8

Which two conditions would prevent an administrator from upgrading an existing vCenter Appliance to vSphere 6.x? (Choose two.)

- A. The appliance has been configured to use an external Single Sign-On server.
- B. The administrator did not export the appliance configuration.
- C. The administrator is using an appliance with an embedded Platform Services Controller.
- D. The ESXi Host that the appliance will run on has not been placed into Maintenance Mode.

Correct Answer: AB

---

### QUESTION 9

An administrator is planning a vSphere infrastructure with the following specific networking requirements:

The ability to shape inbound (RX) traffic

Support for Private VLANs (PVLANS)

Support for LLDP (Link Layer Discovery Protocol)

What is the minimum vSphere Edition that will support these requirements?

- A. vSphere Essentials Plus
- B. vSphere Standard
- C. vSphere Enterprise
- D. vSphere Enterprise Plus

Correct Answer: D

Reference:

[http://kb.vmware.com/selfservice/microsites/search.do?language=en\\_US&cmd=displayKCSearchArticle&externalId=1010555](http://kb.vmware.com/selfservice/microsites/search.do?language=en_US&cmd=displayKCSearchArticle&externalId=1010555)

---

### QUESTION 10

Refer to the Exhibit.

#### Rule-Set 1

Select rules to create your VM storage policy.

- The VM storage policy will match datastores that satisfy any of the rule sets.
- A rule set will match datastores that satisfy all of the selected rules.

#### Rules based on common capabilities

<Add capability>

#### Rules based on vendor-specific capabilities

VSAN

Number of failures to tolerate 2

Number of disk stripes per object 3

<Add capability>

#### Rules based on tags

Add tag-based rule...

#### Storage Consumption Model

A virtual disk with size 100 GB would consume:

Storage space  
300.00 GB  
Initially reserved storage space  
0.00 B  
Reserved flash space  
0.00 B

A Storage Policy for a Virtual SAN is set to the default policy, as shown in the Exhibit. Which change would reduce the storage consumption by one third?

- A. Number of failures to tolerate = 1
- B. Number of disk stripes per object = 2
- C. Number of failures to tolerate = 3
- D. Number of disk stripes per object = 1

Correct Answer: A

Number of failures to tolerate defines the number of host, disk, or network failures a virtual machine object can tolerate. For  $n$  failures tolerated,  $n+1$  copies of the virtual machine object are created and  $2n+1$  hosts with storage are required. Default value is 1. Maximum value is 3.

Reference: <http://pubs.vmware.com/vsphere-55/index.jsp?topic=%2Fcom.vmware.vsphere.storage.doc%2FGUID-C8E919D0-9D80-4AE1-826B-D180632775F3.html>

#### QUESTION 11

An administrator is troubleshooting a virtual machine performance issue using vRealize Operations. Which two badges would help to identify possible resource contention concerns? (Choose two.)

- A. Health > Workload
- B. Health > Faults

C. Risk > Time Remaining

D. Risk > Stress

Correct Answer: AD

Reference: [https://www.vmware.com/files/pdf/vsphere/vSOM6- vRealizeOperationsManager-EvaluationGuide.pdf](https://www.vmware.com/files/pdf/vsphere/vSOM6-vRealizeOperationsManager-EvaluationGuide.pdf)

---

## QUESTION 12

An administrator wants to provide users restricted access. The users should only be able to perform the following tasks:

Create and consolidate virtual machine snapshots Add/Remove virtual disks Snapshot Management

Which default role in vCenter Server would meet the administrator's requirements for the users?

A. Virtual machine user

B. Virtual machine power user

C. Virtual Datacenter administrator

D. VMware Consolidated Backup user

Correct Answer: B

Virtual Machine Power User is a sample role that grants a user access rights only to virtual machines; can alter the virtual hardware or create snapshots of the VM. Reference: <http://blog.pluralsight.com/vmware-access-control-101-roles-andpermissions>