

**100%** Money Back  
**Guarantee**

**Vendor:**VMware

**Exam Code:**3V0-732

**Exam Name:**VMware Certified Advanced Professional  
7 - Cloud Management and Automation Design Exam

**Version:**Demo

### QUESTION 1

The Human Resources (HR) team would like its members to be able to manage and delete Active Directory user accounts in vRealize Automation while protecting against accidental user account deletion. In which two ways could this be accomplished? (Choose two.)

- A. Create an Approval Policy for '\\Service Catalog - Catalog Item Request\\' requiring that HR managers authorize the deletion action.
- B. Create an Approval Policy for '\\Service Catalog - Resource Action Request\\' requiring that HR managers authorize the deletion action.
- C. Create an Event Broker subscription to notify HR managers and prevent the deletion from occurring.
- D. Create an Event Broker subscription to notify HR managers and move the account into an archive OU.

Correct Answer: AB

---

### QUESTION 2

An architect is tasked with designing a multi-region Software Defined Data Center (SDDC) deployment. The operations team has mandated that the solution enable real-time logging for all automation components. The architect makes a design decision to use a vRealize Log Insight cluster in each region, consisting of a total of three nodes. Which three data sources are required to be in scope? (Choose three.)

- A. vRealize Automation Appliance
- B. NSX Manager, NSX Controller instances and NSX Edge instances
- C. vRealize Operations Manager
- D. vRealize Orchestrator
- E. vRealize IaaS Server

Correct Answer: ABC

---

### QUESTION 3

A company uses a single - forest, multiple-domain Active Directory environment. It would like a seamless authentication experience to vRealize Automation for its end users. Which two design specifications are required to meet this need? (Choose two.)

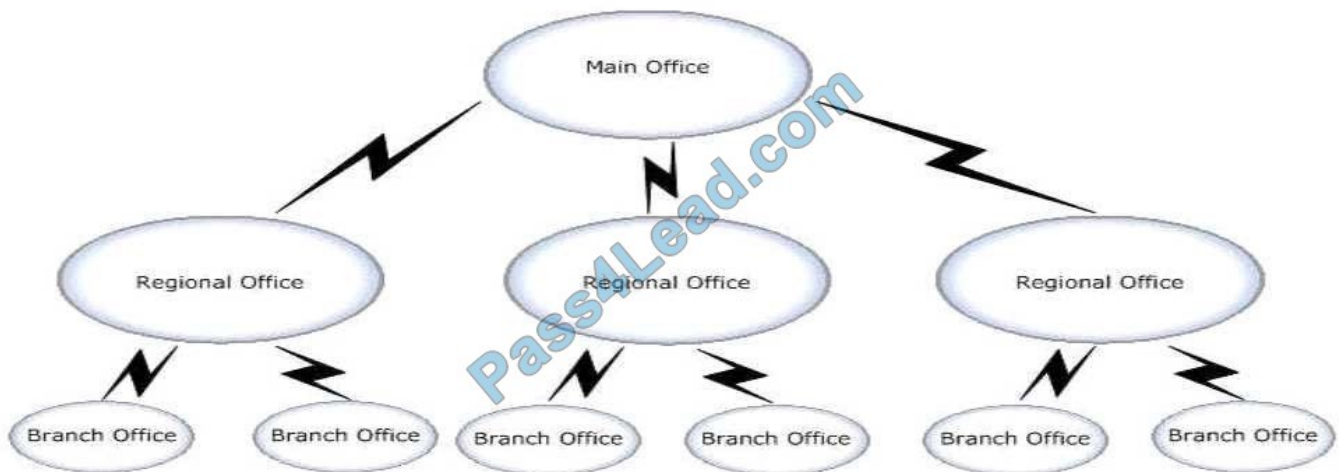
- A. Active Directory with Integrated Windows Authentication must be selected as the Directory Service connection option.
- B. The built-in vRA local user ConfigurationAdmin must be moved to Active Directory before configuration.
- C. Active Directory over LDAP must be selected as the Directory Service connection option.
- D. The vRealize Automation appliances must be joined to the Active Directory domain.

Correct Answer: CD

---

#### QUESTION 4

A company has a main office, three regional offices, and six branches offices. The network links are configured as shown in the exhibit. View the Exhibit:



During information gathering, an architect records: The regional offices are located in secure bunkers. The CTO feels this would be a good location for all the vRealize Automation components to meet their BC/DR objectives. However, the CTO is looking for the best design while maintaining their very high security requirements. The branch offices are located in very remote locations with unpredictable network performance. Reliance on the main and regional offices needs to be minimal while still allowing provisioning of machines in the branch offices. The branch offices consist of three host vSphere clusters. There is synchronous vSphere Metro Storage Cluster (vMSC) between the regional offices as well as replicated backups between the regional offices with replication running nightly. The CEO wants to have the lowest possible RPO and RTO of the vRealize portal including the ability to manage already provisioned machines while NOT increasing the amount of data being replicated between the regional offices as much as possible. Referring to the exhibit, which two design specifications can the architect recommend to meet requirements? (Choose two.)

- A. distributed vRealize Automation management solution in the main office
- B. vSphere agents in each of the branch offices
- C. distributed vRealize Automation management solution in each of the regional offices
- D. distributed vRealize Automation management solution across the regional offices
- E. vSphere agents in the regional offices that manage the regional and branch offices

Correct Answer: DE

---

#### QUESTION 5

A large banking customer is in the process of designing and deploying vRealize Automation for its production environment.

1.

The Cloud Operations team has indicated its concerns with supporting a large, multi-component deployment with its traditional toolsets.

2.

The team must be notified when any of the components stop or fail.

3.

They have also mandated that the solution be easy to deploy and configure, support high-availability and NOT require support from any other operations teams.

Which are two design constraints in this scenario? {Choose two.}

A. There are existing DNS and NTP servers.

B. There may be insufficient capacity.

C. No further ESXi hosts can be added.

D. The existing IP address management system must be used.

Correct Answer: CD

---

## QUESTION 6

An architect for a vRealize Automation (vRA) deployment project has met with the IT team and gathered the following requirements:

1.

Automated 30-day power off and archive

2.

Keep costs as low as possible

3.

Utilize built-in functionality

4.

One click storage provisioning

5.

API calls to vRA and NSX

6.

Custom Portal

To which infrastructure quality does the One-click storage provisioning technical requirement map?

- A. Security
- B. Recoverability
- C. Performance
- D. Manageability
- E. Availability

Correct Answer: D

---

### QUESTION 7

A cloud architect is tasked with designing a vSphere-based private cloud multi- machine blueprint solution for an organization's complex application consisting of multiple virtual machines (VMs) and a container. During requirements gathering, the following requirements are identified:

1.

The application, which runs in a container, should be able to access the internet and update an existing internal database.

2.

Provisioned VMs should NOT have access to the internet or external database.

3.

A third- party Configuration Management (CM) tool should be used for multi- machine automation.

4.

Before integration with the CM tool container, the application should start and update the existing internal database.

5.

Any information received from the container VM should be available before the CM tool agent is installed.

Which is the best CM tool integration design recommendation for this scenario?

- A. vRealize Automation external custom properties and CloudClient
- B. vRealize Automation blueprint with software components
- C. Virtual Machine template with pre-installed CM agent
- D. vRealize Orchestrator workflow at POST Machine Provisioned Event Broker state

Correct Answer: D

---

### QUESTION 8

A bank has requested assistance with developing a backup design for its vRealize Automation platform. They would like system backups to be crash-consistent in the event of an outage. What are three guidelines that should be followed when planning these backups? (Choose three.)

- A. Minimize the number of active transactions before beginning a backup. Plan a regular backup for when the system is least active.
- B. For non-virtual workloads, back up installation directories as required.
- C. When backing up the complete system, back up all instances of the vRealize Automation appliance and databases as close to each other as possible, preferably within seconds.
- D. Create a backup of instances of the vRealize Automation appliance and the IaaS components when updating certificates.
- E. When backing up the complete system, back up all instances of the vRealize Automation appliance one at a time to preserve availability.

Correct Answer: ACD

Reference: <https://pubs.vmware.com/vrealize-suite-60/index.jsp?topic=%2Fcom.vmware.vrsuite6.0.backuprestore.doc%2FGUID-0A3155DA-F2FF-4756-8F97-2F45BAEB5287.html>

---

#### QUESTION 9

A company's workload deployments from its VMware vRealize Automation environment have sustained a significant increase. Management has instituted a new SLA requirement for the deployment environment to guarantee availability to consumers.

Which three design recommendations will address the requirements of this scenario? (Choose three.)

- A. Deploy two Distributed Execution Manager (DEM) worker instances in the primary datacenter.
- B. Deploy one or more additional vRealize Automation appliances.
- C. Migrate a vRealize Orchestrator internal instance to a clustered external instance.
- D. Incorporate a load balancing solution.
- E. Migrate an internal vPostgres database to a clustered external instance.

Correct Answer: ABD

---

#### QUESTION 10

IT Services would like to automate the allocation of software applications. The company uses a modern virtual desktop platform with software management capabilities, and the platform supports interoperability via a REST API. The following requirements have been established for this project:

1.

Business users will use a self-service portal to request software added to their existing system.

2.

The requestor may select one or more software applications from a list during the request.

3.

The software application list must be up-to-date.

4.

The virtual desktop team will provide REST API calls needed to interface with the existing platform.

Which three of these listed elements are required for this scenario? (Choose three.)

A. Customization of XaaS form

B. vRealize Orchestrator workflow with script action

C. Resource mapping

D. Resource action

E. External value definition

Correct Answer: BCD

---

#### QUESTION 11

An architect for a vRealize Automation (vRA) deployment project has met with the IT team and gathered the following requirements:

1.

Automated 30-day power off and archive

2.

99.99% SLA of the custom portal

3.

Utilize built-in functionality

4.

HIPAA Compliance

5.

API calls to vRA and NSX

6.

Custom Portal

To which infrastructure quality does the 99.99% SLA of the custom portal technical requirement map?

- A. Manageability
- B. Performance
- C. Security
- D. Availability

Correct Answer: D

---

#### **QUESTION 12**

A company is developing its storage-as-a-service solution using vRealize Automation. It has created a security group that will be assigned to the engineers developing this solution. Following the principle of least privilege, which role should be associated with this security group?

- A. XaaS architect
- B. Catalog administrator
- C. Infrastructure architect
- D. Application architect
- E. Tenant administrator

Correct Answer: D



To Read the [Whole Q&As](#), please purchase the [Complete Version](#) from [Our website](#).

## Try our product !

**100%** Guaranteed Success

**100%** Money Back Guarantee

**365** Days Free Update

**Instant Download** After Purchase

**24x7** Customer Support

Average **99.9%** Success Rate

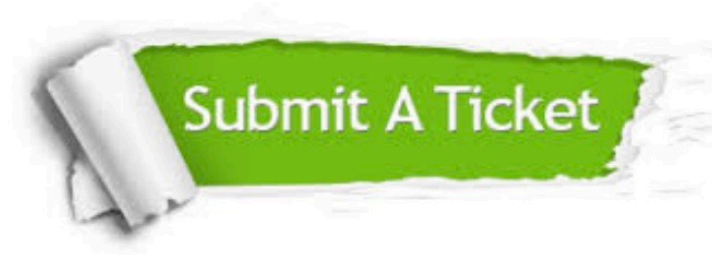
More than **800,000** Satisfied Customers Worldwide

Multi-Platform capabilities - **Windows, Mac, Android, iPhone, iPod, iPad, Kindle**

## Need Help

Please provide as much detail as possible so we can best assist you.

To update a previously submitted ticket:



 <p><b>One Year Free Update</b> Free update is available within One Year after your purchase. After One Year, you will get 50% discounts for updating. And we are proud to boast a 24/7 efficient Customer Support system via Email.</p>	 <p><b>Money Back Guarantee</b> To ensure that you are spending on quality products, we provide 100% money back guarantee for 30 days from the date of purchase.</p>	 <p><b>Security &amp; Privacy</b> We respect customer privacy. We use McAfee's security service to provide you with utmost security for your personal information &amp; peace of mind.</p>
---	---	--

Any charges made through this site will appear as Global Simulators Limited.

All trademarks are the property of their respective owners.