

100% Money Back
Guarantee

Vendor: Alcatel-Lucent

Exam Code: 4A0-100

Exam Name: Alcatel-Lucent Scalable IP Networks

Version: Demo

QUESTION 1

You are configuring your Alcatel-Lucent 7750SR Service Router from the Command Line Interface (CLI), and after entering a lengthy command, wish to return directly to the ROOT context. Which control command allows you to do this quickly?

- A. Ctrl-z
- B. Ctrl-c
- C. Esc
- D. Shift-Page Down

Correct Answer: A

QUESTION 2

Which of the following best describes a repeater?

- A. A passive device simply used to connect two or more cables. Does not generate or amplify any signals.
- B. A device that receives and retransmits a signal out its ports, but does not do any Layer 2 analysis of the data.
- C. A device that receives a signal and based on the Layer 2 destination address, makes a decision on which ports the signal should be retransmitted.
- D. A device that receives a signal and based on the Layer 3 destination address, makes a decision on which ports the signal should be retransmitted.

Correct Answer: B

QUESTION 3

How do protocols such as ATM and Frame-Relay support differentiating multiple customers or traffic types on the same physical wire?

- A. ATM and Frame-Relay are circuit switched protocols and use Virtual Circuits to create logical separation of traffic.
- B. ATM and Frame-Relay are point-to-point protocols and do not support different customers or traffic type on the same physical wire.
- C. ATM and Frame-Relay are circuit switched protocols and use VLAN's to create logical separation of traffic.
- D. ATM and Frame-Relay are circuit switched protocols and use IP Header information to create logical separation of traffic.

Correct Answer: A

QUESTION 4

Which of the following is a feature of Layer 3?

- A. Provides an universal addressing scheme
- B. Ensures data is delivered across the Layer 2 network.
- C. Provides reliable data transfers.
- D. Provides a physical interface to the network.

Correct Answer: A

QUESTION 5

The 201.148.26.0/24 network is subnetted using a /26 mask. How many subnets and host addresses will you obtain with this mask?

- A. 4 subnets, 64 hosts
- B. 64 subnets, 4 hosts

- C. 4 subnets, 62 hosts
- D. 64 subnets, 2 hosts
- E. 6 subnets, 30 hosts

Correct Answer: C

QUESTION 6

What kind of information can a Dynamic Host Configuration Protocol (DHCP) client receive?

- A. Details of the configuration settings of each router on the network.
- B. A list of other DHCP clients.
- C. IP addresses and their lease times.
- D. Server time information

Correct Answer: C

QUESTION 7

Choose two true statements that characterize Link State Routing

- A. Routers send a copy of their routing table to their neighbors periodically.
- B. Routers flood link information throughout the entire area.
- C. Network converges quickly (within several seconds) after a topology change.
- D. Routers do not have precise knowledge of the entire network topology.

Correct Answer: BC

QUESTION 8

Which statement accurately explains the purpose of the TCP protocol and what it provides?

- A. The primary purpose of TCP is to provide reliable communications between application services.
- B. The primary purpose of TCP is to provide unreliable communications between application services
- C. The primary purpose of TCP is to provide IP routing between application services.
- D. The primary purpose of TCP is to define the correct format for the application layer such as JPEG or HTML.

Correct Answer: A

QUESTION 9

Which of the following is the best description of well known ports?

- A. Well known ports apply to routers only and are used for communication and control traffic. Well known port numbers are assigned by IANA and can have any value.
- B. Well known ports are used by TCP and UDP. Well known port numbers range from 1024 to 65535 and are assigned by IANA.
- C. Well known port numbers are used by both TCP and UDP. Well known port numbers range from 1 to 1023 and are assigned by IANA.
- D. Well known ports numbers are used by TCP only. Well known port numbers are assigned by IANA and can have any value.

Correct Answer: C

QUESTION 10

Which organization first considered cross-platform networking support to be a necessity?

- A. IBM.
- B. US Military.
- C. Alcatel-Lucent.

- D. NASA.
- E. Bell Labs

Correct Answer: B

QUESTION 11

Which of the following statements best describes ARPANET?

- A. ARPANET was an early packet switched network initially connecting 4 sites (Stanford, UC Santa Barbara, UCLA, and U of Utah).
- B. The mission of ARPANET was to connect packet switched networks and other diverse networks, making an international network of networks.
- C. ARPANET connected sites spread around the Hawaiian Islands to a central time-sharing computer on the University of Hawaii campus.
- D. ARPANET was based on the use of TCP/IP to interconnect diverse systems.

Correct Answer: A

QUESTION 12

Kahn solved the problem of interconnecting different networks using different protocols by pioneering a new protocol called TCP that was capable of:

- A. Secure transmission of information.
- B. Enforcing a constant packet size to avoid discards.
- C. Allowing remote logins.
- D. Providing host to host connectivity with global addressing.

Correct Answer: D

QUESTION 13

Which network was created to replace ARPANET?

- A. INWG
- B. ALOHANET
- C. IETF
- D. NSFNET

Correct Answer: D

QUESTION 14

Which statement best describes how the internet evolved?

- A. The internet emerged in the commercial world in the 1980's following the US military's adoption of TCP/IP in 1983.
- B. The internet evolved from a military to a research to a commercial based network.
- C. The internet remained primarily a research based network and was only commercially adopted in 2000 when the world wide web was conceived.
- D. Internet service providers provided the services necessary for military based networks to evolve into research and education based networks.

Correct Answer: B

QUESTION 15

Which organization eventually became the standards body for IP and related protocols?

- A. IEEE
- B. IETF
- C. NSFNET

- D. ITU-T
- E. APNIC

Correct Answer: B

QUESTION 16

What is the name for an organization that provides Internet services to its customers?

- A. A large corporation.
- B. An ISP.
- C. A home based business.
- D. A content provider.

Correct Answer: B

QUESTION 17

The IANA is responsible for:

- A. Intra-city ISP traffic
- B. Allocation of the global IP address space
- C. Allocating IP addresses for residential customer traffic
- D. Allocating North American IP addresses

Correct Answer: B

QUESTION 18

Which of the following is an important advantage of protocol layering? (Choose two)

- A. Controls distribution of IP addresses.
- B. Simplifies protocol functionality.
- C. Isolates changes in lower layers from upper layers.
- D. Increases protocol operational efficiencies.
- E. Layering adds to the fragmentation of the data

Correct Answer: CD

QUESTION 19

To transmit its segments of data across the network TCP uses the services of which layer?

- A. Application Layer.
- B. Transport Layer.
- C. IP Layer.
- D. Data Link Layer

Correct Answer: C

QUESTION 20

Which of the following are protocols belonging to the OSI suite of protocols? (Choose two)

- A. OSPF
- B. BGP
- C. X.500
- D. IS-IS
- E. Ethernet

Correct Answer: CD

QUESTION 21

Which of the following statements is TRUE regarding the development of the OSI Reference Model?

- A. OSI was developed as an alternative, open standard to IBMs SNA model.
- B. OSI protocols were no longer used after TCP/IP was developed.
- C. OSI model is much simpler than TCP/IP.
- D. OSI model is maintained exclusively by the IETF.

Correct Answer: A

QUESTION 22

The TCP/IP and OSI models of protocol are similar in that they both have:

- A. An application and session layer.
- B. A network layer that provides a universal and consistent forwarding service.
- C. A transport layer with two protocols.
- D. An applications services layer with similar layering and service definitions.

Correct Answer: C

QUESTION 23

How many of the front access card slots of the Alcatel-Lucent 7750 SR-12 router are dedicated for redundant common equipment?

- A. 1
- B. 2
- C. 7
- D. 10

Correct Answer: B

QUESTION 24

Which of the following is not supported on the Alcatel-Lucent 7450 ESS?

- A. Support for IPv6.
- B. Support for POS.
- C. Upgrade path to the Alcatel-Lucent 7750 SR.
- D. Support for IS-IS

Correct Answer: C

QUESTION 25

The TiMOS-m.n.Y.Z software image file is software that:

- A. Contains all the components required to configure and run protocols on the Alcatel-Lucent 7750 SR/7450 ESS.
- B. Loads the router configuration.
- C. Transfers the router configuration from the router to the network management system.
- D. Loads the router software image.

Correct Answer: A

QUESTION 26

When entering a command on the Alcatel-Lucent 7750 SR from the Command Line Interface (CLI), what would you use to list all the options for the command?

- A. ?

- B. tab character
- C. space character
- D. info

Correct Answer: A

QUESTION 27

Which of the following describes the Alcatel-Lucent 7750 SR Input/Output Module (IOM)?

- A. Small optical module available in a variety of formats.
- B. Contains a CPU for managing the forwarding hardware in each flexible fast path.
- C. Converts traffic from an external standard format to an internal format.
- D. Contains the CPU that runs the routing protocol software as well as the switch fabric.

Correct Answer: B

QUESTION 28

A typical Alcatel-Lucent 7750 SR Media Dependent Adapter (MDA) interfaces with:

- A. A Small Form-Factor Pluggable (SFP) module.
- B. The Central Processing Unit (CPU).
- C. The Control Plane.
- D. The Switch Fabric.

Correct Answer: A

QUESTION 29

Which of the following best describes the operation of the Media Dependent Adapter (MDA)?

- A. The MDA contains the flexible fast path complex used for forwarding data.
- B. Excess data is discarded by the MDA and the remaining data forwarded for QoS processing.
- C. The MDA buffers data and applies Quality of Service (QoS) to classify and treat the data appropriately.
- D. The MDA converts data from its incoming physical format into an internal format and provides some minimal buffering.

Correct Answer: D

QUESTION 30

What is NOT a function of the IOM?

- A. It forwards the data to the switch fabric.
- B. It discards excess data packets.
- C. It converts the incoming data to an internal format.
- D. It performs Quality of Service operations and buffers incoming data.

Correct Answer: C

QUESTION 31

Which compact flash on a Control/Switch processor of an Alcatel-Lucent 7750 router stores the runtime image and running configuration?

- A. CF 1
- B. CF 2
- C. CF 3
- D. Both A and B

Correct Answer: C

QUESTION 32

One of the tasks of the boot options file (BOF) is to:

- A. Specify authorization information to control access to the router.
- B. Define an IP address for the CPM Ethernet port.
- C. Initialize the hardware.
- D. Set the date/time for the system.

Correct Answer: B

QUESTION 33

Which of the following user interface sessions are accessible through Telnet and Secure Shell (SSH) on the Alcatel-Lucent 7750 SR and 7450 ESS?

- A. Graphic User Interface (GUI).
- B. Node Management Terminal Interface (NMTI).
- C. Command Line Interface (CLI).
- D. All of the above.

Correct Answer: C

QUESTION 34

You are working from a particular Command Line Interface (CLI) context, and want to see the commands available from your current context. What command can you issue to view this information?

- A. view tree
- B. tree
- C. info detail
- D. info

Correct Answer: B

QUESTION 35

What is available for auto completion of commands within the CLI on the Alcatel-Lucent 7750 SR Service Router?

- A. Type the first letters of the command, then press Ctrl C
- B. Type the first letters of the command, then press Esc
- C. Type the first letters of the command, then press Tab
- D. Type the first letters of the command, then type ?

Correct Answer: C

QUESTION 36

Which of the following is a File command in the File System context of the Command Line Interface (CLI)?

- A. time-display
- B. help
- C. type
- D. terminal

Correct Answer: C

QUESTION 37

What must occur for a LAG to become operational?

- A. There must be multiple ports assigned to the LAG.

- B. All ports in the LAG must be configured with the same characteristics.
- C. Auto-negotiation must be enabled on all ports in the LAG.
- D. All of the above.

Correct Answer: B

QUESTION 38

If a 4-port LAG is configured with the option of 'port-threshold 2' and 'action down' what will happen if the total operational links in the LAG is 2?

- A. If dynamic-cost is enabled it will adjust the cost for routing protocols such as OSPF.
- B. If dynamic-cost is not enabled it will adjust the cost for routing protocols such as OSPF by dividing the link bandwidth by 2.
- C. The LAG will be changed to an operational state of 'down'.
- D. The LAG will function with only 2 ports. There will be no change to the routing metric.

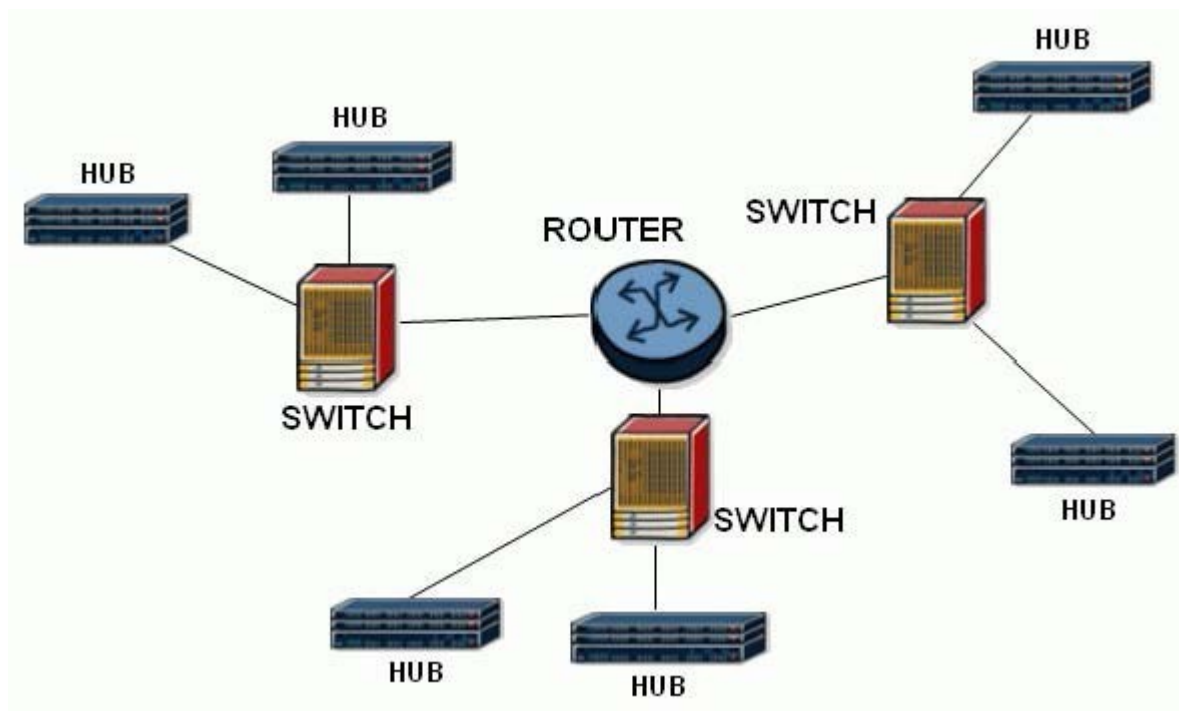
Correct Answer: C

QUESTION 39

Click the Exhibit Button below:

An Ethernet Local Area Network (LAN) consists of the components shown in the diagram below:

How many broadcast and collision domains are on this LAN?



- A. 9 broadcast domains, 3 collision domains.
- B. 3 broadcast domains, 3 collision domains.
- C. 3 broadcast domains, 9 collision domains.
- D. 1 broadcast domain, 9 collision domains.

Correct Answer: C

QUESTION 40

As described by the CSMA/CD algorithm, what is the first thing to happen when Host A and Host B begin transmitting data at the same time?

- A. Host A and B will generate a jam signal.
- B. Listening hosts will request retransmission.
- C. Host A or B will retry the transmission.
- D. A back-off timer is started by Host A or B.

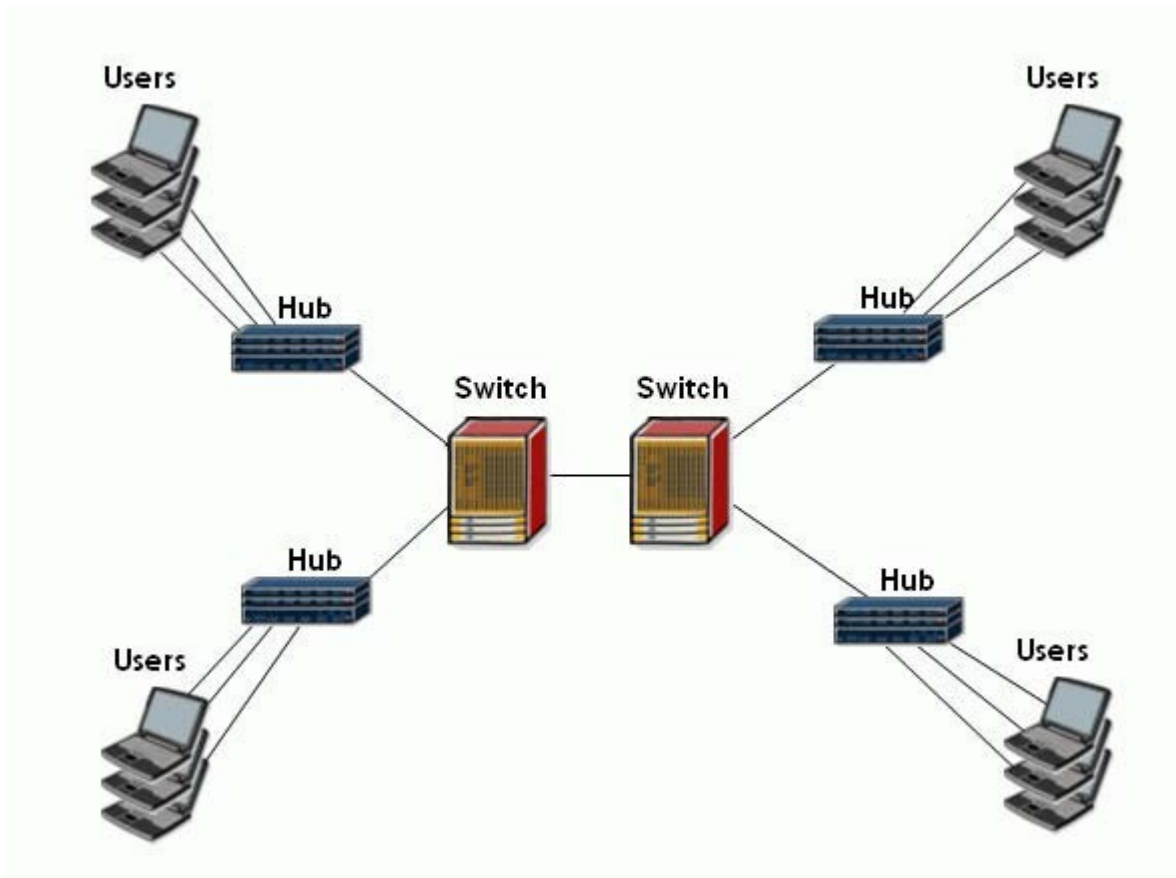
Correct Answer: A

QUESTION 41

(Click the Exhibit Button below) An Ethernet Local Area Network (LAN) consists of the following components:

Four 24-port hubs & Two 16-port switches

How many broadcast domains are on this LAN?



- A. 1
- B. 2
- C. 5
- D. 32

Correct Answer: A

QUESTION 42

Which of the following best describes an Ethernet bridge?

- A. A passive device simply used to connect two or more cables. Does not generate or amplify any signals.
- B. A device that receives and retransmits a signal out its other ports, but does not do any Layer 2 analysis of the data.
- C. A device that receives a signal and based on the Layer 2 destination address, makes a decision on which ports the signal should be retransmitted.

- D. A device that receives a signal and based on the Layer 3 destination address, makes a decision on which ports the signal should be retransmitted.

Correct Answer: C

QUESTION 43

What happens immediately after an Ethernet switch receives an Ethernet frame?

- A. It records the destination MAC address and the interface on which it arrived.
- B. It records the source MAC address and the interface on which it arrived.
- C. It floods the frame out of all its interfaces except the interface on which the frame arrived.
- D. It transmits the frame out of the appropriate interface.

Correct Answer: B

QUESTION 44

What is the behavior of a typical Ethernet switch when it receives a frame with a unicast destination MAC address? (Choose two)

- A. The switch floods the frame out of all ports except the port on which it was received.
- B. The switch looks in its FDB. If the source address is unknown it discards the frame.
- C. The switch looks in its FDB. If the destination address is known it forwards the frame out the appropriate interface.
- D. The switch looks in its FDB. If the destination address is unknown it floods the frame out all ports except the port on which it was received.
- E. The switch looks in its FDB. If the destination address is unknown it discards the frame.

Correct Answer: CD

QUESTION 45

Which technologies can be used with Ethernet switches to achieve redundancy? (Choose two)

- A. LAG
- B. OSPF
- C. RIP
- D. STP

Correct Answer: AD

QUESTION 46

In what type of network is a broadcast storm likely to occur?

- A. An Ethernet network with redundant paths not running STP.
- B. An ATM network.
- C. A SONET network.
- D. All of the above.

Correct Answer: A

QUESTION 47

What problems was Spanning Tree Protocol (STP) primarily designed to solve? (Choose two):

- A. Providing path redundancy.
- B. Preventing loops.
- C. Handling collisions.
- D. Allowing flooding of multicast traffic.

Correct Answer: AB

To Read the [Whole Q&As](#), please purchase the [Complete Version](#) from [Our website](#).

Trying our product !



- ★ **100%** Guaranteed Success
- ★ **100%** Money Back Guarantee
- ★ **365 Days** Free Update
- ★ **Instant Download** After Purchase
- ★ **24x7** Customer Support
- ★ Average **99.9%** Success Rate
- ★ More than **69,000** Satisfied Customers Worldwide
- ★ Multi-Platform capabilities - **Windows, Mac, Android, iPhone, iPod, iPad, Kindle**

Need Help

Please provide as much detail as possible so we can best assist you.

To update a previously submitted ticket:



 One Year Free Update <p>Free update is available within One Year after your purchase. After One Year, you will get 50% discounts for updating. And we are proud to boast a 24/7 efficient Customer Support system via Email.</p>	 Money Back Guarantee <p>To ensure that you are spending on quality products, we provide 100% money back guarantee for 30 days from the date of purchase.</p>	 Security & Privacy <p>We respect customer privacy. We use McAfee's security service to provide you with utmost security for your personal information & peace of mind.</p>
---	---	--

[Guarantee & Policy](#) | [Privacy & Policy](#) | [Terms & Conditions](#)

Any charges made through this site will appear as Global Simulators Limited.

All trademarks are the property of their respective owners.

Copyright © 2004-2015, All Rights Reserved.