

100% Money Back
Guarantee

Vendor: Cisco

Exam Code: 642-997

Exam Name: Implementing Cisco Data Center Unified
Fabric (DCUFI)

Version: Demo

DEMO

QUESTION 1

In policy-based routing, which action is taken for packets that do not match any of the route-map statements?

- A. forwarded after the egress queue empties on the outbound interface
- B. forwarded using the last statement in the route map
- C. forwarded using the closest matching route-map statement
- D. forwarded using destination-based routing

Correct Answer: D

QUESTION 2

Refer to the exhibit.

```
OTV_EDGE1_SITE#1 show otv route
OTV Unicast MAC Routing Table For Overlay1

VLAN MAC-Address          Metric Uptime   Last Updt   Owner
  Next-Hop(s)
!100 MACs from SITE 1 - local
110 0000.6e01.010a 1      2d16h          2d16h       lmac
  port-channel1

!100 MACs from SITE 2
110 0000.6e02.020a 42 2d16h          2d16h       isis_otv-default
  Overlay1-10.3.8.2

OTV_EDGE1_SITE#1 show otv route
OTV Unicast MAC Routing Table For Overlay1

VLAN MAC-Address          Metric Uptime   Last Updt   Owner
  Next-Hop(s)
!100 MACs from SITE 1 - local
110 0000.6e01.010a 1      3d16h          3d16h       lmac
  port-channel1
110 0000.6e02.020a 1      0d01h          0d01h       lmac
  port-channel2

!100 MACs from SITE 2
```

Which statement based on these two outputs that were collected 24 hours apart is true?

- A. The Site 2 OTV edge device has gone down.
- B. The MAC address cannot be discovered on two separate port channel interfaces.
- C. The MAC address that ends in 020a moved to the local site 23 hours ago.
- D. The Overlay1 IP address should be a multicast IP address.

Correct Answer: C

QUESTION 3

Which three selections represent implementations of Cisco VN-Link technology? (Choose three.)

- A. Cisco Nexus 1000V
- B. Cisco Nexus 2000 FEX
- C. Cisco VM-FEX
- D. VMware PTS
- E. vMotion

Correct Answer: ACD

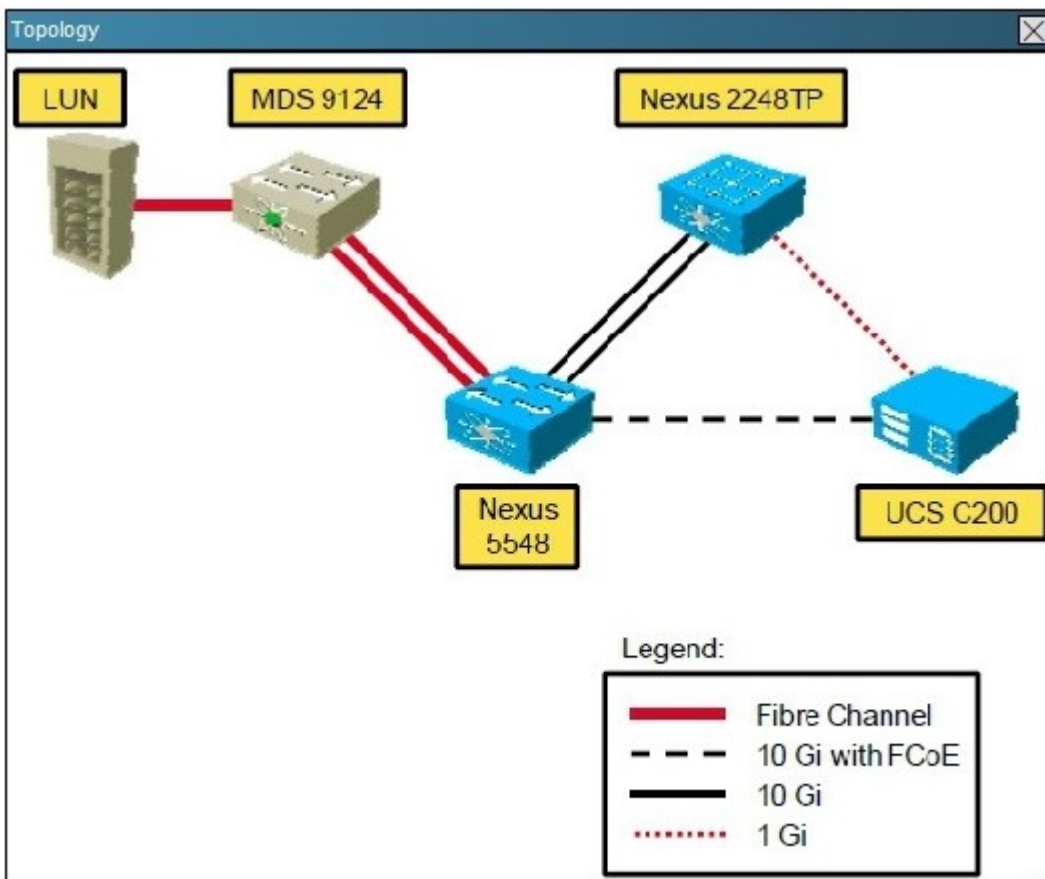
QUESTION 4

Instructions

- THIS TASK DOES NOT REQUIRE DEVICE CONFIGURATION.
- Click Cisco Nexus 5548 to gain console access. No console or enable passwords are required.
- To access the multiple-choice questions, click the numbered boxes on the left of the top panel.
- There are four multiple-choice questions with this task.

Scenario

Customer is deploying Cisco Nexus 5548 switch with FCoE in their new data center, as shown in the topology diagram. Click Nexus5548 icon to run show commands and answer the questions.





When configuring FCoE VLANs and Virtual Fiber Channel (vFC) Interfaces, what guidelines must be followed?

- A. Each vFC interface must be bound to an FCoE-enabled Ethernet or EtherChannel interface or to the MAC address of a remotely connected adapter
- B. Each FC interface must be bound to an FCoE-enabled Ethernet or EtherChannel interface or to the MAC address of a remotely connected adapter
- C. Each vFC interface must be bound to an FC enabled Ethernet or EtherChannel interface or to the MAC address of a remotely connected adapter
- D. Each vFC interface must be bound to an FCoE-enabled vFC or EtherChannel interface or to the MAC address of a remotely connected adapter

Correct Answer: A

QUESTION 5

Which two actions are required before FIPS is configured in Cisco MDS? (Choose two.)

- A. Passwords must be a minimum of 10 characters in length.
- B. SNMP v2 or v3 must be enabled.
- C. Remote authentication must occur utilizing RADIUS/TACACS+.
- D. Disable VRRP.
- E. Delete all SSH server RSA key pairs.
- F. Delete all IKE policies utilizing MD5 or DES for encryption.
- G. Enable the FC-FIPS feature.
- H. Disable SSH.

Correct Answer: DF

QUESTION 6

When creating a VDC on a Cisco Nexus 7000 switch, which command in the VDC designates that only 10 port channels can be created in that VDC?

- A. allocate resource port-channel 10

- B. limit-resource port-channel minimum 0 maximum 10
- C. allow-resource port-channel maximum 10
- D. port-channel maximum 10

Correct Answer: B

QUESTION 7

Which parameter is configurable when setting up logging on the Connectivity Management Processor?

- A. the number of CMP messages to save in a single log file
- B. the number of times the log can roll over
- C. the directory to save the log file to
- D. the severity threshold of the messages to log

Correct Answer: D

QUESTION 8

Which command specifies a load-balancing method based on the MAC address of a host where the same forwarder is always used for a particular host while the number of GLBP group members remains unchanged?

- A. load-balancing host-dependent
- B. load-balancing mac-pinning
- C. load-balancing round-robin
- D. load-balancing weighted

Correct Answer: A

QUESTION 9

Which two statements about SAN zoning on Cisco Nexus switches are true? (Choose two.)

- A. Zoning is enforced by examining the destination ID field.
- B. Devices can only belong to one zone.
- C. Only one zone set can be activated at any time.
- D. A zone can only be a member one zone set.
- E. Zoning must be administered from the primary SAN switch in the fabric.
- F. Zone configuration changes are nondisruptive.

Correct Answer: CF

QUESTION 10

Drag the description on the left to the most appropriate FCoE protocol or feature on the right.

Drag the description on the left to the most appropriate FCoE protocol or feature on the right.	
processes FLOGIs	ENodes
replaces lower Fibre Channel layers with unified fabric I/O	FIP
control plane protocol used to establish virtual links	FCF
Fibre Channel interfaces in the form of VN Ports	FCoE

Select and Place:

Drag the description on the left to the most appropriate FCoE protocol or feature on the right.

processes FLOGIs	ENodes
replaces lower Fibre Channel layers with unified fabric I/O	FIP
control plane protocol used to establish virtual links	FCF
Fibre Channel interfaces in the form of VN Ports	FCoE

Correct Answer:

Drag the description on the left to the most appropriate FCoE protocol or feature on the right.

	Fibre Channel interfaces in the form of VN Ports
	control plane protocol used to establish virtual links
	processes FLOGIs
	replaces lower Fibre Channel layers with unified fabric I/O

QUESTION 11

How is a dynamic vNIC allocated?

- A. Dynamic vNICs are assigned to VMs in vCenter.
- B. Dynamic vNICs can only be bound to the service profile through an updating template.
- C. Dynamic vNICs are bound directly to a service profile.
- D. Dynamic vNICs are assigned by binding a port profile to the service profile.

Correct Answer: C

QUESTION 12

A Cisco Nexus 2000 Series Fabric Extender is connected to two Cisco Nexus 5000 Series switches via a vPC link. After both Cisco Nexus 5000 Series switches lose power, only one switch is able to power back up. At this time, the Cisco Nexus 2000 Series Fabric Extender is not active and the vPC ports are unavailable to the network.

Which action will get the Cisco Nexus 2000 Series Fabric Extender active when only one Cisco Nexus 5000 Series switch is up and active?

- A. Move the line from the failed Cisco Nexus 5000 Series switch to the switch that is powered on, so the port channel forms automatically on the switch that is powered on.
- B. Shut down the peer link on the Cisco Nexus 5000 Series switch that is powered on.
- C. Configure reload restore or auto-recovery reload-delay on the Cisco Nexus 5000 Series switch that is powered on.
- D. Power off and on the Cisco Nexus 2000 Series Fabric Extender so that it can detect only one Cisco Nexus 5000 Series switch at power up.

Correct Answer: C

QUESTION 13

Which policy-map action performs congestion avoidance?

- A. priority
- B. bandwidth
- C. queue-limit
- D. random-detect

Correct Answer: D

QUESTION 14

Which two items are features that are available in VN-Link in software? (Choose two.)

- A. VM snapshot
- B. NetFlow
- C. ERSPAN
- D. high availability
- E. resource reservations

Correct Answer: BC

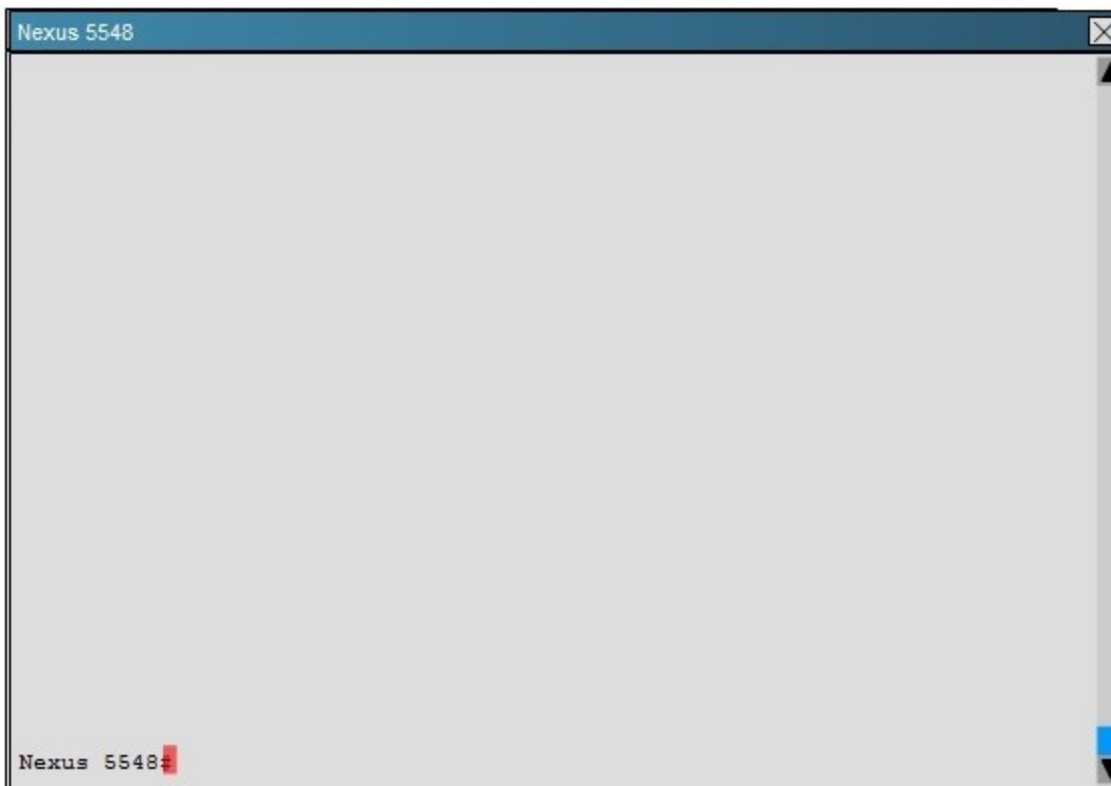
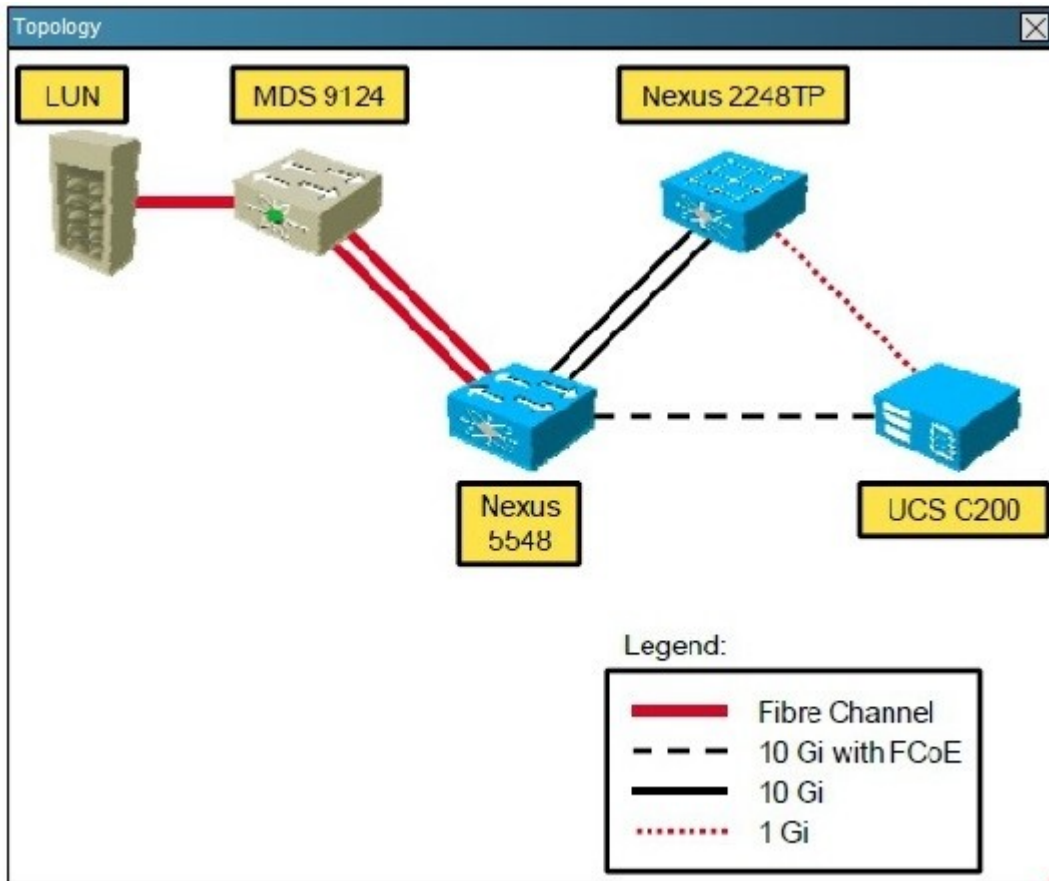
QUESTION 15

Instructions ✕

- THIS TASK DOES NOT REQUIRE DEVICE CONFIGURATION.
- Click Cisco Nexus 5548 to gain console access. No console or enable passwords are required.
- To access the multiple-choice questions, click the numbered boxes on the left of the top panel.
- There are four multiple-choice questions with this task.

Scenario ✕

Customer is deploying Cisco Nexus 5548 switch with FCoE in their new data center, as shown in the topology diagram. Click Nexus5548 icon to run show commands and answer the questions.



What is the status of FC interface associated with ethernet 1/5 indicate?

- A. Trunk VSAN 11 is isolated
- B. Interface vfc 5 is up and running for the assigned VSAN

- C. Trunk VSAN 11 is initializing
- D. VSAN to FC mapping is not working as expected

Correct Answer: B

QUESTION 16

Which statement about the MPLS feature set is true?

- A. It is not license dependent.
- B. It can be installed from any VDC.
- C. It can be enabled only in the default VDC.
- D. It must be installed from the default VDC.

Correct Answer: D

QUESTION 17

Which item represents the process that allows FCoE multihop using T11 standard FC-BB- 5?

- A. distributed FCF
- B. FIP proxy
- C. N Port proxy
- D. FIP snooping

Correct Answer: D

QUESTION 18

Which Cisco NX-OS feature allows transparent Layer 2 extension between sites?

- A. FabricPath
- B. ETV
- C. OTV
- D. vPC
- E. LISP
- F. TrustSec

Correct Answer: C

QUESTION 19

Which action limits the maximum number of routes that are allowed in the routing table?

- A. Use a filter BGP.
- B. Use only static routes.
- C. Use the maximum routes command inside address family.
- D. Use a route map to filter routes.

Correct Answer: C

QUESTION 20

Which four statements about reserved VLANs in Cisco NX-OS are true? (Choose four.)

- A. The range of reserved VLANs cannot be changed.
- B. The number of reserved VLANs is 96.
- C. A change to the range of reserved VLANs can be performed only in the VDC default.
- D. A write-erase procedure restores the default reserved VLAN range.
- E. The number of reserved VLANs is 128.
- F. A reload is needed for changes to take place.

G. The configuration must be saved for changes to take place.

Correct Answer: CEF G

To Read the [Whole Q&As](#), please purchase the [Complete Version](#) from [Our website](#).

Trying our product !




- ★ **100%** Guaranteed Success
- ★ **100%** Money Back Guarantee
- ★ **365 Days** Free Update
- ★ **Instant Download** After Purchase
- ★ **24x7** Customer Support
- ★ Average **99.9%** Success Rate
- ★ More than **69,000** Satisfied Customers Worldwide
- ★ Multi-Platform capabilities - **Windows, Mac, Android, iPhone, iPod, iPad, Kindle**

Need Help

Please provide as much detail as possible so we can best assist you.

To update a previously submitted ticket:



 One Year Free Update <p>Free update is available within One Year after your purchase. After One Year, you will get 50% discounts for updating. And we are proud to boast a 24/7 efficient Customer Support system via Email.</p>	 Money Back Guarantee <p>To ensure that you are spending on quality products, we provide 100% money back guarantee for 30 days from the date of purchase.</p>	 Security & Privacy <p>We respect customer privacy. We use McAfee's security service to provide you with utmost security for your personal information & peace of mind.</p>
---	---	--

[Guarantee & Policy](#) | [Privacy & Policy](#) | [Terms & Conditions](#)

Any charges made through this site will appear as Global Simulators Limited.

All trademarks are the property of their respective owners.

Copyright © 2004-2015, All Rights Reserved.