

**100%** Money Back  
**Guarantee**

**Vendor:**Microsoft

**Exam Code:**70-243

**Exam Name:**Administering and Deploying System  
Center 2012 Configuration Manager

**Version:**Demo

## QUESTION 1

Your network contains a System Center 2012 R2 Configuration Manager Service Pack 1 (SP1) environment."

You need to receive an email message every day that lists all non-compliant clients.

What should you do?

- A. Create an alert subscription.
- B. Configure a Microsoft SQL Server Reporting Services (SSRS) report.
- C. Configure an in-console alert.
- D. Create a ConfigMgr query.

Correct Answer: B

Custom reports are intended for advanced users who are comfortable creating their own reports by using Microsoft SQL Server Reporting Services and SQL Server Business Intelligence Development Studio.

Configuring a Report Server for E-Mail Delivery

Reporting Services includes an e-mail delivery extension so that you can distribute reports through e-mail.

Depending on how you define the e-mail subscription, a delivery might consist of a notification, link, attachment, or embedded report.

---

## QUESTION 2

Note: This question is part of a series of questions that use the same or similar answer choices. An answer choice may be correct for more than one question in the series. Each question is independent of the other questions in this series.

Information and details provided in a question apply only to that question.

Your network contains a System Center 2012 Configuration Manager Service Pack 1 (SP1) environment.

You discover that information about installed applications fails to appear in the report named Software registered in Add Remove Programs on a specific client computer.

You need to ensure that information about installed applications appears in the report.

What should you do?

- A. Modify the Enable hardware inventory on clients setting.
- B. Enable a default WMI class in the Hardware Inventory Classes list.
- C. Modify the Enable software inventory on clients setting.
- D. Add a file name to the Hardware Inventory configuration.
- E. Add a WMI class to the HardwareInventory Classes list.

F. Add a file name to the Software Inventory configuration.

G. Add a file name to Software Metering.

H. Add a WMI class to the Sms\_def.mof file.

I. Select Collect NOIDMIF files in Hardware Inventory.

Correct Answer: C

---

### QUESTION 3

Your network contains a System center 2012 Configuration Manager environment.

You are creating a configuration item that contains application settings for Microsoft Office 2010.

You need to detect whether Office 2010 is installed before validating the configuration item.

What should you do?

A. Create a query-based collection.

B. Create an automatic deployment rule.

C. Create a report to display all installed software.

D. Enable Use Windows Installer detection.

Correct Answer: D

Compliance settings contains tools to help you assess the compliance of users and client devices for many configurations, such as whether the correct Windows operating system versions are installed and configured appropriately, whether all required applications are installed and configured correctly, whether optional applications are configured appropriately, and whether prohibited applications are installed.

Note: Compliance settings in System Center 2012 Configuration Manager provides a unified interface and user experience that lets you manage the configuration and compliance of servers, laptops, desktop computers, and mobile devices in your organization.

---

### QUESTION 4

You create a deployment to install Microsoft Office 2013 The deployment targets 5,000 client computers on the network.

Two weeks after you create the deployment, you discover that Office 2013 fails to install on a client computer named Computer 1.

You need to identify whether Computer1 started downloading the Application of Office 2013.

Which log file should you review?

A. Locationservices.log

- B. Ccm.log
- C. Sdmagent.log
- D. Sitestat.log
- E. Rcmctrl.log
- F. Dcmagent.log
- G. Contenttransfermanager.log
- H. Smsexec.log
- I. Wsyncmgr.log
- J. Ciagent.log
- K. Hman.tog

Correct Answer: G

ContentTransferManager.log is a client log file that schedules the Background Intelligent Transfer Service (BITS) or the Server Message Block (SMB) to download or to access packages.

---

#### **QUESTION 5**

Your network contains a System Center 2012 R2 Configuration Manager Service Pack 1 (SP1) environment.

The Client Status node in the Configuration Manager console shows a downward trend in client health.

You verify the logs on several clients.

You discover that the clients are healthy and are communicating normally to management points.

You need to identify the reasons why the Configuration Manager console displays a downward trend in client health.

Which two reasons should you identify? Each correct answer presents a complete solution.

- A. The Active Directory sites that are members of boundary groups are modified.
- B. The age set in the Delete Aged Discovery Data maintenance task is shorter than the Heartbeat Discovery interval.
- C. The Delete Obsolete Client Discovery Data site maintenance task is disabled.
- D. In Client Status Settings Properties, the Hardware inventory during the following days interval is shorter than the Hardware inventory interval.
- E. Microsoft SQL Server replication to the management points stopped.

Correct Answer: BC

The Delete Obsolete Client Discovery Data task deletes obsolete client records from the Configuration Manager site database. A record that is marked obsolete typically was superseded by a newer record for the same client. The newer record becomes the client's current record, and the older record becomes obsolete. When you enable this task, you

should configure the schedule to run at an interval greater than the heartbeat discovery schedule. This allows clients to send Discovery Data Records (DDRs) so that the obsolete bit is set correctly.

---

### QUESTION 6

You have a System Center 2012 R2 Configuration Manager Service Pack 1 (SP1) deployment.

The relevant Configuration Manager client computers are configured as shown in the following table.

Computer name	RAM	Operating system	User
Client1	2 GB	Windows 7	User1
Client2	4 GB	Windows 8.1	User2

You create a user collection named Collection1. You add User1 and User2 to Collection1.

You create an application named App1. App1 has one deployment type and the following requirements:

- Total physical memory: Greater than or equal to 2,000 MB
- Operating system: Windows 7 or Windows 8

You deploy App1 to Collection1 as a required deployment. The deadline is set to the default.

You need to identify which status will appear for the App1 deployment before the users log on to a computer and after the users log on to the computer.

What should you identify? To answer, select the appropriate options in the answer area.

Hot Area:

## Answer Area

Before User1 and User2 log on to a client computer

Success: 

0	▲▼
1	
2	

In progress: 

0	▲▼
1	
2	

Requirements not met: 

0	▲▼
1	
2	

Unknown: 

0	▲▼
1	
2	

Four hours after User1 and User2 log on to the computer:

Success: 

0	▲▼
1	
2	

In progress: 

0	▲▼
1	
2	

Requirements not met: 

0	▲▼
1	
2	

Unknown: 

0	▲▼
1	
2	

Correct Answer:

## Answer Area

Before User1 and User2 log on to a client computer

Success: 

0	▲▼
1	
2	

In progress: 

0	▲▼
1	
2	

Requirements not met: 

0	▲▼
1	
2	

Unknown: 

0	▲▼
1	
2	

Four hours after User1 and User2 log on to the computer:

Success: 

0	▲▼
1	
2	

In progress: 

0	▲▼
1	
2	

Requirements not met: 

0	▲▼
1	
2	

Unknown: 

0	▲▼
1	
2	

---

## QUESTION 7

Your network contains a System Center 2012 R2 Configuration Manager Service Pack 1 (SP1) environment.

Your company deploys 1,000 client computers.

You discover that information about printers fails to appear in any inventory queries or reports.

Information about other hardware devices appears in the inventory queries and reports.

You need to ensure that Configuration Manager data includes information about the printers.

What should you do?

- A. Add a WMI class to the Hardware Inventory Classes list.
- B. Enable a default WMI class in the Hardware Inventory Classes list.
- C. Add a file name to the Software Inventory configuration.
- D. Add a file name to the Hardware inventory configuration.
- E. Add a file name to Software Metering.
- F. SelectCollect NOIDMIFfiles in Hardware Inventory.
- G. Add a WMI class to the Sms\_def.mof file.
- H. Modify the Enable software inventory on clients setting.
- I. Modify the Enable hardware inventory on clientssetting.

Correct Answer: B

How to Extend Hardware Inventory in Configuration Manager System Center 2012 Configuration Manager hardware inventory reads information about devices by using Windows Management Instrumentation (WMI). WMI is the Microsoft implementation of web-based Enterprise Management (WBEM), which is an industry standard for accessing management information in an enterprise environment.

In previous versions of Configuration Manager, you could extend hardware inventory by modifying the file sms\_def.mof on the site server.

In System Center 2012 Configuration Manager, you no longer edit the sms\_def.mof file as you did in Configuration Manager 2007. Instead, you can enable and disable WMI classes, and add new classes to collect by hardware inventory by

using client settings. Configuration Manager provides the following methods to extend hardware inventory:

Enable or disable existing inventory classes - You can enable or disable the default inventory classes used by Configuration Manager or you can create custom client settings that allow you to collect different hardware inventory classes from

specified collections of clients.

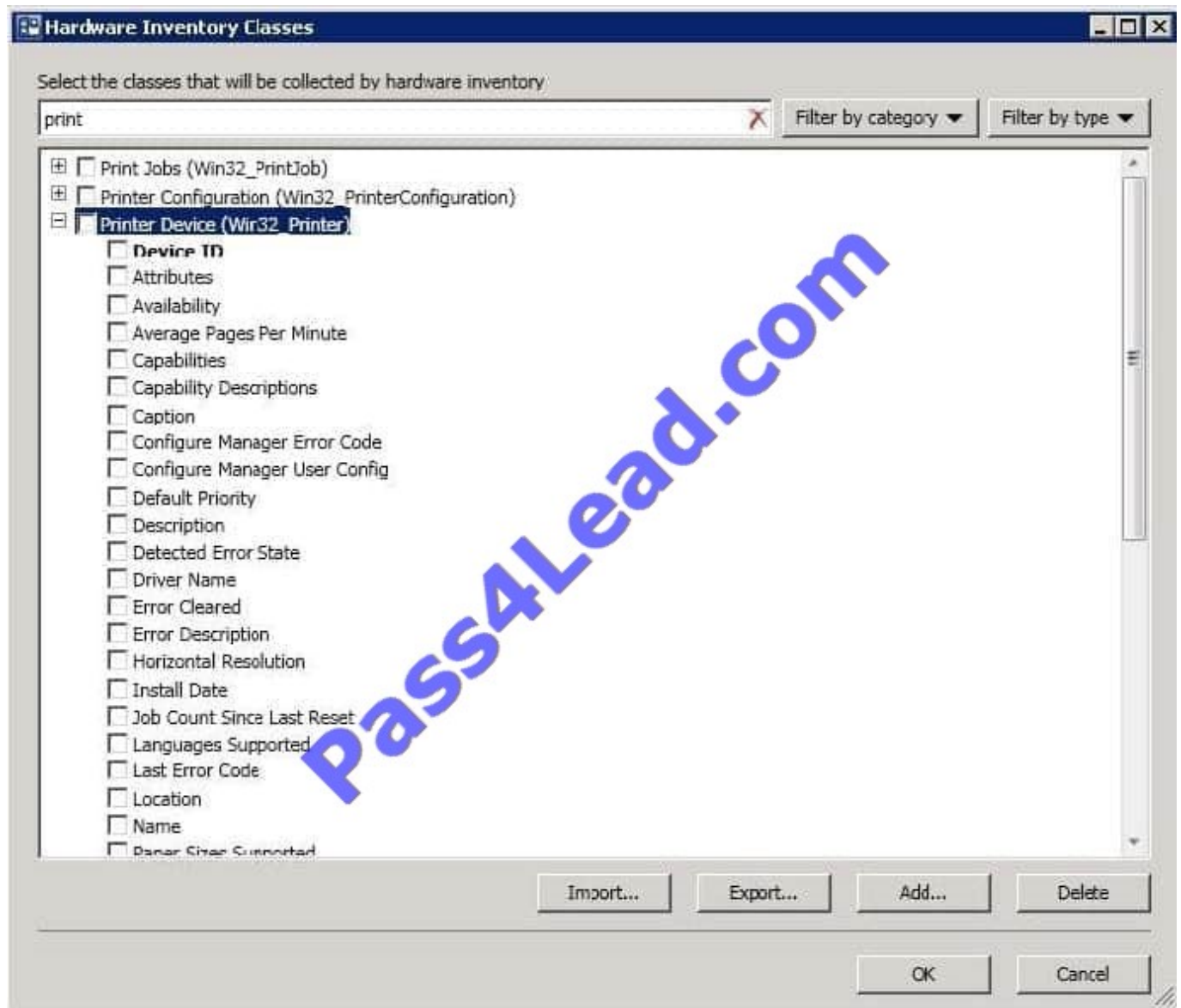
Add a new inventory class - You can add a new inventory class from the WMI namespace of another device.

Import and export hardware inventory classes - You can import and export Managed Object Format

(MOF) files that contain inventory classes from the Configuration Manager console. Create NOIDMIF Files - Use NOIDMIF files to collect information about client devices that cannot be inventoried by Configuration Manager.

Create IDMIF Files - Use IDMIF files to collect information about assets in your organization that are not associated with a Configuration Manager client, for example, projectors, photocopiers and networkprinters.

Note:



References: How to Extend Hardware Inventory in Configuration Manager <http://technet.microsoft.com/en-us/library/gg712290.aspx>

---

## QUESTION 8



Your network contains a single Active Directory forest named contoso.com.

Contoso.com contains three System Center 2012 Configuration Manager sites and one System Center Configuration Manager 2007 site.

You need to ensure that you can transfer objects from Configuration Manager 2007 to Configuration Manager 2012.

What should you do?

A. Assign the computer account of the Central Administration site server permission to the Configuration Manager 2007 site. Assign the computer account of the Central Administration site server permissions to the Microsoft SQL Serverdatabase instance.

B. Extend the Active Directory schema and assign the Central Administration site server permissions to the System\System Management container.

C. Connect the Configuration Manager 2007 primary site as a child primary site of the Configuration Manager 2012 primary site.

D. Connect the Configuration Manager 2012 primary site as a child primary site of the Configuration Manager 2007 primary site.

Correct Answer: A

For a System Center 2012 Configuration Manager source site, this accountrequires Read permission to all source site objects, you grant this permission to the account by using role- based administration.

---

## QUESTION 9

Your network contains a single Active Directory domain named contoso.com. System Center 2012 R2 Configuration Manager Service Pack 1 (SP1) is deployed to contoso.com.

You have a Windows 8.1 operating system image named Image1 in Configuration Manager. Image1 has the data source of \\server1.contoso.com\source\Image1.wim. New client computers are deployed by using Image1.

You have an application named App1. App1 is a configuration utility that must be installed by using a Windows Installer (MSI) package.

You need to ensure that App1 is included in all future deployments of Image1.

Which four actions should you perform in sequence? To answer, move the appropriate actions from the list of actions to the answer area and arrange them in the correct order.

Select and Place:

**Actions**

- Refresh Image1.
- Install App1.exe.
- Deploy Image 1.
- Capture an image.
- Mount Image1.wim.
- Unmount Image1.wim.
- Schedule updates for Image1.
- Distribute the image to distribution points.

**Answer Area**

www.Pass4Lead.com

Navigation arrows: Right arrow, Left arrow, Up arrow, Down arrow.

Correct Answer:

**Actions**

- Refresh Image1.
- 
- 
- 
- Mount Image1.wim.
- Unmount Image1.wim.
- Schedule updates for Image1.
- 
- 

**Answer Area**

- Deploy Image 1.
- Install App1.exe.
- Capture an image.
- Distribute the image to distribution points.

www.Pass4Lead.com

Navigation arrows: Right arrow, Left arrow, Up arrow, Down arrow.

**QUESTION 10**

You have a System Center 2012 R2 Configuration Manager Service Pack 1 (SP1) deployment that contains 8,000 client computers.

When a custom application named App1.exe is installed on a computer, a registry value of App1=TRUE is added to the registry. App1 is installed on approximately half of the computers.

You need to recommend a solution for creating a collection named Collection1 that contains only computers on which App1.exe is installed. The solution must minimize administrative effort.

What should you include in the recommendation?

- A. a collection that has a direct membership rule
- B. a configuration item

- C. the custom client device settings
- D. a software category

Correct Answer: A

Membership rule of the direct rule type let you choose the users or computers that you want to add as members to a collection. This rule gives you direct control over which resources are members of the collection. This membership does not change unless a resource is removed from Configuration Manager. Configuration Manager must have discovered the resources or you must have imported the resources before you can add them to a direct rule collection. Direct rule collections have a higher administrative overhead than query rule collections because you must make changes to this collection type manually.

---

### QUESTION 11

Your network contains a single Active Directory domain.

The functional level of the domain is Server 2003. The domain contains the following server:

- Ten servers that run Windows Server 2003
- Twenty servers that run Windows Server 2008
- One server that has Microsoft Exchange Server 2007 installed
- One server that has System Center 2012 Configuration Manager installed

Users have mobile devices that run Windows Mobile 6.5 and Windows Phone.

You need to ensure that you can manage the settings of the mobile devices and perform remote device wipes by using Configuration Manager.

What should you do?

- A. Upgrade the Exchange server to Exchange Server 2010. Configure an Exchange connector.
- B. Change the functional level of the domain to windows 2008. Upgrade the Exchange server to Exchange Server2010.
- C. Upgrade all Windows 2003 domain controllers to Windows 2008.
- D. Upgrade all of the domain controllers to Windows 2008 R2. Configure an Exchange connector.

Correct Answer: A

Need to upgrade to Exchange Server 2010 and configure an Exchange connector.

---

### QUESTION 12

You have a System Center 2012 R2 Configuration Manager Service Pack 1 (SP1) deployment.

You enable the Backup Site Server maintenance task and you configure the task to back up to a local drive.

You need to copy the backup to a network share automatically as soon as the backup completes.

What should you do? To answer, select the appropriate options in the answer area.

Hot Area:

**Answer Area**

Name of the script that copies the backup:

AfterBackup.bat  
AfterBackup.cmd  
AfterBackup.ps1  
AfterBackup.vbs

Location in which to store the script:

%systemroot%\WinSxS\Backup  
%systemroot%\WinSxS\Backup  
%ProgramFiles%\Microsoft Configuration Manager\inboxes\smsbkup.box  
%ProgramFiles%\Microsoft Configuration Manager\inboxes\schedule.box

Correct Answer:

**Answer Area**

Name of the script that copies the backup:

AfterBackup.bat  
AfterBackup.cmd  
AfterBackup.ps1  
AfterBackup.vbs

Location in which to store the script:

%systemroot%\WinSxS\Backup  
%systemroot%\WinSxS\Backup  
%ProgramFiles%\Microsoft Configuration Manager\inboxes\smsbkup.box  
%ProgramFiles%\Microsoft Configuration Manager\inboxes\schedule.box

The AfterBackup.bat file is used to perform post-backup actions automatically after the Backup Site Server maintenance task runs successfully. To create the AfterBackup.bat batch file

To Read the [Whole Q&As](#), please purchase the [Complete Version](#) from [Our website](#).

## Try our product !

**100%** Guaranteed Success

**100%** Money Back Guarantee

**365** Days Free Update

**Instant Download** After Purchase

**24x7** Customer Support

Average **99.9%** Success Rate

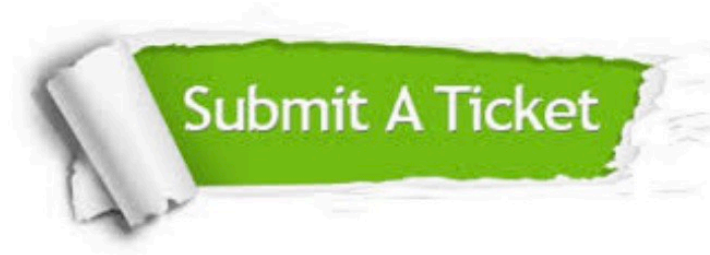
More than **800,000** Satisfied Customers Worldwide

Multi-Platform capabilities - **Windows, Mac, Android, iPhone, iPod, iPad, Kindle**

## Need Help

Please provide as much detail as possible so we can best assist you.

To update a previously submitted ticket:



 <p><b>One Year Free Update</b> Free update is available within One Year after your purchase. After One Year, you will get 50% discounts for updating. And we are proud to boast a 24/7 efficient Customer Support system via Email.</p>	 <p><b>Money Back Guarantee</b> To ensure that you are spending on quality products, we provide 100% money back guarantee for 30 days from the date of purchase.</p>	 <p><b>Security &amp; Privacy</b> We respect customer privacy. We use McAfee's security service to provide you with utmost security for your personal information &amp; peace of mind.</p>
---------------------------------------------------------------------------------------------------------------------------------------------------------------------------------------------------------------------------------------------------------------------------------------------------------------------------------	-------------------------------------------------------------------------------------------------------------------------------------------------------------------------------------------------------------------------------------------------------------	------------------------------------------------------------------------------------------------------------------------------------------------------------------------------------------------------------------------------------------------------------------------------------

Any charges made through this site will appear as Global Simulators Limited.

All trademarks are the property of their respective owners.