

**100%** Money Back  
**Guarantee**

**Vendor:**Microsoft

**Exam Code:**70-458

**Exam Name:**Transition Your MCTS on SQL Server  
2008 to MCSA: SQL Server 2012, Part 2

**Version:**Demo

### QUESTION 1

You are developing a SQL Server Integration Services (SSIS) package. An Execute SQL task in the package checks product stock levels and sets a package variable named InStock to TRUE or FALSE depending on the stock level found.

After the successful execution of the Execute SQL task, one of two data flow tasks must run, depending on the value of the InStock variable.

You need to set the precedence constraints.

Which value for the evaluation operation should you use? (To answer, select the appropriate option for the evaluation operation in the answer area.)

**Precedence Constraint Editor**

A precedence constraint defines the workflow between two executables. The precedence constraint can be based on a combination of the execution results and the evaluation of expressions.

Constraint options

Evaluation operation: [Empty dropdown]

Value: Success [Dropdown]

Expression: [Empty text box] [Test]

Multiple constraints

Hot Area:

**Precedence Constraint Editor**

A precedence constraint defines the workflow between two executables. The precedence constraint can be based on a combination of the execution results and the evaluation of expressions.

Constraint options

Evaluation operation: [Open dropdown menu]

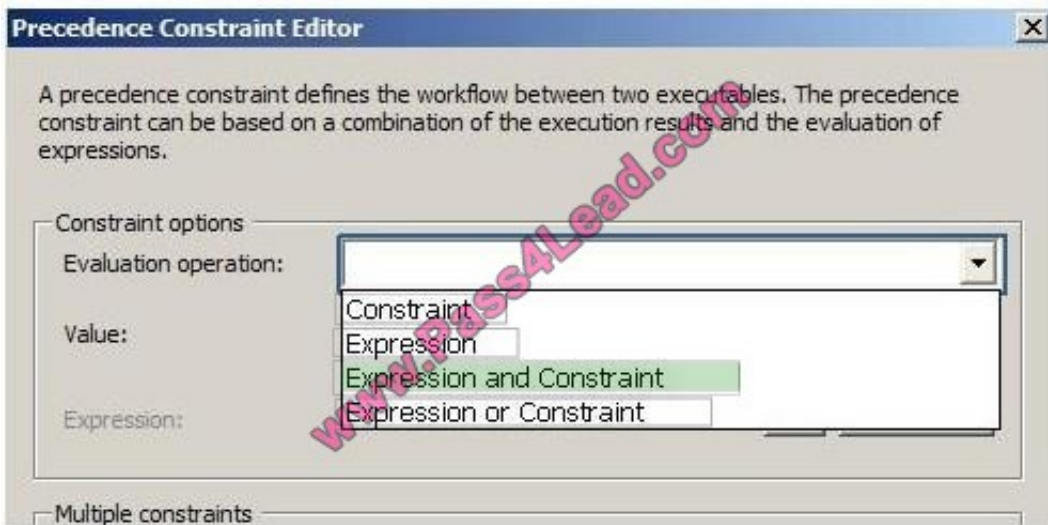
- Constraint
- Expression
- Expression and Constraint
- Expression or Constraint

Value: [Empty dropdown]

Expression: [Empty text box] [Test]

Multiple constraints

Correct Answer:



---

## QUESTION 2

You are the lead database administrator (DBA) of a Microsoft SQL Server 2012 environment. All DBAs are members of the DOMAIN\JrDBAs Active Directory group. You grant DOMAIN\JrDBAs access to the SQL Server. You need to create a server role named SpecialDBARole that can perform the following functions:

View all databases.

View the server state.

Assign GRANT, DENY, and REVOKE permissions on logins.

You need to add DOMAIN\JrDBAs to the server role. You also need to provide the least level of privileges necessary.

A.

```
CREATE SERVER ROLE [SpecialDBARole] AUTHORIZATION setupadmin;
```

B.

```
ALTER SERVER ROLE [SpecialDBARole] ADD MEMBER [DOMAIN\JrDBAs];
```

C.

```
CREATE SERVER ROLE [SpecialDBARole] AUTHORIZATION securityadmin;
```

D.

```
GRANT VIEW DEFINITION TO [SpecialDBARole];
```

E.

```
CREATE SERVER ROLE [SpecialDBARole] AUTHORIZATION serveradmin;
```

F.

GRANT VIEW SERVER STATE, VIEW ANY DATABASE TO [SpecialDBARole];

Correct Answer: BCF

---

### QUESTION 3

You administer a Microsoft SQL Server 2012 database.

The database is backed up according to the following schedule:

Daily full backup at 23:00 hours.

Differential backups on the hour, except at 23:00 hours.

Log backups every 10 minutes from the hour, except on the hour.

The database uses the Full recovery model.

A developer accidentally drops a number of tables and stored procedures from the database between 22:40 hours and 23:10 hours. You perform a database restore at 23:30 hours to recover the dropped table.

You need to restore the database by using the minimum amount of administrative effort. You also need to ensure minimal data loss.

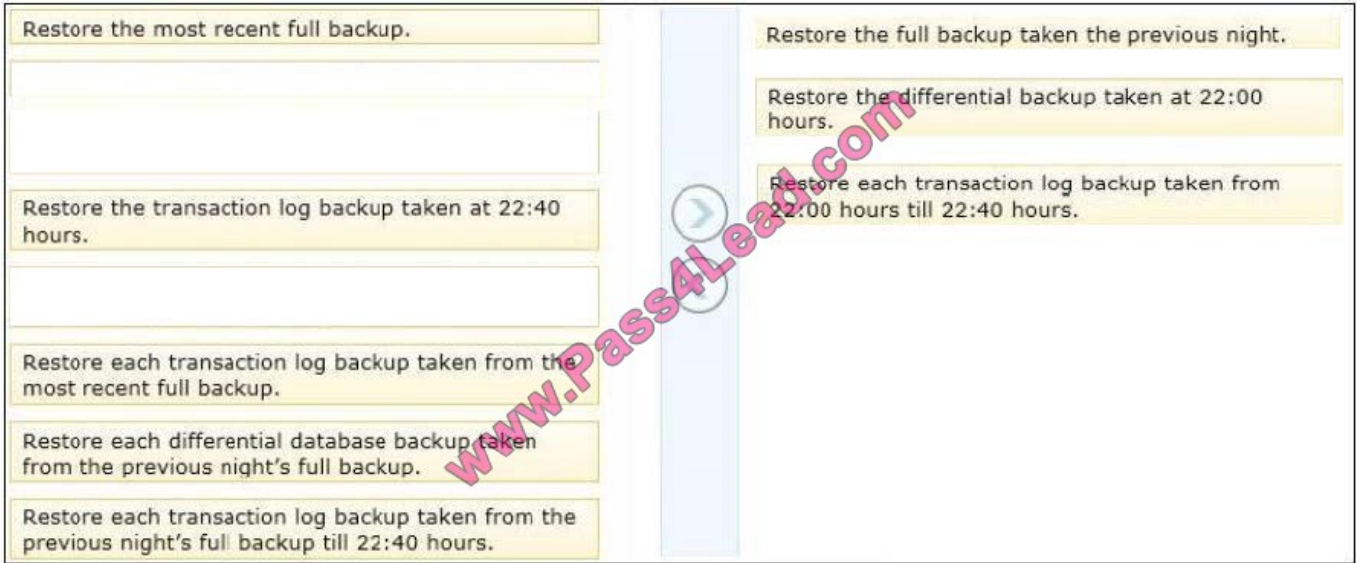
Which three actions should you perform in sequence? (To answer, move the appropriate actions from the list of actions to the answer area and arrange them in the correct order.)

Select and Place:

The screenshot shows a list of eight restore actions in a drag-and-drop interface. A vertical bar on the right contains a right-pointing arrow button. A large pink watermark 'www.Pass4Lead.com' is overlaid diagonally across the interface.

- Restore the most recent full backup.
- Restore the full backup taken the previous night.
- Restore the differential backup taken at 22:00 hours.
- Restore the transaction log backup taken at 22:40 hours.
- Restore each transaction log backup taken from 22:00 hours till 22:40 hours.
- Restore each transaction log backup taken from the most recent full backup.
- Restore each differential database backup taken from the previous night's full backup.
- Restore each transaction log backup taken from the previous night's full backup till 22:40 hours.

Correct Answer:



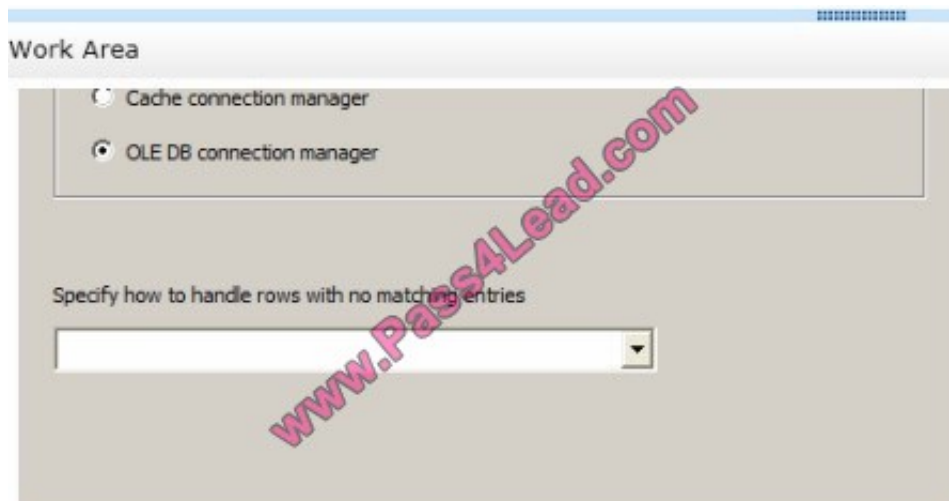
#### QUESTION 4

You are developing a SQL Server Integration Services (SSIS) package to implement an incremental data load strategy. The package reads rows from a source system and compares them to rows in a destination system. New rows will be inserted and changed rows will be updated.

You have used a Lookup transformation and a Conditional Split transformation. The Lookup transformation joins the source and destination table on the business key, and includes all columns from the destination table in the data flow output.

The Conditional Split transformation inspects the destination columns and directs data flow to either insert new records or update existing records.

You need to configure the Lookup transformation to ensure that all records flow to the Conditional Split transformation, regardless of whether the rows match an existing row in the destination table. Which setting should you select? (To answer, select the appropriate option in the answer area.)



Hot Area:

Cache connection manager  
 OLE DB connection manager

Specify how to handle rows with no matching entries

Ignore Failure  
Redirect rows to error output  
Fail component  
Redirect rows to no match output

Correct Answer:

Cache connection manager  
 OLE DB connection manager

Specify how to handle rows with no matching entries

Ignore Failure  
Redirect rows to error output  
Fail component  
Redirect rows to no match output

---

### QUESTION 5

You administer three Microsoft SQL Server 2012 servers named ServerA, Servers, and ServerC.

ServerA is the acting principal and ServerB is the mirror.

You need to add ServerC as a witness to the existing mirroring session between ServerA and ServerB. You need to achieve this goal without delaying synchronization. Which three actions should you perform in sequence? (To answer, move

the appropriate actions from the list of actions to the answer area and arrange them in the correct order.)

Select and Place:

On ServerC, create an endpoint for use by the witness.	
Ensure that the same Windows Login exists on each server and grant Connect permissions to each server's endpoint.	
On ServerA, alter the principal database to use the endpoint on ServerC as the witness.	
On ServerA, pause the mirroring session between ServerA and ServerB.	
On ServerB, alter the principal database to use the endpoint on ServerC as the witness.	
Ensure that the same Proxy exists on each server and grant Connect permissions to each server's endpoint.	
On ServerA, resume the mirroring session between ServerA and ServerB.	

Correct Answer:

	On ServerC, create an endpoint for use by the witness.
	Ensure that the same Windows Login exists on each server and grant Connect permissions to each server's endpoint.
	On ServerA, alter the principal database to use the endpoint on ServerC as the witness.
On ServerA, pause the mirroring session between ServerA and ServerB.	
On ServerB, alter the principal database to use the endpoint on ServerC as the witness.	
Ensure that the same Proxy exists on each server and grant Connect permissions to each server's endpoint.	
On ServerA, resume the mirroring session between ServerA and ServerB.	

## QUESTION 6

You develop a SQL Server Integration Services (SSIS) package that imports Windows Azure SQL Database data into a data warehouse every night.

The Windows Azure SQL Database data contains many misspellings and variations of abbreviations. To import the data, a developer used the Fuzzy Lookup transformation to choose the closest-matching string from a reference table of allowed values. The number of rows in the reference table is very large.

If no acceptable match is found, the Fuzzy Lookup transformation passes a null value. The current setting for the Fuzzy Lookup similarity threshold is 0.50.

Many values are incorrectly matched.

You need to ensure that more accurate matches are made by the Fuzzy Lookup transformation without degrading performance.

- A. Change the similarity threshold to 0.40.
- B. Decrease the maximum number of matches per lookup.
- C. Change the similarity threshold to 0.55.
- D. Change the Exhaustive property to True.

Correct Answer: C

The similarity thresholds can be set at the component and join levels. The join-level similarity threshold is only available when the transformation performs a fuzzy match between columns in the input and the reference table. The similarity range is 0 to 1. The closer to 1 the threshold is, the more similar the rows and columns must be to qualify as duplicates.

---

#### QUESTION 7

You are developing a SQL Server Integration Services (SSIS) package to implement an incremental data load strategy. The package reads data from a source system that uses the SQL Server change data capture (CDC) feature.

You have added a CDC Source component to the data flow to read changed data from the source system.

You need to add a data flow transformation to redirect rows for separate processing of insert, update, and delete operations.

- A. Pivot
- B. Merge
- C. Audit
- D. CDC Splitter

Correct Answer: D

<http://technet.microsoft.com/en-us/library/hh758656.aspx>

---

#### QUESTION 8

You are developing a SQL Server Integration Services (SSIS) package.

The package control flow will contain many tasks. The tasks will execute consecutively and none will execute more than once. Certain groups of tasks will share variable and transaction scope.

You need to group tasks together while enabling them to be collapsed and expanded as a group.

Which item should you use from the SSIS Toolbox? (To answer, select the appropriate item in the answer area.)

Hot Area:





Correct Answer:



## QUESTION 9

You are designing a SQL Server Integration Services (SSIS) 2012 package that imports data from a Windows Azure SQL Database database into a SQL Server database.

The SSIS package has the following requirements:

Every night, a very large amount of data is imported into the staging database.

Package processing time must be minimized.

The package must run on its own dedicated server when it is deployed to production.

Transaction log activity when data is imported must be minimized.

You need to design the package to meet the requirements.

- A. Raw File
- B. OLE DB
- C. ODBC

D. Bulk Insert

Correct Answer: B

---

### QUESTION 10

You are completing the installation of the Data Quality Server component of SQL Server Data Quality Services (DQS).

You need to complete the post-installation configuration.

- A. Install ADOMD.NET.
- B. Run the Configuration component in the Data Quality Client.
- C. Run the DQSInstaller.exe command.
- D. Make the data available for DQS operations.

Correct Answer: C

---

### QUESTION 11

You administer several Microsoft SQL Server 2012 servers. Your company has a number of offices across the world connected by using a wide area network (WAN).

Connections between offices vary significantly in both bandwidth and reliability.

You need to identify the correct replication method for each scenario.

What should you do? (To answer, drag the appropriate replication method or methods to the correct location or locations in the answer area. Each replication method may be used once, more than once, or not at all.)

Select and Place:

Replication Method	Scenario	
Transactional Replication	Multiple databases on the same low-latency subnet must allow applications to write changes locally, and these changes must be replicated to all related databases.	<input type="text"/>
Peer-to-Peer Replication	An order summary table is repopulated once a week. This table must be replicated to all databases.	<input type="text"/>
Snapshot Replication	Field offices using unreliable connections keep a local copy of the product catalog and process orders locally. These orders must be periodically replicated to all other offices.	<input type="text"/>
Merge Replication	Information in an order-tracking database must be replicated across a low-latency connection as changes occur to multiple reporting databases.	<input type="text"/>

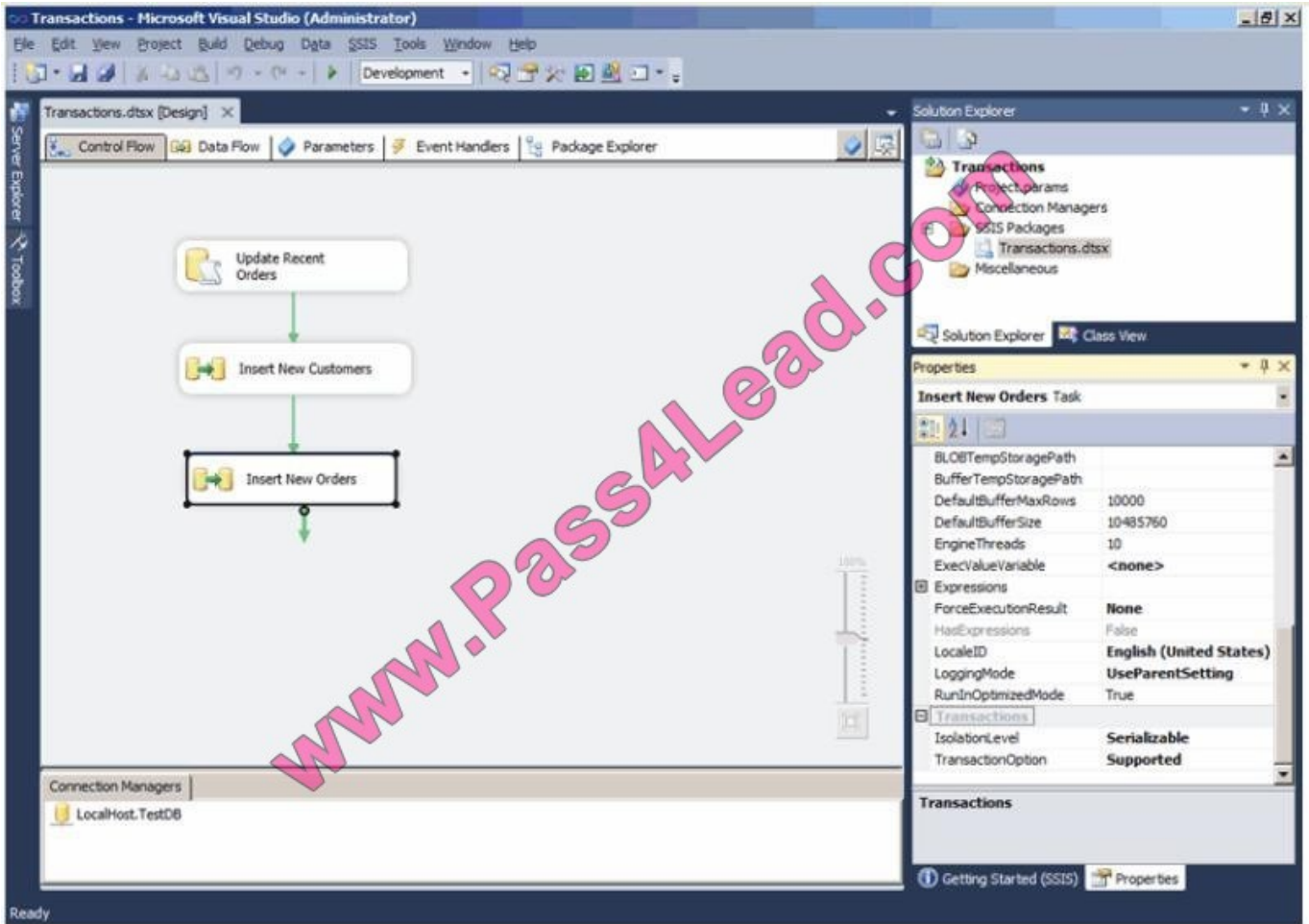
Correct Answer:

Replication Method	Scenario	
	Multiple databases on the same low-latency subnet must allow applications to write changes locally, and these changes must be replicated to all related databases.	Peer-to-Peer Replication
	An order summary table is repopulated once a week. This table must be replicated to all databases.	Snapshot Replication
	Field offices using unreliable connections keep a local copy of the product catalog and process orders locally. These orders must be periodically replicated to all other	Merge Replication
	Information in an order-tracking database must be replicated across a low-latency connection as changes occur to multiple reporting databases.	Transactional Replication

**QUESTION 12**

You are designing a package control flow. The package moves sales order data from a Windows Azure SQL Database transactional database to an on-premise reporting database. The package will run several times a day, while new sales orders are being added to the transactional database.

The current design of the package control flow is shown in the answer area. (Click the Exhibit button.)



The Insert New Orders Data Flow task must meet the following requirements:

Usage of the tempdb database should not be impacted.

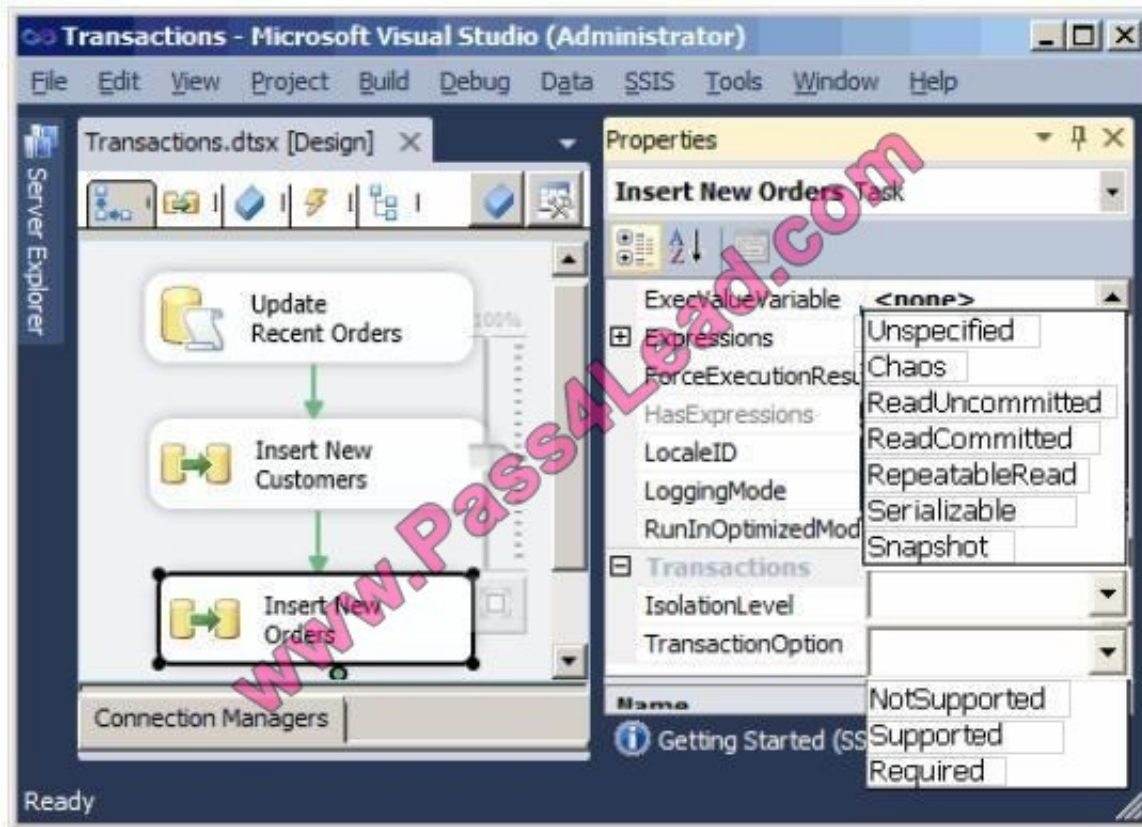
Concurrency should be maximized, while only reading committed transactions.

If the task fails, only that task needs to be rolled back.

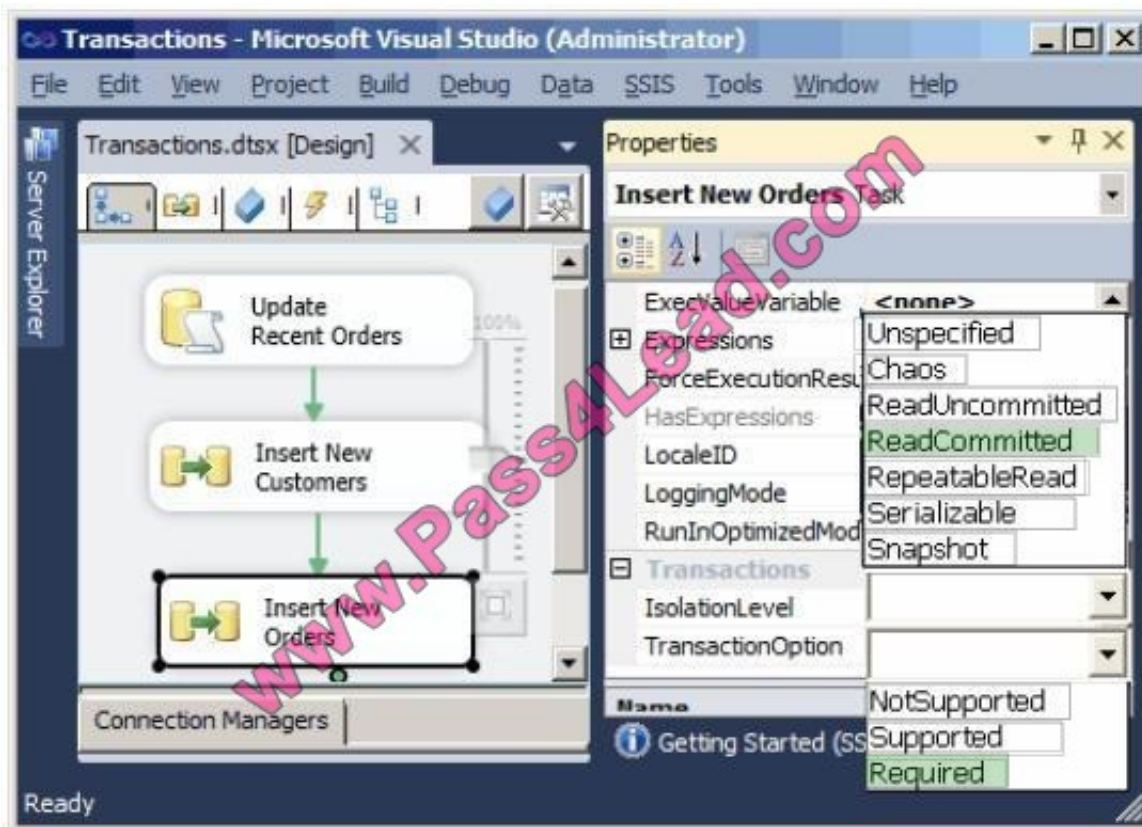
You need to configure the Insert New Orders Data Flow task to meet the requirements.

How should you configure the transaction properties? To answer, select the appropriate setting or settings in the answer area.

Hot Area: Hot Area:



Correct Answer:





To Read the [Whole Q&As](#), please purchase the [Complete Version](#) from [Our website](#).

## Try our product !

**100%** Guaranteed Success

**100%** Money Back Guarantee

**365** Days Free Update

**Instant Download** After Purchase

**24x7** Customer Support

Average **99.9%** Success Rate

More than **800,000** Satisfied Customers Worldwide

Multi-Platform capabilities - **Windows, Mac, Android, iPhone, iPod, iPad, Kindle**

## Need Help

Please provide as much detail as possible so we can best assist you.

To update a previously submitted ticket:



 <p><b>One Year Free Update</b> Free update is available within One Year after your purchase. After One Year, you will get 50% discounts for updating. And we are proud to boast a 24/7 efficient Customer Support system via Email.</p>	 <p><b>Money Back Guarantee</b> To ensure that you are spending on quality products, we provide 100% money back guarantee for 30 days from the date of purchase.</p>	 <p><b>Security &amp; Privacy</b> We respect customer privacy. We use McAfee's security service to provide you with utmost security for your personal information &amp; peace of mind.</p>
---------------------------------------------------------------------------------------------------------------------------------------------------------------------------------------------------------------------------------------------------------------------------------------------------------------------------------	-------------------------------------------------------------------------------------------------------------------------------------------------------------------------------------------------------------------------------------------------------------	------------------------------------------------------------------------------------------------------------------------------------------------------------------------------------------------------------------------------------------------------------------------------------

Any charges made through this site will appear as Global Simulators Limited.

All trademarks are the property of their respective owners.