

100% Money Back
Guarantee

Vendor:Microsoft

Exam Code:70-688

Exam Name:Supporting Windows 8.1

Version:Demo

QUESTION 1

You have client computers that run Windows 8 Pro.

You need to recommend a solution to roll back the Windows Defender engine and the malware signature files on the computers. The solution must minimize administrative effort.

What should you include in the recommendation?

- A. File History
- B. the Program and Features Control Panel item
- C. Windows 7 File Recovery
- D. System Restore points

Correct Answer: D

Explanation: A restore point is a representation of a stored state of your computer's system files. You can use a restore point to restore your computer's system files to an earlier point in time. <http://technet.microsoft.com/en-us/library/ff398019.aspx>

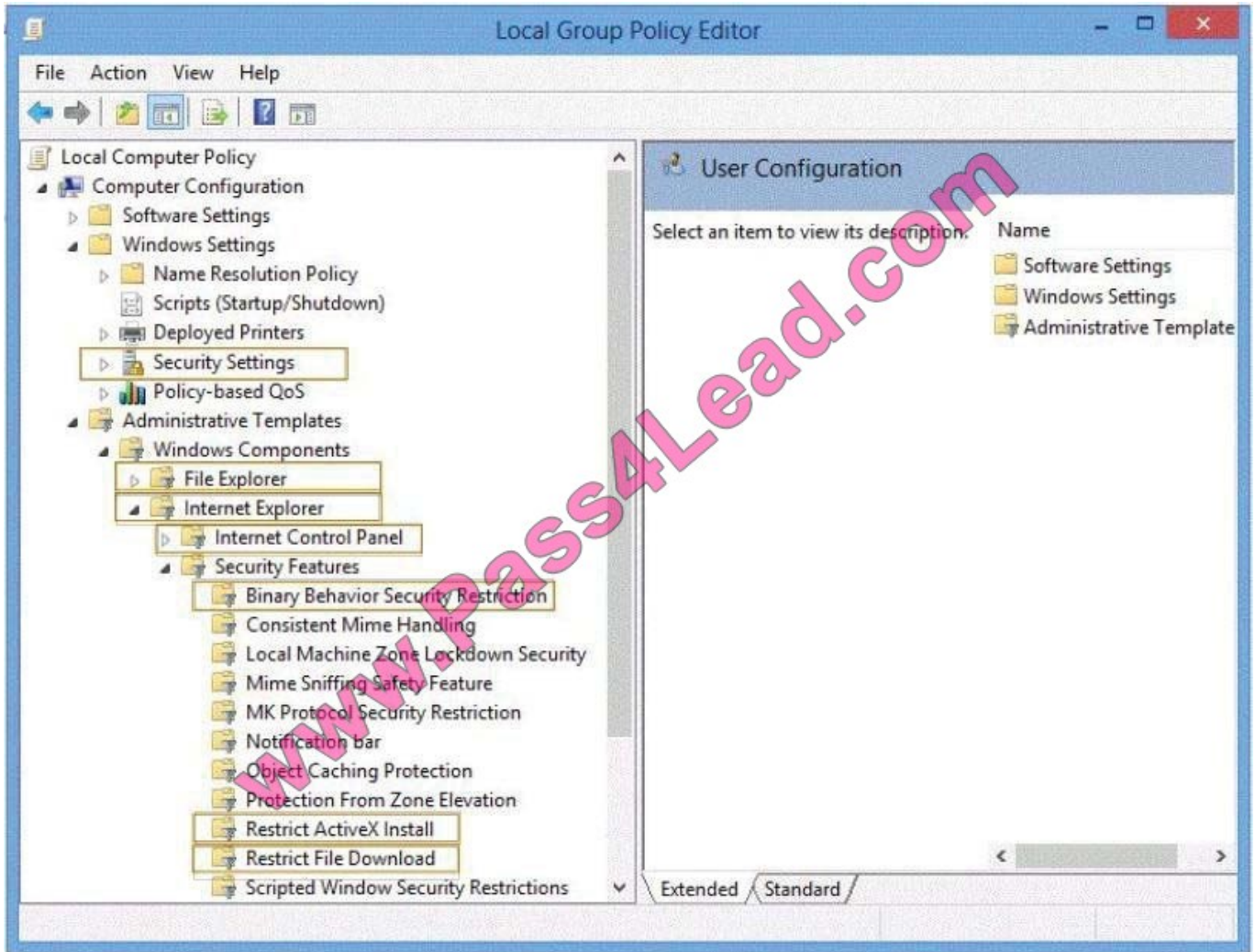
QUESTION 2

You support desktop computers that run Windows 8 Enterprise. One computer is a member of a workgroup and is used as a guest computer in a reception area.

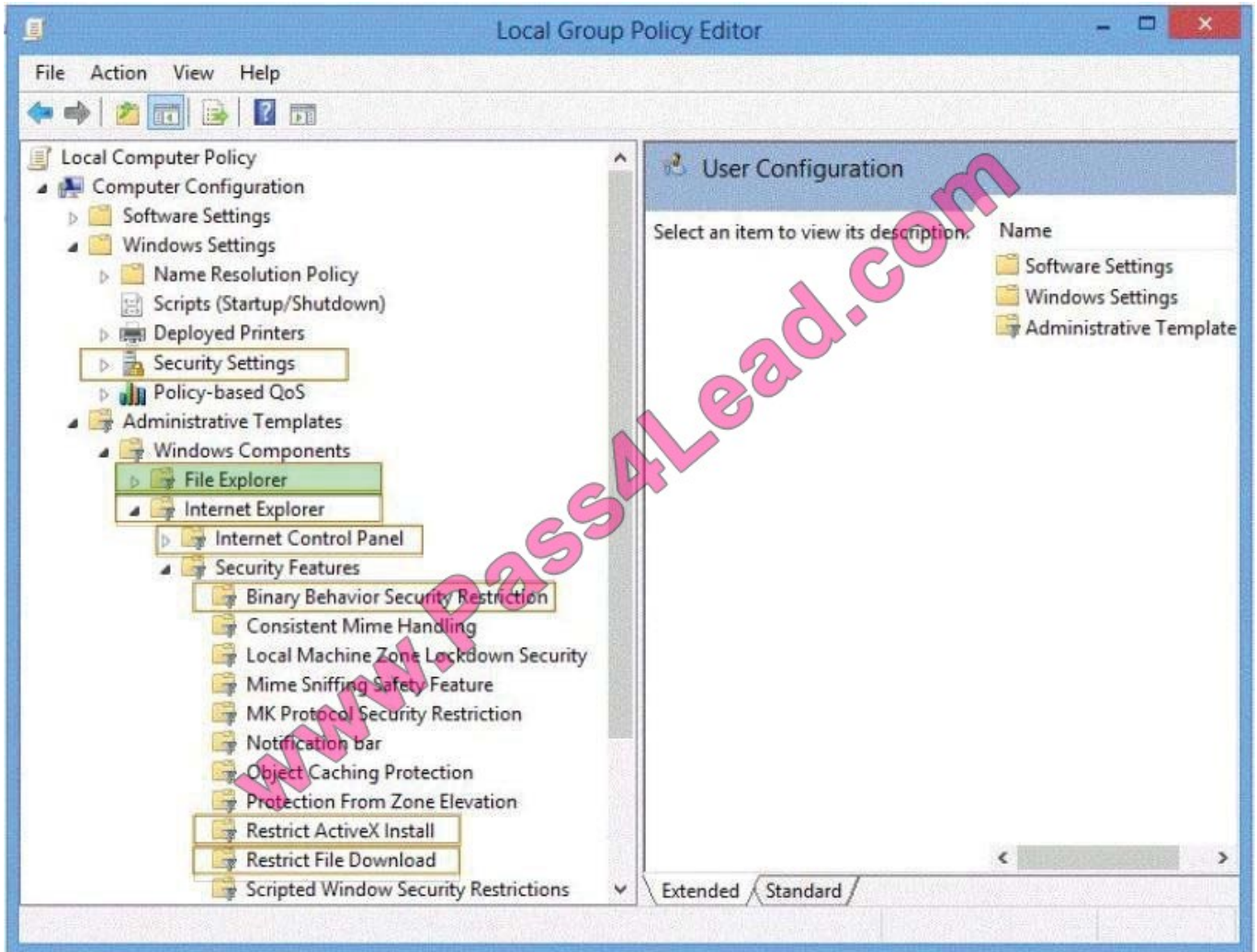
You need to configure the SmartScreen setting to require administrator approval before running downloaded unknown software on the desktop computer.

Which policy setting should you use? (To answer, select the appropriate object in the answer area.)

Hot Area:



Correct Answer:



<http://technet.microsoft.com/en-us/library/cc771104.aspx>

QUESTION 3

You manage Windows 8.1 client computers that are part of a workgroup. These computers are configured to use Microsoft Update. Updates are downloaded every day at 10:00 and installed automatically.

Users report that their computers sometimes reboot without any interaction,

You need to prevent unplanned automatic reboots of the computers.

What should you do?

- A. Disable the Re-prompt for restart with scheduled installations policy setting.
- B. Disable the Delay Restart for scheduled installations policy setting.
- C. Disable the No auto-restart with logged on users for scheduled automatic updates installations policy setting.
- D. Set the Configure automatic updating policy to 3 - Auto download and notify for install.

Correct Answer: A

Explanation: <http://technet.microsoft.com/en-us/library/dd939933%28v=WS.10%29.aspx>

QUESTION 4

You support desktop computers for a company named Fabrikam, Inc. The computers are members of the Active Directory domain named fabrikam.com.

Fabrikam works with a supplier named Contoso, Ltd. Each company has a public key infrastructure (PKI), and no public certificate authorities (CAs) are used. Fabrikam employees regularly use a Contoso website that is hosted on a server in

the contoso.com domain. The website requires SSL and mutual authentication.

You need to configure the computers to allow Fabrikam users to access the Contoso website without any warning prompts. You also need to use the fewest certificates possible.

Which certificate or certificates should you use? (To answer, drag the appropriate certificate to the correct certificate store. Each certificate may be used once, more than once, or not at all. You

may need to drag the split bar between panes or scroll to view content.)

Select and Place:

Certificate	Certificate Store
contoso.com root certificate	trusted root authorities certificate store for the local computer account
Fabrikam root certificate	untrusted certificates store for the user's account
client (user) certificate issued by Contoso	personal certificate store for the local computer account
client (user) certificate issued by Fabrikam	personal certificate store for the user's account
no certificate required	

Correct Answer:



Contoso.com provided the resources. contoso.com be the trusted root authorities store No untrusted certificates Not allow access to local computer account (just to user account) User account access through client (user) certificate issued by Contoso

References: <http://technet.microsoft.com/en-us/library/cc776679%28v=WS.10%29.aspx>

QUESTION 5

You support tablets that run Windows 8 Pro. You are designing a remote access server (RAS) that will be placed behind a firewall. The firewall will accept incoming TCP connections to ports 80 and 443 only.

You want to connect to the RAS server from a tablet.

You need to create a virtual private network (VPN) connection to the RAS server.

Which VPN tunneling protocol should you use?

- A. IPSec/L2TP
- B. SSTP
- C. PPTP
- D. IPSec/IKEv2

Correct Answer: B

Explanation: Was a bit difficult to find information on Technet regarding SSTP but, the below explains it well and why it would be used here. Secure Socket Tunneling Protocol Reference:

http://en.wikipedia.org/wiki/Secure_Socket_Tunneling_Protocol <http://technet.microsoft.com/en-us/library/cc783910%28v=WS.10%29.aspx> Secure Socket Tunneling Protocol (SSTP) is a form of VPN tunnel that provides a mechanism to transport PPP or L2TP traffic through an SSL 3.0 channel. SSL

provides transport-level security with key-negotiation, encryption and traffic integrity checking. The use of SSL over TCP port 443 allows SSTP to pass through virtually all firewalls and proxy servers.

QUESTION 6

You have 100 client Windows 8.1 computers. Users are NOT configured as local administrators.

You need to prevent the users from running applications that they downloaded from the Internet, unless the applications are signed by a trusted publisher.

What should you configure in the Security settings from the Action Center?

- A. Virus protection
- B. User Account Control
- C. Windows SmartScreen settings
- D. Network Access Protection

Correct Answer: C

Explanation: <http://windows.microsoft.com/en-ZA/internet-explorer/products/ie-9/features/smartscreen-filter>
<http://windows.microsoft.com/en-US/windows7/SmartScreen-Filter-frequently-asked-questions-IE9>
<http://technet.microsoft.com/enus/network/bb545879.aspx> <http://technet.microsoft.com/en-us/library/cc709691%28v=WS.10%29.aspx>

QUESTION 7

Your company has a main office and a branch office. Each office contains several servers that run Windows Server 2012.

You need to configure BranchCache for the client computers in the branch office. The solution must ensure that all of the cached content is in a central location.

What should you run on each client computer?

- A. the Enable-BCLocal cmdlet
- B. the netdom command
- C. the netstat command
- D. the netsh command

Correct Answer: B

Reference: <http://dougivale.wordpress.com/2013/02/07/network-administration-commands-for-microsoft-windows-and-active-directory/#netdom> <http://technet.microsoft.com/en-us/library/hh750728.aspx>
<http://www.whitneytechnologies.com/?p=225>

QUESTION 8

Your network contains a web server named testweb.contoso.com that is used for testing.

You have a Windows 8.1 Pro laptop.

After a network administrator changes the IP address of the web server, you discover that you can no longer connect to testweb.contoso.com.

You need to resolve immediately the issue that prevents you from connecting to the server.

Which command line tool should you run?

- A. Set-DnsClient
- B. Netstat
- C. Ipconfig
- D. Netcfg

Correct Answer: B

Explanation: Ipconfig - Displays all current TCP/IP network configuration values and refreshes Dynamic Host Configuration Protocol (DHCP) and Domain Name System (DNS) settings. Used without parameters, ipconfig displays the IP

address, subnet mask, and default gateway for all adapters. Set-DnsClient - Sets the interface specific DNS client configurations on the computer. Netcfg - Installs the Windows Preinstallation Environment (WinPE), a lightweight version of

Windows used to deploy workstations.

Reference:

<http://www.microsoft.com/resources/documentation/windows/xp/all/proddocs/en-us/nbtstat.mspx?mfr=true>
<http://technet.microsoft.com/en-us/library/bb490947.aspx> <http://technet.microsoft.com/en-us/library/jj590776.aspx>
<http://technet.microsoft.com/en-us/library/hh875638.aspx> <http://technet.microsoft.com/en-us/library/bb490921.aspx>

QUESTION 9

You have a client Windows 8.1 Enterprise computer. The computer is joined to an Active Directory domain. The computer does not have a Trusted Platform Module (TPM) chip installed.

You need to configure BitLocker Drive Encryption (BitLocker) on the operating system drive.

Which Group Policy object (GPO) setting should you configure?

- A. Configure use of hardware-based encryption for operating system drives.
- B. Allow access to BitLocker-protected fixed data drives from earlier version of Windows.
- C. Require additional authentication at startup.
- D. Allow network unlock at startup.

Correct Answer: C

Explanation: <http://support.microsoft.com/kb/2855131>

QUESTION 10

You support computers that run Windows 8 Enterprise. Your company protects all laptops by using the BitLocker Network Unlock feature. Some employees work from home.

You need to ensure that employees can log on to their laptops when they work from home. What should you do?

- A. Provide employees their BitLocker PINs.
- B. Ensure that the Trusted Platform Module (TPM) chips in the laptops are version 1.2 or greater.
- C. Enable BitLocker To Go.
- D. Have users run the `Manage-bde.exe -unlock` command before they disconnect from the company network.

Correct Answer: A

In addition to the option of creating a startup key, you have the option of creating a startup personal identification number (PIN). You can create either the startup key or the startup PIN, but not both. The startup PIN can be any number that you choose from 4 to 20 digits in length. The PIN is stored on your computer. You will have to type the PIN each time you start the computer. Reference: <http://windows.microsoft.com/en-US/windows-vista/What-is-a-BitLocker-Drive-Encryption-startup-key-or-PIN> <http://support.microsoft.com/kb/2855131>

QUESTION 11

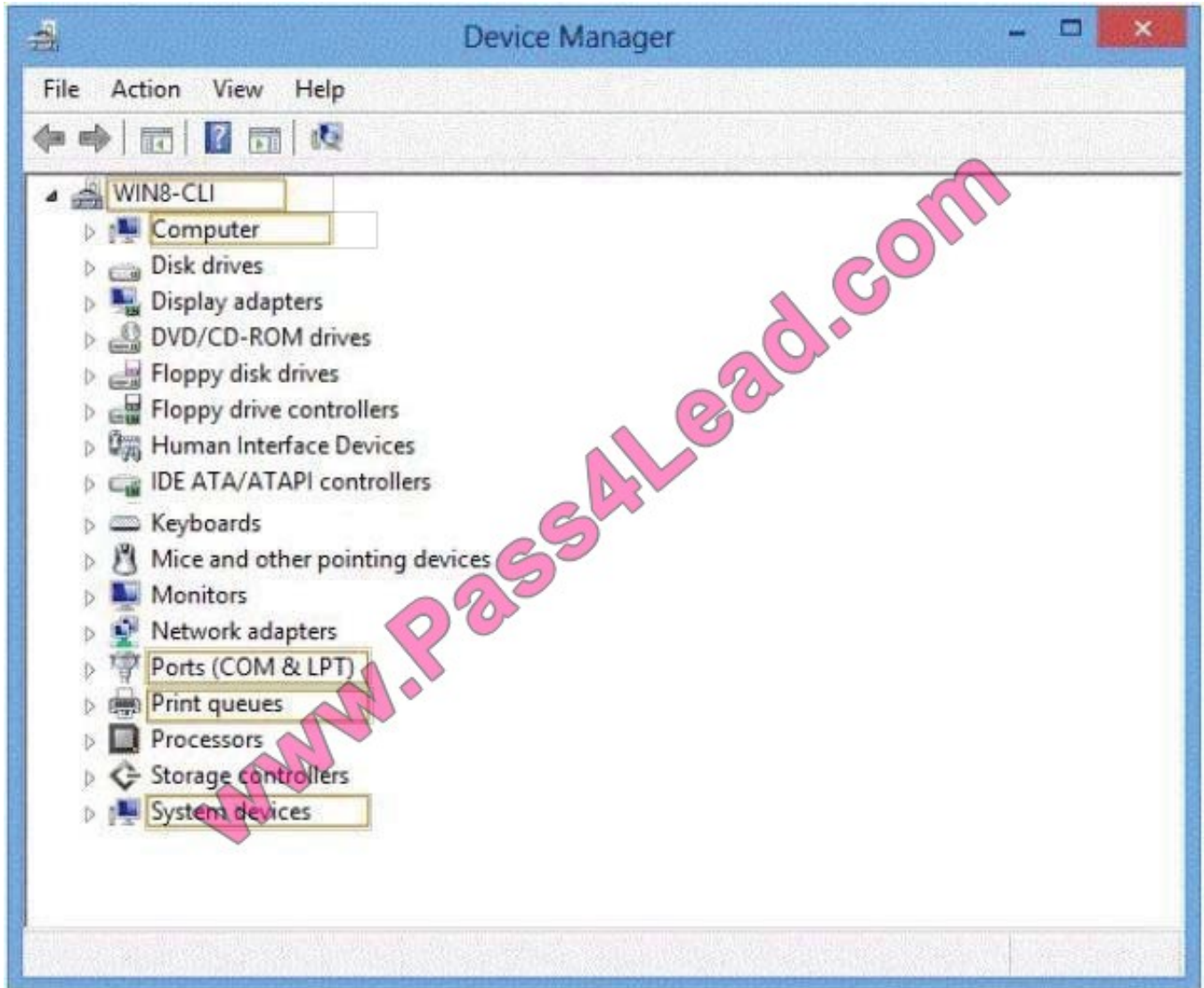
You support computers that run Windows 8 Pro.

You plug a legacy hardware adapter into a computer. You open Device Manager and notice that the legacy hardware adapter is not listed.

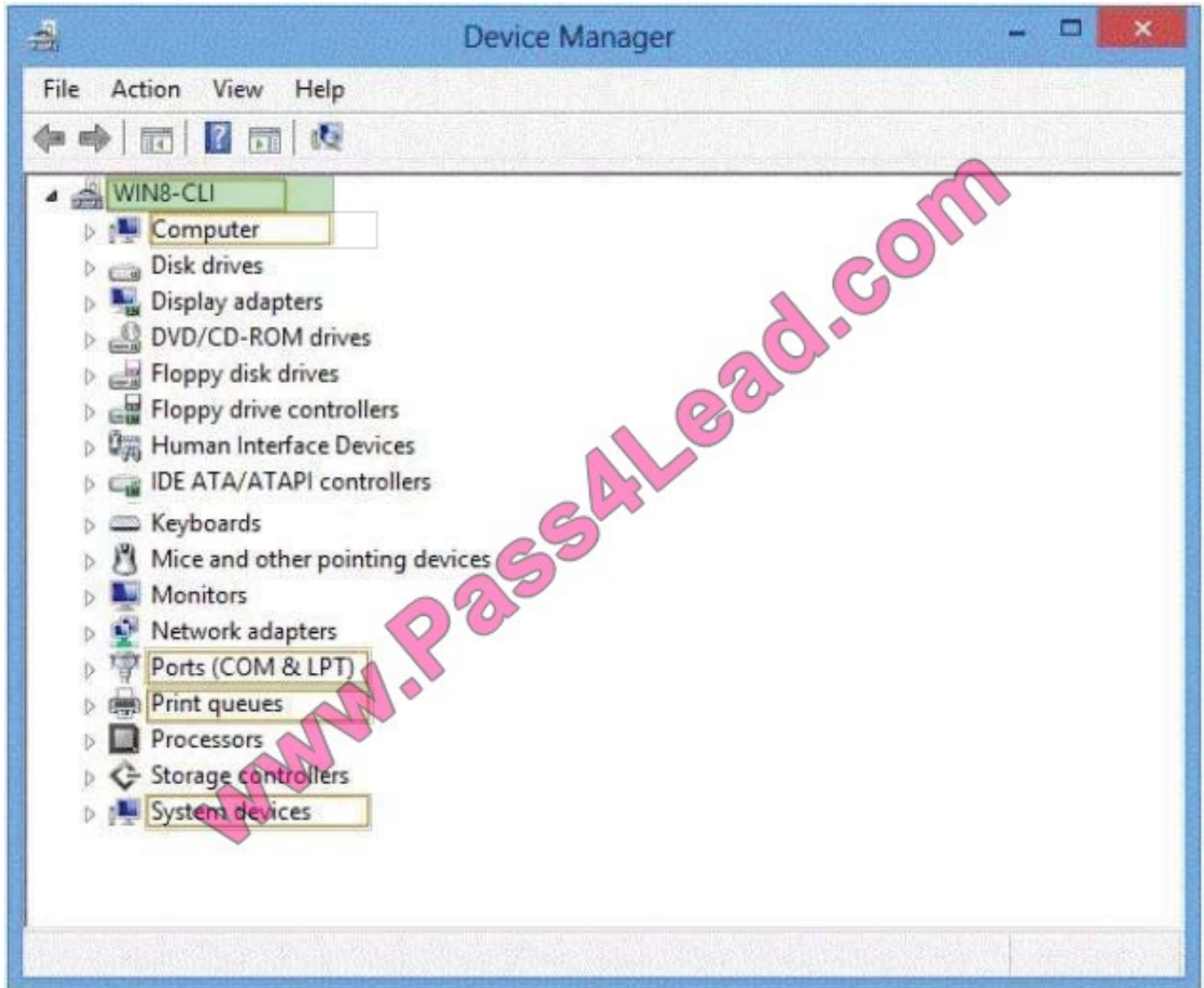
Ycker policies are deployed. Company policy states that AppLocker must be disabr.

To which node should you add the legacy hardware adapter? (To answer, select the appropriate object in the answer area.)

Hot Area:



Correct Answer:



<http://technet.microsoft.com/en-us/library/cc731478.aspx>

QUESTION 12

You have the disk configuration shown in the following exhibit. (Click the Exhibit button.)

The screenshot shows the Windows Disk Management console. At the top, a table lists the volumes. Below this, the details for each disk are shown, including their layout, type, file system, status, capacity, free space, and percentage free.

Volume	Layout	Type	File System	Status	Capacity	Free Spa...	% Free
(C:)	Simple	Basic	NTFS	Healthy (B...	111.69 GB	30.54 GB	27 %
(D:)	Simple	Basic	NTFS	Healthy (S...	100 MB	64 MB	64 %
Data (E:)	Simple	Basic	NTFS	Healthy (P...	908.59 GB	236.17 GB	26 %

Disk	Layout	Type	File System	Status	Capacity	Free Space	% Free
Disk 0	Simple	Basic	NTFS	Healthy (System, Activ...	111.79 GB	100 MB	100 %
Disk 1	Simple	Basic	NTFS	Healthy (Page File, Primary Partition)	931.51 GB	908.59 GB	26 %
Disk 2	Unallocated	Unknown		Unallocated	500.00 GB	500.00 GB	100 %
Disk 3	Unallocated	Unknown		Unallocated	500.00 GB	500.00 GB	100 %

Legend: ■ Unallocated ■ Primary partition

To answer, complete each statement according to the information presented in the exhibit. Each correct selection is worth one point.

Hot Area:

You cannot create the spanned volume until disk 2 and disk 3 are first ...

formattec.
initialized
partitioned.

www.Pass4Lead.com

Disks 2 and 3 are both ... disks.

external
fixed
virtual

Correct Answer:

You cannot create the spanned volume until disk 2 and disk 3 are first ...

formattec.
initialized
partitioned.

www.Pass4Lead.com

Disks 2 and 3 are both ... disks.

external
fixed
virtual

<http://technet.microsoft.com/en-us/library/cc737048%28v=WS.10%29.aspx> New disks appear as Not Initialized. Before you can use a disk, you must first initialize it <http://technet.microsoft.com/en-us/library/cc771486.aspx> The Virtual Hard Disk (VHD) format is a publicly available image format specification that specifies a virtual hard disk encapsulated in a single file, capable of hosting native file systems while supporting standard disk and file operations. <http://technet.microsoft.com/en-us/library/dd851645.aspx>

To Read the [Whole Q&As](#), please purchase the [Complete Version](#) from [Our website](#).

Try our product !

100% Guaranteed Success

100% Money Back Guarantee

365 Days Free Update

Instant Download After Purchase

24x7 Customer Support

Average **99.9%** Success Rate

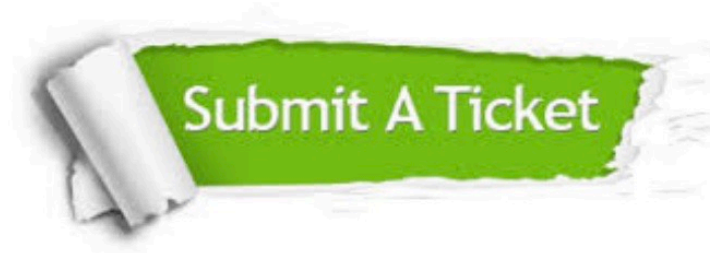
More than **800,000** Satisfied Customers Worldwide

Multi-Platform capabilities - **Windows, Mac, Android, iPhone, iPod, iPad, Kindle**

Need Help

Please provide as much detail as possible so we can best assist you.

To update a previously submitted ticket:



 <p>One Year Free Update Free update is available within One Year after your purchase. After One Year, you will get 50% discounts for updating. And we are proud to boast a 24/7 efficient Customer Support system via Email.</p>	 <p>Money Back Guarantee To ensure that you are spending on quality products, we provide 100% money back guarantee for 30 days from the date of purchase.</p>	 <p>Security & Privacy We respect customer privacy. We use McAfee's security service to provide you with utmost security for your personal information & peace of mind.</p>
---	---	--

Any charges made through this site will appear as Global Simulators Limited.

All trademarks are the property of their respective owners.