

**100%** Money Back  
**Guarantee**

**Vendor:**Riverbed

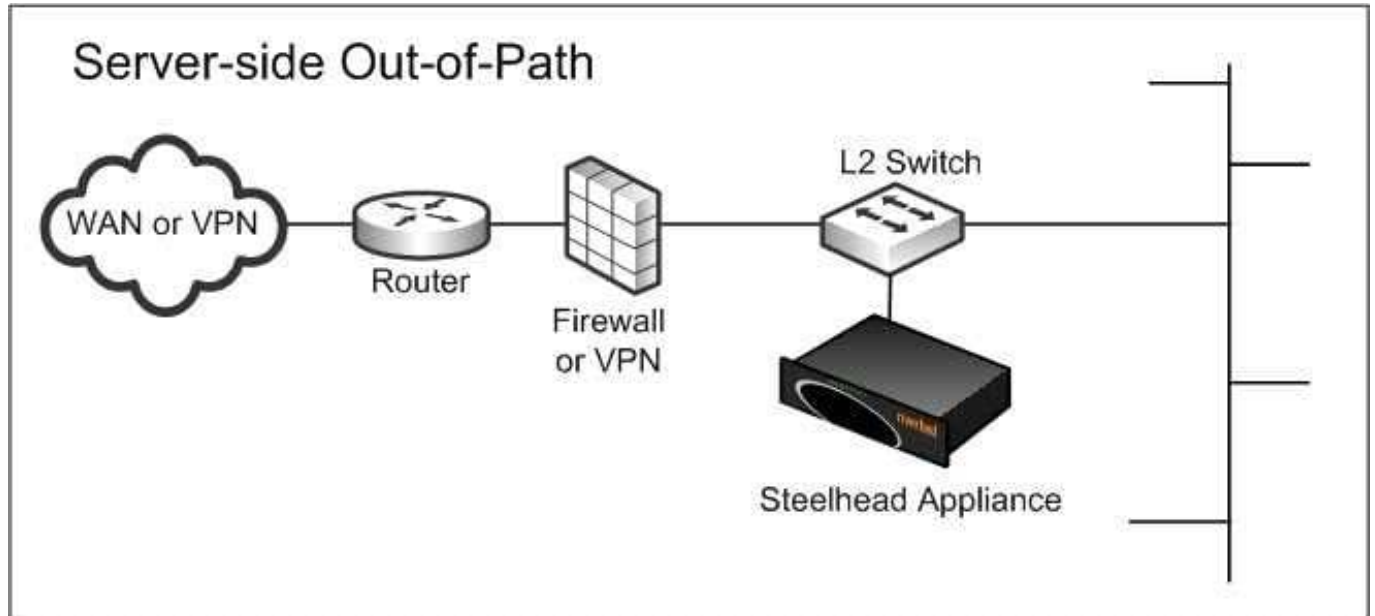
**Exam Code:**830-01

**Exam Name:**RCPE Certified Professional WAN  
Optimization

**Version:**Demo

## QUESTION 1

Refer to the exhibit.



A customer has a server-side out-of-path deployment, and reports that connections from some of their remote branch offices are not being optimized. What is the most likely problem?

- A. A missing fixed-target rule on the server-side Steelhead appliance
- B. A missing fixed-target rule on the client-side Steelhead appliance
- C. The WAN interface is connected to the server-side Steelhead appliance
- D. The LAN interface is connected to the server-side Steelhead appliance
- E. Using port 7810 in the fixed-target rule instead of 7800

Correct Answer: B

## QUESTION 2

A fat pipe is a network that can carry large amounts of data without significantly degrading transmission speed. If you have a fat pipe that is not being fully utilized and you are experiencing WAN congestion, latency, and packet loss as a result of the limitations of regular TCP, which of the following RIOS features will help? (Select 2)

- A. Enable Forced Burst TCP (FB-TCP)
- B. Enable HighSpeed TCP (HSTCP)
- C. Disable admission control

- D. Lower the Advanced Security Checkflow Parameter (ASCP)
- E. Enable Maximum TCP (MX-TCP)
- F. Enable disk encryption

Correct Answer: BE

---

### QUESTION 3

What port number is configured on a Steelhead appliance to communicate to the TACACS+ server?

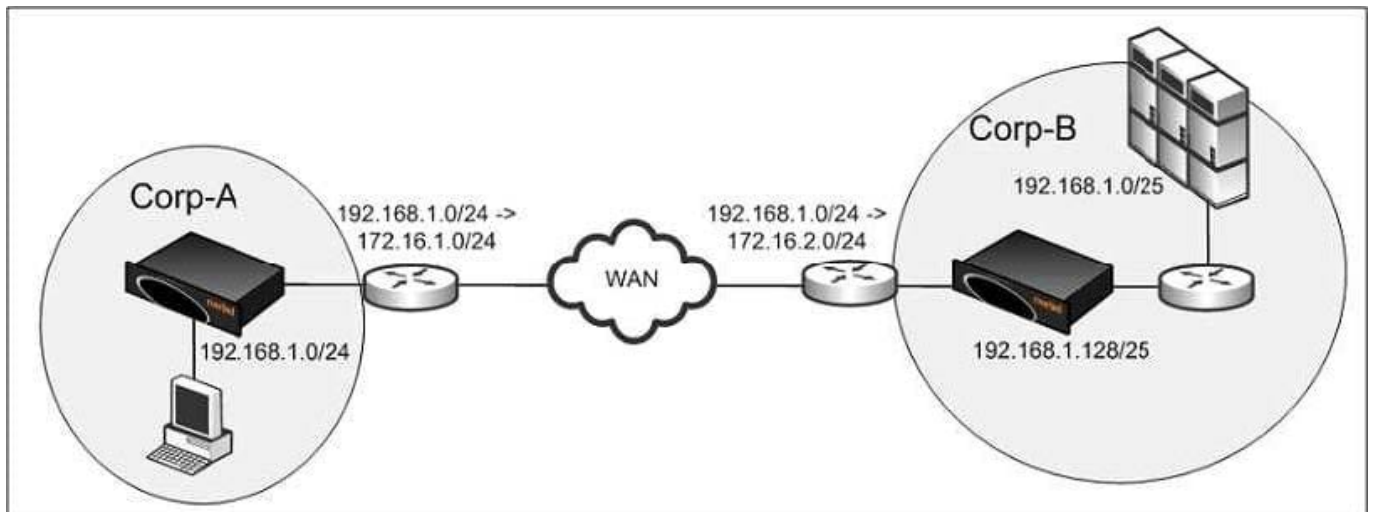
- A. 1645
- B. 1646
- C. 1812
- D. 389
- E. 49

Correct Answer: E

---

### QUESTION 4

Refer to the exhibit.



Corp-A and Corp-B have overlapping address space and therefore the network administrator implemented NAT to overcome this. Users from Corp-A NAT to 172.16.1.0/24 and users from Corp-B NAT to 172.16.2.0/24. Users in Corp-A use the destination address of 172.16.2.0/24 to access the resources in Corp-B. The servers in Corp-B use the client IP for authentication. You deploy the Steelhead appliance using the default WAN visibility mode but noticed all the connections are passed-through. What is the likely problem?

- A. When the Steelhead appliance in Corp-B opens the outer connection, it is using the source IP of

172.16.2.x instead of 192.168.1.x

B. On the Steelhead appliance in Corp-B, there is a missing static route for the 192.168.1.0/25 network

C. On the Steelhead appliance in Corp-A, there is a missing static route for the 172.16.2.0/24 network

D. When the Steelhead appliance in Corp-B opens the outer connection, it is using the source IP of

192.168.1.x instead of 172.16.1.x

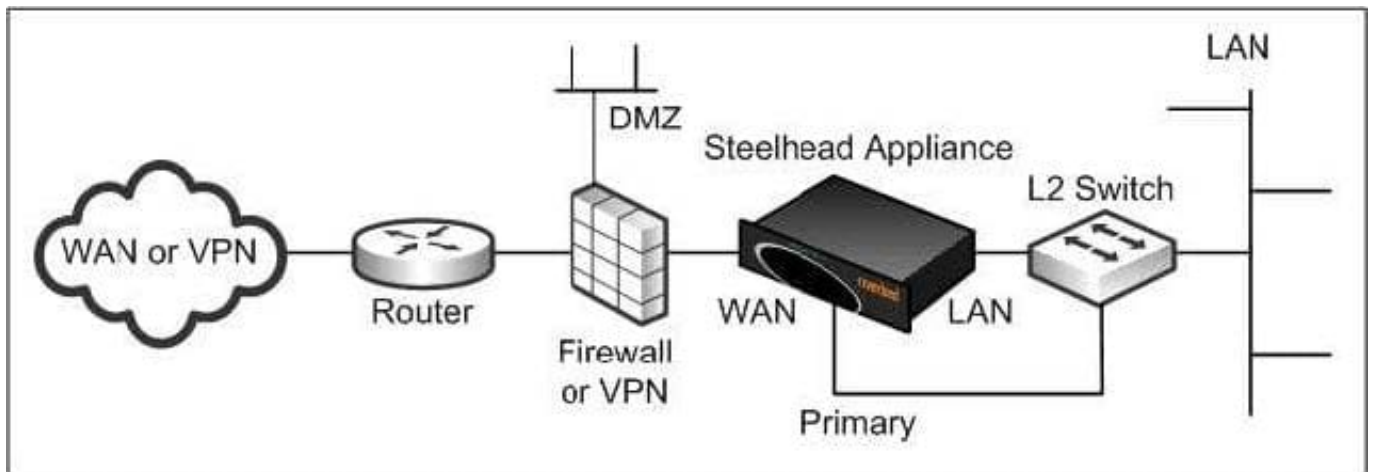
E. None of the above

Correct Answer: D

---

### QUESTION 5

A customer wants to optimize traffic from remote VPN sites to DMZ servers in the data center shown in the accompanying exhibit.



The customer would also like to deploy their data center Steelhead appliance in a way that would allow them to keep transparency to the LAN servers, and allow the LAN servers to initiate optimized connections to remote sites. The current network architecture can satisfy these requirements by using which following deployment method?

A. In-path

B. Out-of-path

C. WCCP/PBR

D. Hybrid Mode

E. C and D

Correct Answer: D

---

### QUESTION 6

Which of the following are examples of Security policies on the CMC appliance? (Select 3)

- A. SSL Peering
- B. SSL Ciphers
- C. User Permissions
- D. Web Settings
- E. RADIUS

Correct Answer: CDE

---

#### **QUESTION 7**

Can you optimize FTP using Steelhead Mobile?

- A. Yes, this is possible on all FTP modes
- B. When using active FTP
- C. When using passive FTP
- D. It is not possible to optimize FTP traffic
- E. Only when there is no firewall enabled

Correct Answer: C

---

#### **QUESTION 8**

To increase the high availability of a site at a remote office, you decided to install a second Steelhead appliance as an active/active serial cluster. However, after installing the second Steelhead appliance at the remote site, users started complaining about slow access to the data center. You have verified that this is not a duplex issue. At the data center location all users access the Internet which pass- through the Steelhead appliances. What is the most likely problem?

- A. SMB Signing
- B. Oplock issue
- C. The serial cluster Steelhead appliances are peering to each other
- D. Simplified routing was enabled on the secondary Steelhead appliance
- E. The datastore on the Steelhead appliances are wrapping

Correct Answer: C

---

#### **QUESTION 9**

Which of the following are configurable in the CMC appliance Jump-Start Wizard? (Select 4)

- A. IP address
- B. Netmask
- C. Steelhead appliance model number
- D. Default gateway
- E. Administrator password

Correct Answer: ABDE

---

#### QUESTION 10

What should you do when you receive the following message?

```
[mgp1server WARN] 23355 [10.36.18.1:15:1712:0.0.0.1:17:8080] Resetting.
```

- A. Nothing. This is a warning message which means that the Steelhead appliance is resetting an internal state regarding this connection and it should not affect user performance.
- B. Switch off the Steelhead appliance
- C. Create a specific pass-through rule to bypass the above source and destination hosts
- D. Reload the Steelhead appliance

Correct Answer: A

---

#### QUESTION 11

Why should you use promiscuous mode on each in-path virtual NIC for Virtual Steelhead appliance? (Select 2)

- A. For LAN/WAN Virtual NICs to intercept traffic not destined for the virtual machine
- B. This configuration is mandatory for traffic optimization
- C. Promiscuous mode is not required
- D. Only verbose mode should be configured
- E. Only regular mode should be configured

Correct Answer: AB

---

#### QUESTION 12

In a serial cluster deployment of Interceptor appliances, which interfaces are connected from one Interceptor appliance to another Interceptor appliance assuming they are connected back to back?

- A. LAN0\_0 to LAN0\_1
- B. WAN0\_0 to WAN0\_0
- C. WAN0\_0 to LAN0\_0
- D. LAN0\_0 to LAN0\_0

Correct Answer: C