

**100%** Money Back  
**Guarantee**

**Vendor:**EMC

**Exam Code:**E20-005

**Exam Name:**Backup Recovery Systems and  
Architecture Exam

**Version:**Demo

### QUESTION 1

Which software component of a backup application sends media metadata to the backup server?

- A. Storage node
- B. Client
- C. NetWorker Management Console
- D. Application server

Correct Answer: A

---

### QUESTION 2

A customer has an existing NAS implementation that is backed up in a local two-way configuration. The customer is concerned that the attached tape drive is stopping and starting frequently during the backup. However, they see benefit in the local two-way configuration and want to keep it.

Which solution would you recommend to address their concern?

- A. VBB
- B. DDS
- C. DAR
- D. NDMP2D

Correct Answer: D

---

### QUESTION 3

Which type of backup should be used to create a backup copy offline without disrupting I/O operations on a production volume?

- A. Cumulative backup
- B. Incremental backup
- C. Full backup
- D. Synthetic full backup

Correct Answer: D

---

### QUESTION 4

In Volume Shadow Copy Service, what is the role of the I/O interceptor?

- A. Copies data from source to virtual volume before the write to source volume is allowed
- B. Copies data from source to virtual volume after the write to source volume is allowed
- C. Leaves the source volume unchanged and writes to virtual volume
- D. Writes new data to both source volume and virtual volume

Correct Answer: A

---

#### **QUESTION 5**

What is an example of a PCI connection?

- A. Parallel interface between a disk and the controller card
- B. Interconnection between a CPU and network card
- C. Serial connection between a disk and the controller card
- D. Interconnection between a tape drive and a computer

Correct Answer: B

---

#### **QUESTION 6**

What is an advantage of source-based deduplication over target-based deduplication?

- A. Reduced network bandwidth requirement
- B. Faster replication
- C. Faster recovery
- D. Reduced client resource requirement

Correct Answer: A

---

#### **QUESTION 7**

A business has a recovery point objective (RPO) of nine hours. What does this RPO mean in the event of a disaster?

- A. No more than nine hours of production data can be lost
- B. Restore from backup must occur within nine hours
- C. Production must be resumed within nine hours
- D. A backup copy of the production data must be obtained within nine hours

Correct Answer: A

---

### QUESTION 8

What is an advantage of performing a hot database backup over a cold backup?

- A. The database is accessible to users.
- B. Backups are faster.
- C. There is no impact on the database.
- D. Network bandwidth use is reduced.

Correct Answer: A

---

### QUESTION 9

Which component identifies redundant subfile data at the source when a source-based deduplication method is used?

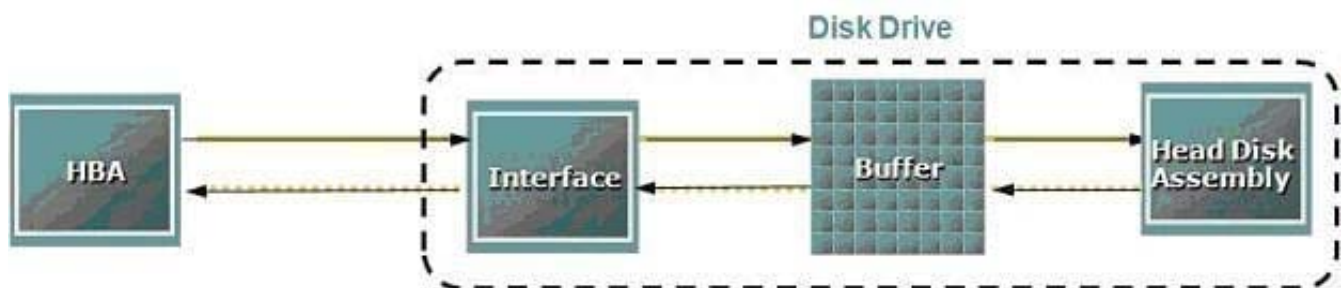
- A. Client software agent
- B. Deduplication node
- C. Backup server
- D. Storage node

Correct Answer: A

---

### QUESTION 10

Refer to the exhibit.



When determining disk drive performance, between which two components is the internal transfer rate measured?

- A. Interface and buffer
- B. HBA and interface

- C. Buffer and head disk assembly
- D. Interface and head disk assembly

Correct Answer: C

---

**QUESTION 11**

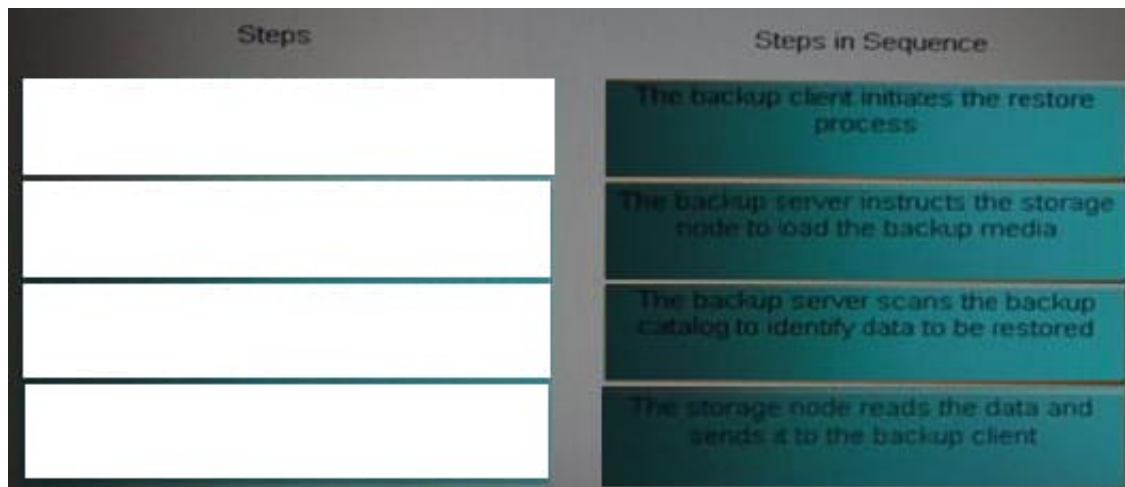
What data is transmitted on the private backup network for the NDMP 3-way backup method?

- A. Backup data
- B. Metadata
- C. NDMP control data
- D. Management data

Correct Answer: A

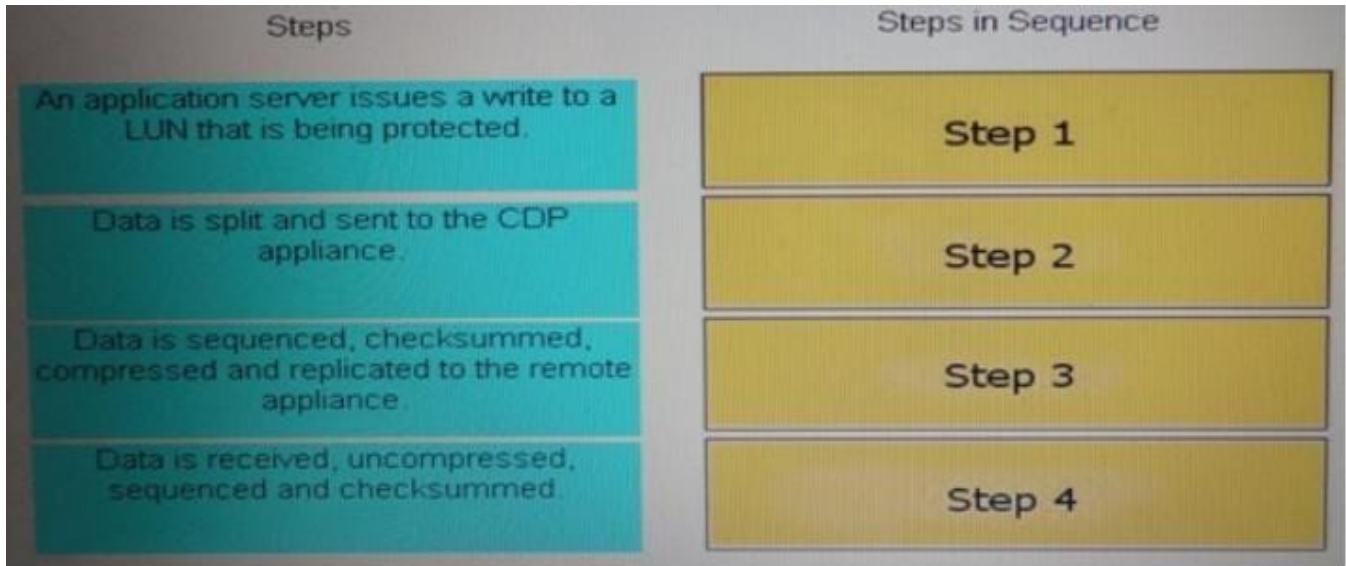
---

**QUESTION 12**



What is the data flow from the host to the production volume during the CDP remote protection process?

Select and Place:



Correct Answer:

Steps


Steps in Sequence

Data is split and sent to the CDP appliance.

An application server issues a write to a LUN that is being protected.

Data is sequenced, checksummed, compressed and replicated to the remote appliance.

Data is received, uncompressed, sequenced and checksummed.

