

100% Money Back
Guarantee

Vendor:EMC

Exam Code:E20-593

Exam Name:Backup and Recovery Implementation
Exam

Version:Demo

QUESTION 1

What is a function of the nsrwatch program?

- A. View active sessions
- B. Generate online reports
- C. View all NetWorker Servers
- D. View device configuration changes

Correct Answer: A

QUESTION 2

In EMC NetWorker, what happens when the high watermark is reached on an AFTD being managed by the stage resource?

- A. Automatically move save sets to another media
- B. Continuously stage save sets until all the save sets are moved
- C. Automatically clone save sets to another media
- D. Automatically send warning messages to the Administrator

Correct Answer: A

QUESTION 3

EMC NetWorker customer has an autochanger with four LTO-3 tape drives, and one advanced file type device. All devices are configured on a single EMC NetWorker server. Two drives are dynamically shared with an EMC NetWorker storage node. One of the shared drives suffers a mechanical failure and is disabled.

How many nsrmmid processes are now running on the EMC NetWorker server?

- A. 5
- B. 3
- C. 6
- D. 1

Correct Answer: A

QUESTION 4

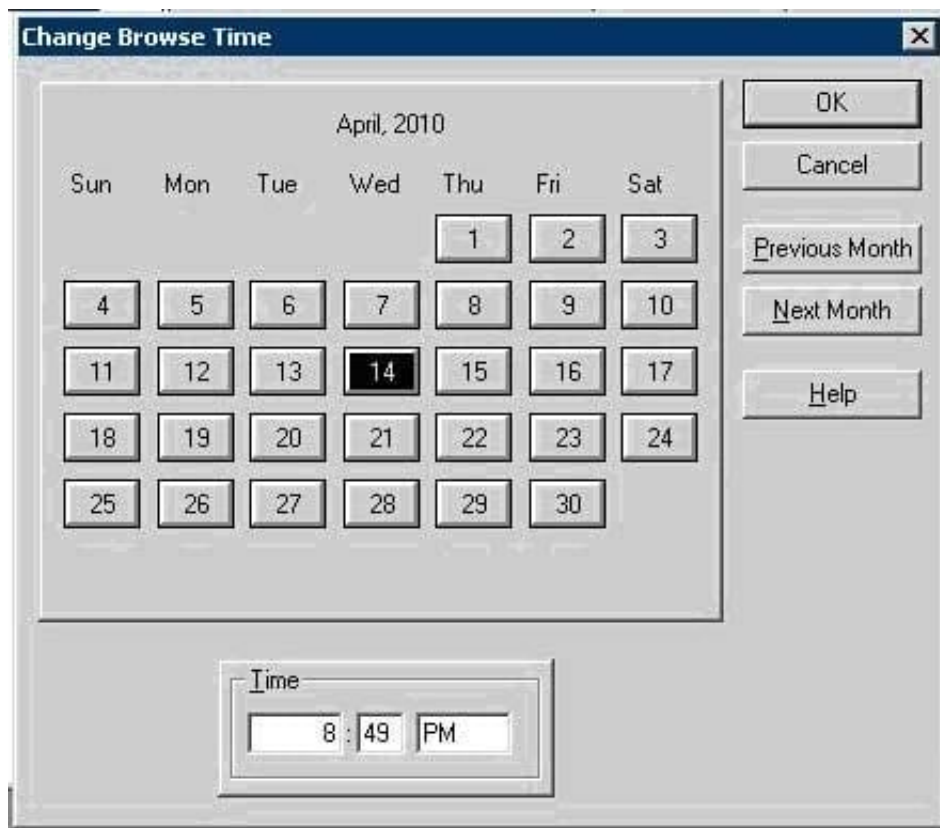
What is the command to manually start the EMC NetWorker processes on a Solaris server?

- A. networker start
- B. ./networker
- C. nsradmin
- D. nsrd

Correct Answer: A

QUESTION 5

Refer to the exhibit.



What is the purpose of the Change Browse Time window when performing a recover in EMC NetWorker User?

- A. View the Client File Index as it was at a specific point in time
- B. Display all recoveries from that client
- C. Determine the time and date for the volume used for the backup
- D. Show the time of the last recovery

Correct Answer: A

QUESTION 6

What is an EMC NetWorker consolidated backup?

- A. A level 1 backup which is then merged with the save set's last full backup creating a new full backup.
- B. A level 9 backup which is then merged with the save set's last full backup creating a new full backup.
- C. A level Full backup which is then merged with the save set's last full backup creating a new full backup.
- D. An Incremental level backup which is then merged with the save set's last full backup creating a new full backup.

Correct Answer: A

QUESTION 7

What is the command line alternative to perform a query and generate a report similar to the reports generated within the EMC NetWorker Management Console (NMC)?

- A. gstclreport
- B. mminfo
- C. savefs
- D. ebreport backup

Correct Answer: A

QUESTION 8

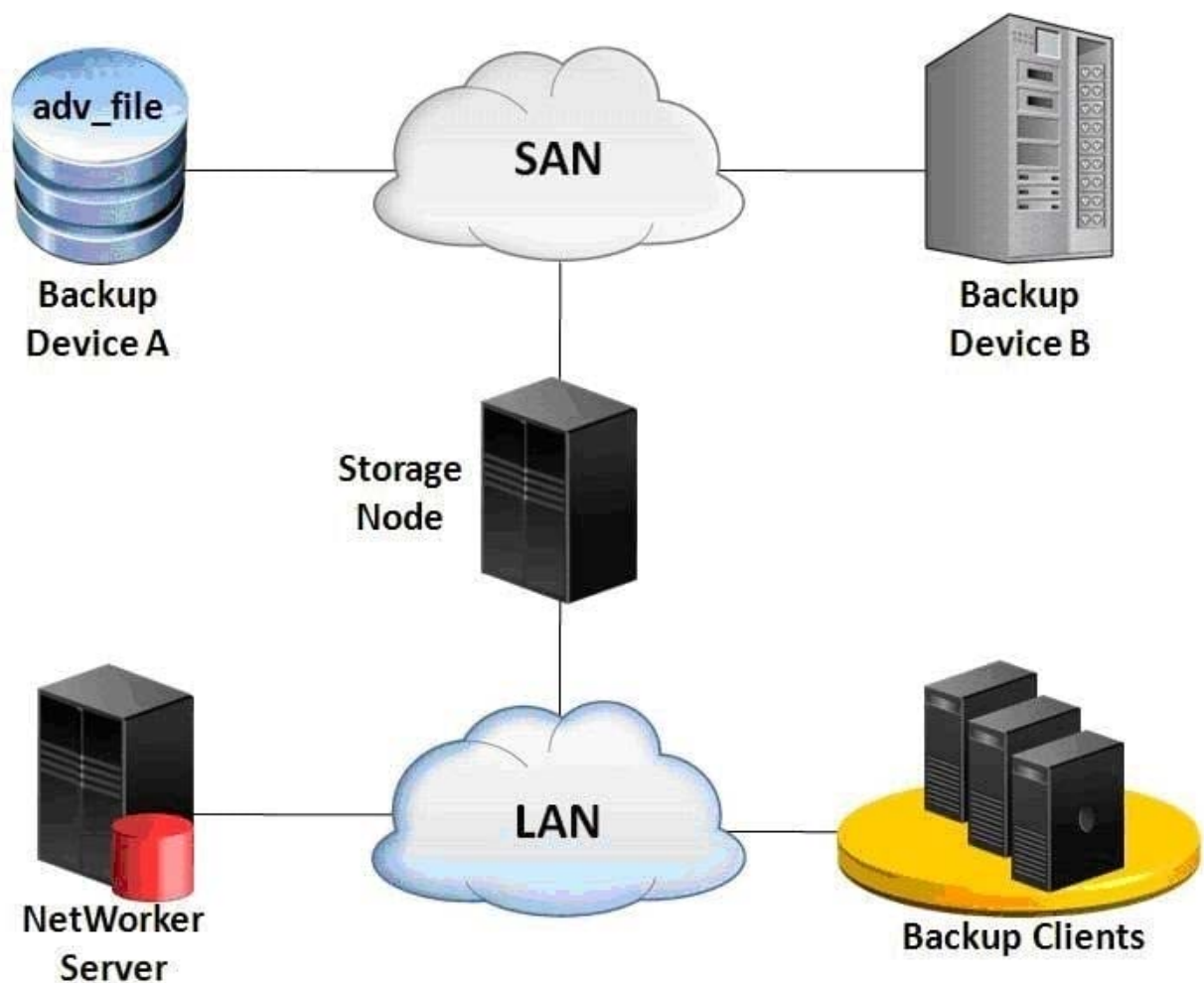
Which EMC NetWorker command line utility is used to view, create, delete, and modify resources?

- A. nsradmin
- B. nsraddadmin
- C. nsrim
- D. winworkr

Correct Answer: A

QUESTION 9

Refer to the exhibit.



A storage administrator configures an EMC NetWorker staging policy to move save sets from backup Device A to backup Device B. A restore session is started and requires save sets that were staged to Device B.

What is the data flow in this recovery?

- A. Data is reconstructed from Device B to Device A through the storage node and then sent back to the client.
- B. Data goes from Device B through the storage node to the NetWorker server and then to the client.
- C. Data goes from Device B through the storage node and then to the client.
- D. Data is restored to the storage node and copied to the client.

Correct Answer: C

QUESTION 10

Click the Calculator icon in the upper left-hand corner.

In an EMC NetWorker environment, the customer is backing up 7.5 TB per day. The 7.5 TB is comprised of 750 million files. According to EMC best practices, approximately how large will the Client File Index (CFI) be?

A. 167 GB

B. 70 GB

C. 209 GB

D. 307 GB

Correct Answer: A

QUESTION 11

A Dell EMC storage administrator has configured a client snapshot backups using NetWorker Snapshot Management. The backup completed successfully and the administrator is now ready to restore the data.

Which type of restore will destroy all existing data on the target application volume?

A. Snapshot

B. Rollback

C. Restore from rollover

D. Directed

Correct Answer: B

Reference: <https://www.emc.com/collateral/TechnicalDocument/docu57700.pdf>(page 17)

QUESTION 12

When creating an EMC NetWorker application-based snapshot, in what order are the steps performed?

A. 1. Freeze application

2.

Flush buffers

3.

Take snapshot

4.

Thaw application

B. 1. Flush buffers

2.

Freeze application

3.

Take snapshot

4.

Thaw application

C. 1. Freeze application

2.

Take snapshot

3.

Commit writes

4.

Thaw application

D. 1. Commit writes

2.

Freeze application

3.

Take snapshot

4.

Thaw application

Correct Answer: A