

**100%** Money Back  
**Guarantee**

**Vendor:**EMC

**Exam Code:**E20-690

**Exam Name:**VNX Solutions Specialist Exam for  
Platform Engineers

**Version:**Demo

**QUESTION 1**

Dump files are needed from a Storage Processor. Which naviseccli managefiles command option will accomplish this?

- A. -retrieve
- B. -list
- C. -list and -retrieve
- D. No option needed

Correct Answer: A

---

**QUESTION 2**

What is VIA used to configure?

- A. VNX File and Unified systems
- B. VNX File systems only
- C. VNX Unified systems only
- D. VNX Gateways

Correct Answer: A

---

**QUESTION 3**

Which component of ESRS-IP solution is responsible for event-based detection and alert notification?

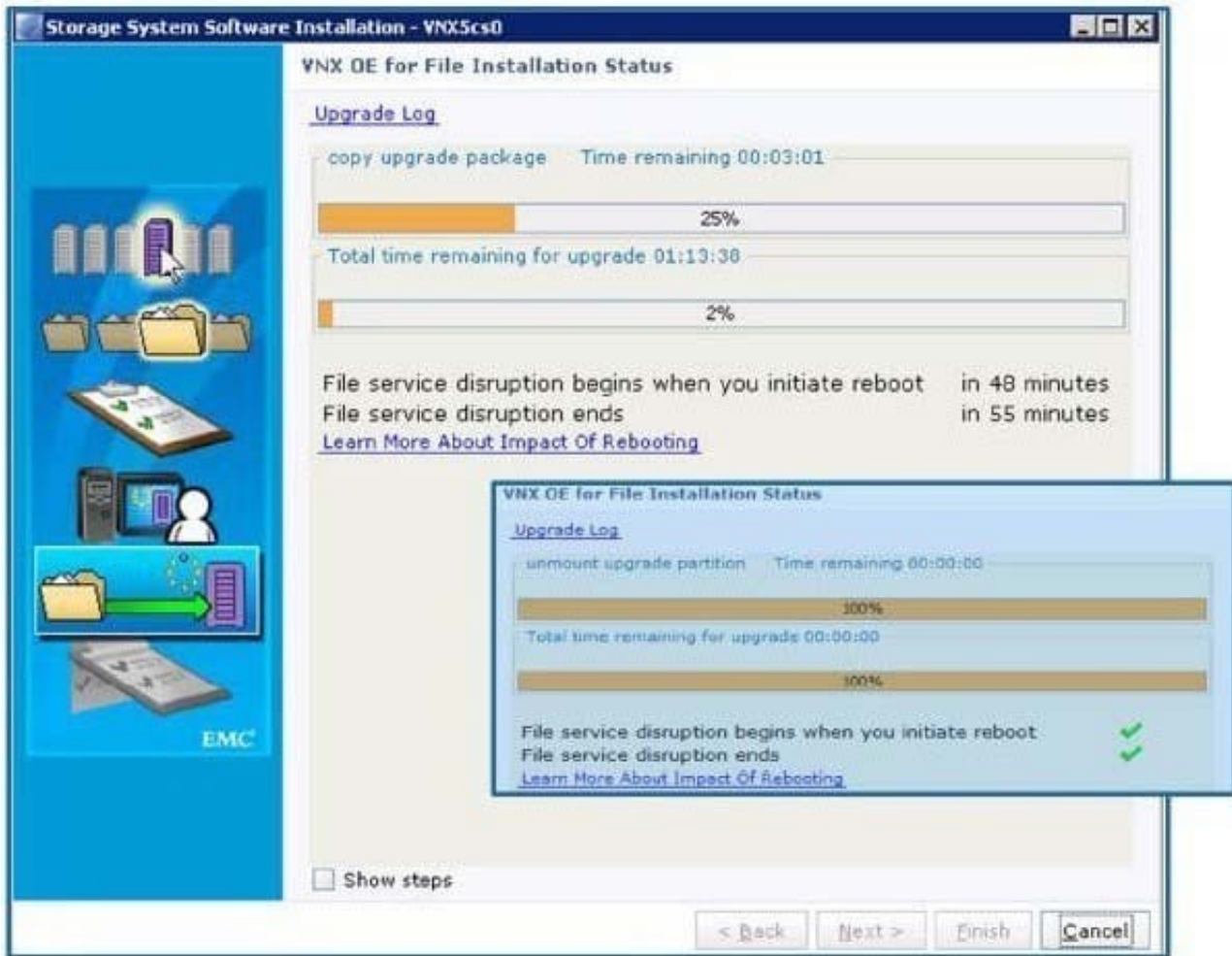
- A. UDoctor
- B. Unisphere Agent
- C. Unisphere CLI
- D. ConnectEMC

Correct Answer: A

---

**QUESTION 4**

Refer to the exhibit.



You are upgrading a VNX OE for File and a VNX OE for Block storage system in the same operation. You are currently in the VNX OE for File upgrade and accidentally hit the Cancel button. What happens after re-launching the upgrade in USM?

- A. Upgrade will resume at the step where it was canceled
- B. Upgrade will restart from the beginning
- C. Upgrade will fail and support must be called to continue
- D. Upgrade will fail; must continue through the CLI

Correct Answer: A

#### QUESTION 5

Which script is run to verify the status of the VNX gateway after installation?

- A. nas\_checkup
- B. nas\_storage
- C. nas\_summary

D. nas\_catalog

Correct Answer: A

---

### QUESTION 6

Refer to the exhibit.



What happens when the user selects the indicated option within the VNX Procedure Generator?

- A. A PDF document is generated and displayed to the user for the associated activity.
- B. A Word document is both displayed and emailed to the user for the associated activity.
- C. A PDF document is produced with a link to a site where the user can build User Personalized Documentation.
- D. A Word document is produced with a link to a site where the user can build User Personalized Documentation.

Correct Answer: D

---

### QUESTION 7

You are planning an upgrade to a VNX Unified system. You need to check for front-end compatibility. What does the term "front-end" refer to in this context?

- A. NAS clients in the production TCP/IP network
- B. Connections to the LCCs, DAEs, and physical drives
- C. Storage subsystem
- D. Fibre Channel / iSCSI connection to the hosts

Correct Answer: A

---

#### **QUESTION 8**

What is the recommended corrective action to take if a mistake was made during initialization of a VNX Unified array?

- A. Reset the VNX for VIA
- B. Reboot the Data Movers
- C. Rerun VIA
- D. Reboot Control Station 0

Correct Answer: A

---

#### **QUESTION 9**

You are performing a non-disruptive upgrade. However, end-users are reporting that they cannot access data while you are performing the operation. What could be the issue?

- A. Not enough NDU delay time configured
- B. VNX only has a single storage processor with NDU
- C. NDU delay time is too long
- D. One of the storage processors is failing and preventing failover

Correct Answer: A

---

#### **QUESTION 10**

You are installing an ESRS IP Client to monitor a VNX Block array. You also want to connect remotely to SP A and SP B over the ESRS platform. What needs to be done first?

- A. Add the ESRS workstation IP address to the RemotelyAnywhere access restriction list on the array\\'s SP A or SP B
- B. Add the SP A and SP B IP addresses to the ESRS workstation host file.
- C. Add the ESRS workstation IP address to the administration access restriction list.
- D. Add the SP A and SP B IP addresses to the RemotelyAnywhere access restriction list on the array\\'s SP A or SP B

Correct Answer: A

---

### QUESTION 11

On a VNX Unified storage system, which file components are responsible for system management, access and failover?

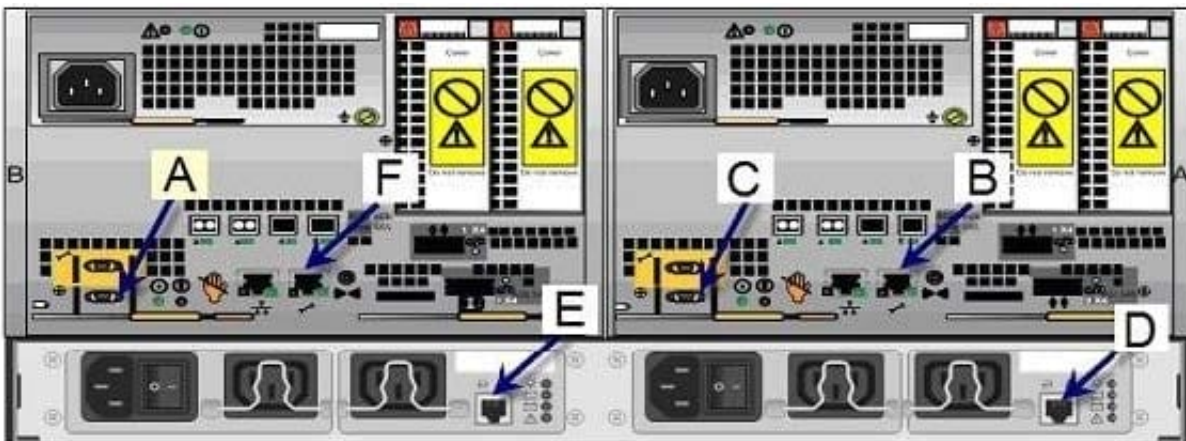
- A. Control Stations 0 and 1; Data Movers 2 and 3
- B. Control Station 0; Data Mover 2
- C. Control Station 0; SPA, and SPB; first DAE
- D. DPE; Data Movers 2 and 3; SPA

Correct Answer: A

---

### QUESTION 12

Refer to the exhibit.



A service engineer needs to collect logs from SP B due to an unscheduled reboot. Which letter indicates the location where the service engineer would connect to SP B?

- A. F
- B. B
- C. E
- D. C

Correct Answer: A