

100% Money Back
Guarantee

Vendor: HP

Exam Code: HP0-S25

Exam Name: Implementing ProLiant ML/DL/SL Servers

Version: Demo

Topic 1, Volume A

QUESTION NO: 1

Which feature is exclusive to the ProLiant 100 Series family?

- A. BIOS Serial Console
- B. Automatic Server Recovery (ASR-2)
- C. Watchdog Timer
- D. Web-based Enterprise Management (WBEM)

Answer: C

Explanation:

QUESTION NO: 2

What is required to enable RAID 6+0 on the HP Smart Array P411 Controller? (Select two.)

- A. six enabled ports
- B. Smart Array Advanced Pack
- C. minimum of six disks
- D. minimum of four disks
- E. battery kit for installed BBWC

Answer: B,E

Explanation:

QUESTION NO: 3

Which actions can HP SIM take on a trap sent by a ProLiant server? (Select two.)

- A. send an email to the administrator
- B. call the administrator phone number
- C. launch a script
- D. collect a "survey" file of the server and send it to the HP Support team

Answer: A,C

Explanation:

QUESTION NO: 4

Which protocols can HP SIM use for the initial data collection? (Select two.)

- A. SNMP
- B. ICMP
- C. SMTP
- D. DMI

Answer: A,D

Explanation:

QUESTION NO: 5

Which protocol provides system management data through the Windows Management Instrumentation (WMI) framework for ProLiant servers?

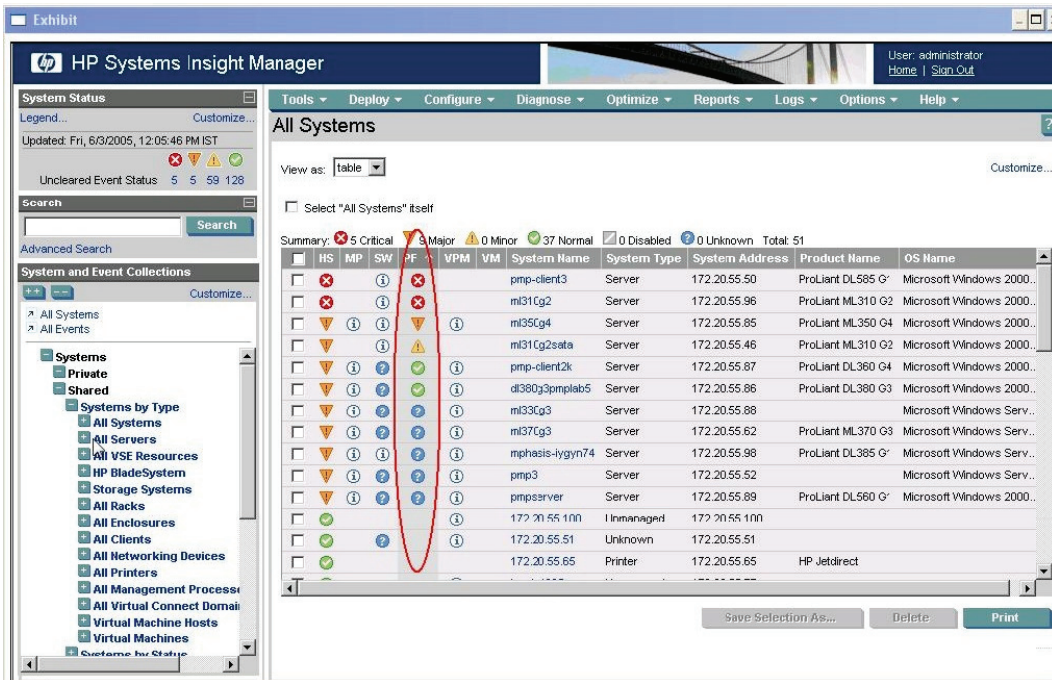
- A. WBEM
- B. SNMP
- C. HTTP
- D. SSH

Answer: A

Explanation:

QUESTION NO: 6

Click the Exhibit button.



You are viewing systems on the CMS of HP Systems Insight Manager. What is indicated by the presence of the PF column?

- A. VMM is installed.
- B. PMP is installed.
- C. VCRM is installed.
- D. IPM is installed.

Answer: B

Explanation:

QUESTION NO: 7

What is a new feature of the IPv6 addressing scheme?

- A. a network prefix that enables routing decisions at the network layer
- B. a network host that specifies a particular device in the network
- C. an anycast address defined to send a packet to any one of a group of nodes
- D. address space allocation, based on an octet system

Answer: C

Explanation:

QUESTION NO: 8

Your customer needs to be able to split and recombine mirrors on his DL380 G6 Server. What must be done to enable this feature?

- A. Enable the Mirror Splitting in Offline Mode option in ACU.
- B. Activate the Smart Array Advanced Pack (SAAP) by installing the activation license key in ORCA.
- C. Activate the Smart Array Advanced Pack (SAAP) by installing the activation license key in RBSU.
- D. Enable the Advanced Capacity Expansion option in ACU.

Answer: B

Explanation:

QUESTION NO: 9

You have just added two internal drives to your ProLiant server. Which utilities should you use to allocate the raw space to the Smart Array volume and extend the Windows NTFS partition to use all the new space? (Select two.)

- A. diskpart.exe
- B. chkdsk.exe
- C. HP Storage Resource Manager
- D. ACU
- E. ORCA

Answer: A,D

Explanation:

QUESTION NO: 10

Which tool can be used to help optimize processor performance before and after modifications are implemented?

- A. Firmware Management CD
- B. ProLiant Processor Performance Utility
- C. HP Insight Performance Management module
- D. Insight Control Power Capping

Answer: C

Explanation:

QUESTION NO: 11

Which tool enables reactive and proactive remote support to improve the availability of HP-supported servers and associated storage systems in a data center, relies on several HP components like Insight Management Agent and uses SNMP or WBEM for communication?

- A. HP Insight Remote Support Advanced
- B. HP Remote Diagnostic Monitor
- C. HP Systems Insight Manager
- D. Proactive 24 Care Pack service

Answer: A

Explanation:

QUESTION NO: 12

When deploying an RDP solution, which network component must be installed and properly configured?

- A. SNMP
- B. WBEM
- C. SMTP
- D. DHCP

Answer: D

Explanation:

QUESTION NO: 13

When purchasing the ProLiant Extended Warranty Care Pack, which features are included in addition to the Base Warranty features? (Select three.)

- A. software support
- B. committed response times
- C. hardware protection from manufacturer defect
- D. flexible support levels

E. parts and labor

Answer: A,B,D

Explanation:

QUESTION NO: 14

Which components are covered under the HP Pre-failure Warranty? (Select three.)

A. power supplies

B. host bus adapters

C. processors

D. SCSI drives

E. fans

F. memory

Answer: C,D,F

Explanation:

QUESTION NO: 15

Which HP tool can be used to expand an existing array online?

A. ROM-Based Setup Utility (RBSU)

B. Option ROM Configuration for Arrays (ORCA)

C. System Configuration Utility (SCU)

D. HP System Management Homepage (SMH)

E. Array Configuration Utility (ACU)

Answer: E

Explanation:

QUESTION NO: 16

A second Smart Array Controller has been added to a ProLiant server. What should you check in the ROM-Based Setup Utility?

A. Removable Flash Media Boot Sequence

- B. PCI Express 2.0 support
- C. Standard Boot Order
- D. Boot Controller Order

Answer: D

Explanation:

QUESTION NO: 17

A customer wants you to configure his ProLiant G6 for maximum power saving. What is the recommended way for you to accomplish this?

- A. Plug in only one power cord, if the system is equipped with two power supplies.
- B. Disable Hyperthreading.
- C. Choose the "Minimum Power Usage" - profile in RBSU.
- D. Choose the "Minimum Power Management" - profile in Control Panel.

Answer: C

Explanation:

QUESTION NO: 18

If the MTBF of a single drive is 200,000 hours, how many hours is the MTBF of a five drive array?

- A. 40,000 hours
- B. 50,000 hours
- C. 80,000 hours
- D. 200,000 hours
- E. 1,000,000 hours

Answer: A

Explanation:

QUESTION NO: 19

Which type of disk drives are supported in an MSA 2000fc?

- A. FATA drives

- B. Ultra320 SCSI drives
- C. SAS drives
- D. FC drives

Answer: C

Explanation:

QUESTION NO: 20

Where can you locate a SmartStart CD?

- A. HP Insight Foundation Suite for ProLiant
- B. HP Insight software
- C. SmartStart Scripting Toolkit
- D. Insight Rapid Deployment software

Answer: A

Explanation:

QUESTION NO: 21

Which tools can be used to perform the initial server configuration on a ProLiant ML 300-series server on which you will install SUSE Linux Enterprise Server 11? (Select two.)

- A. Insight Control Advisor
- B. ROM-Based Setup Utility
- C. Extensible Firmware Interface
- D. HP Smart Setup
- E. Option ROM Configuration for Arrays

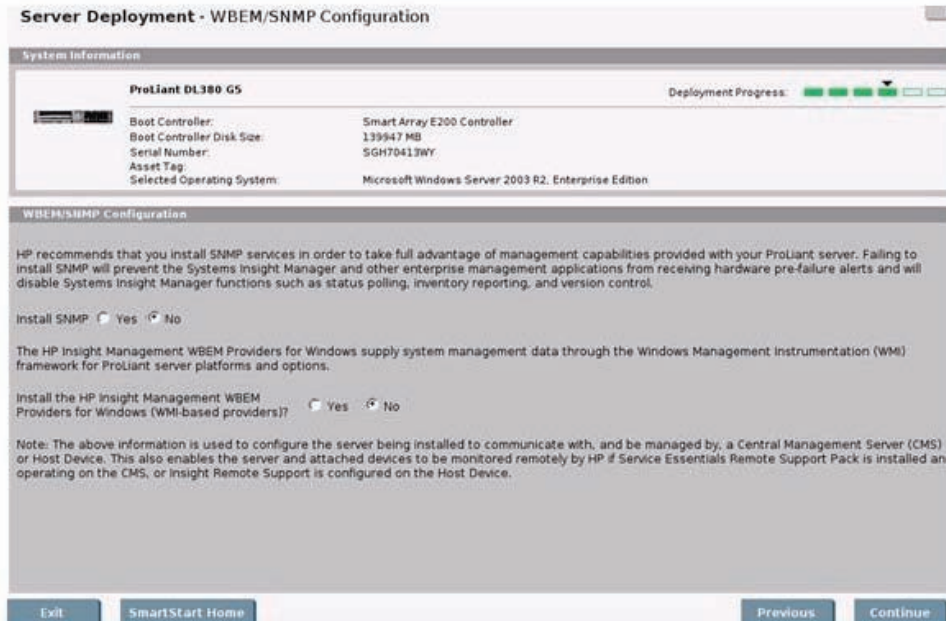
Answer: B,E

Explanation:

QUESTION NO: 22 HOTSPOT

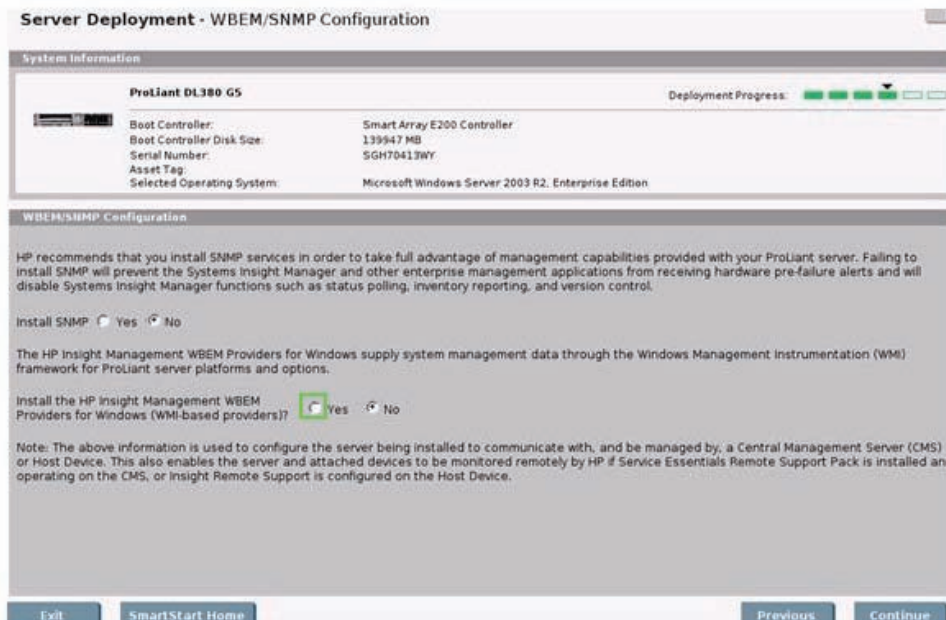
Click the Task button. Your customer requires an application for health monitoring of a ProLiant server. His internal policies, prevent him from using SNMP. Click on the option that you must check during assisted installation from the SmartStart CD.

Click on the option you must check during assisted installation from the SmartStart CD.



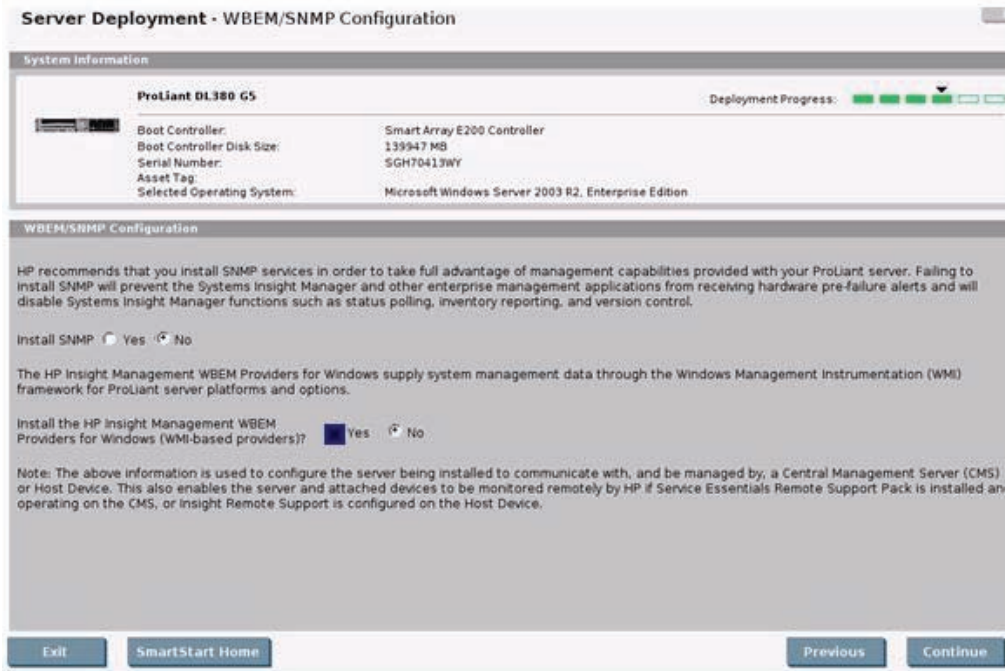
Answer:

Click on the option you must check during assisted installation from the SmartStart CD.



Explanation:

Click on the option you must check during assisted installation from the SmartStart CD.



QUESTION NO: 23

You finished an installation of Windows Server 2008 on a ProLiant server, but you notice in device manager that some devices are not installed properly and the HP System Management Homepage (SMH) is not available. How can these issues be resolved?

- A. Assign a different IRQ for each of the devices using the ROM-Based Setup Utility.
- B. Restore the operating system to the latest checkpoint using the System Recovery feature.
- C. Enable missing devices in the ROM-Based Setup Utility and change firewall settings to enable communication with the SMH on port 2381.
- D. Install the latest ProLiant Support Pack for Windows Server 2008.

Answer: D

Explanation:

QUESTION NO: 24

When preparing a Scope of Work to assess RAID requirements, which factor is the most critical to properly sizing the solution?

- A. disaster tolerance

- B. cache size
- C. mirror sizing
- D. disk stripe size

Answer: A

Explanation:

QUESTION NO: 25

Which action is recommended when accessing Version Control Repository Manager (VCRM) from Version Control Agent (VCA)?

- A. use Built in VCRM user account
- B. use Administrator account
- C. modify existing account VCA Operator
- D. create a separate account for VCRM with administrator rights and use this account

Answer: D

Explanation:

QUESTION NO: 26

Which statements are correct regarding ProLiant 100-Series servers? (Select two.)

- A. They use the Rom-Based Setup Utility (RBSU).
- B. They support the Intelligent Platform Management Interface (IPMI).
- C. They can have Lights-Out 100 or Lights-Out 100i for remote management.
- D. They ship with HP Insight Foundation Suite for ProLiant.
- E. They use Trusted Platform Modules for setup.

Answer: B,C

Explanation:

QUESTION NO: 27

Which common industry standard technology is used to monitor servers, storage and network devices?

- A. Simple Environment Management Protocol (SEMP)
- B. Automatic Server Recovery (ASR)
- C. Intelligent Platform Management Interface (IPMI)
- D. Internet Control Message Protocol (ICMP)

Answer: C

Explanation:

QUESTION NO: 28

What provides a consolidated view of HP server system health?

- A. Array Diagnostic Utility (ADU)
- B. SmartStart CD
- C. ROM-Based Setup Utility (RBSU)
- D. System Management Homepage (SMH)

Answer: D

Explanation:

QUESTION NO: 29

What is used to access the Integrated Management Log?

- A. Easy Set-up CD
- B. Event Viewer
- C. Insight Diagnostics
- D. Firmware Maintenance CD

Answer: C

Explanation:

QUESTION NO: 30

Which HP server series provides Watchdog Timer?

- A. 100 Series
- B. 300 Series

- C. 500 Series
- D. 700 Series

Answer: A

Explanation:

QUESTION NO: 31

Which features do Serial Attached SCSI and Fiber Channel have in common? (Select two.)

- A. dual port hard drive interface
- B. support for up to 15 meters external cable length
- C. half duplex data transfer
- D. compatible frame format
- E. the number of supported devices

Answer: A,D

Explanation:

QUESTION NO: 32

What is needed to install storage controller drivers during a Windows operating system installation from a CD using virtual floppy in a ProLiant SL170z G6 Server?

- A. iLO firmware update .bin file
- B. SmartStart version 8.30 or higher
- C. LO100i Advance Pack
- D. iLO 2 Advance Pack

Answer: C

Explanation:

QUESTION NO: 33

Which storage solution offers a highly available configuration and 24x7 software support?

- A. EVA4400
- B. MSA2000

- C. LH P4000
- D. X3000

Answer: A

Explanation:

QUESTION NO: 34

A customer complains about bad performance on their DL380 G6 ESX Server. What can be done in the RBSU to improve performance?

- A. enable memory mirroring
- B. disable cores
- C. enable Intel virtualization
- D. disable VT-d2 technology

Answer: C

Explanation:

QUESTION NO: 35

What is the result of having RAID levels with stripe sizes that are too large?

- A. many cross-stripe transfers (split I/Os) and reduced performance
- B. poor load balancing across drives
- C. higher file fragmentation rate
- D. fewer cross-stripe transfers (split I/Os) and increased performance

Answer: B

Explanation:

QUESTION NO: 36

What can be used to determine the cause of poor performance issues?

- A. VMM
- B. PMP
- C. VPM

D. IPM

Answer: B

Explanation:

QUESTION NO: 37

Your customer has ProLiant servers with redundant power supplies. He wants a high availability redundant UPS solution. What should you advise him to buy?

- A.** one UPS equipped with the optional UPS Management Card
- B.** two UPSs, both equipped with the optional UPS Management Card
- C.** two UPSs, both equipped with an optional Extended Runtime Module
- D.** one UPS with an optional Extended Runtime Module

Answer: B

Explanation:

QUESTION NO: 38

Which HP utility provides a simplified view of HP web-enabled management agents?

- A.** HP Insight Diagnostics Online Edition
- B.** Intelligent Platform Management Interface (IPMI) Event Log
- C.** HP System Management Homepage
- D.** Integrated Management Log

Answer: C

Explanation:

QUESTION NO: 39

Which troubleshooting step are you currently performing when replacing parts?

- A.** evaluate the data
- B.** check if problem is resolved
- C.** develop the action plan
- D.** execute the action plan

Answer: D

Explanation:

QUESTION NO: 40

Which step of the HP Troubleshooting Methodology includes documenting the results of each attempt to resolve a problem?

- A. implement preventive measures
- B. determine whether the problem is solved
- C. execute the action plan
- D. develop the action plan

Answer: C

Explanation:

QUESTION NO: 41

Which service offering provides the customer with two-hour response time for software issues and four-hour on-site response commitment for hardware issue resolution?

- A. 4-Hour 24x7 Same Day
- B. Proactive 24
- C. 4-Hour Same Business Day
- D. HP Support Plus

Answer: B

Explanation:

QUESTION NO: 42

What do you recommend to a customer once you have fixed the issue and verified the solution?
(Select two.)

- A. Implement a new set of procedures, software, and administrative maintenance to attain a higher level of availability.
- B. Uninstall HP software from servers to prepare them for production.
- C. List the order of people or groups to contact and the information needed by each.

- D. Add fault-tolerant elements to critical subsystems.
- E. Configure HP Insight Service agents to be notified when the problem reoccurs.

Answer: A,D

Explanation:

QUESTION NO: 43

Which preventive measure should you recommend to a customer to provide proactive notification of critical updates and product changes for ProLiant servers?

- A. HP IT Resource Center
- B. Online Agent Reference Set
- C. Subscriber's Choice
- D. Version Control Repository Manager

Answer: C

Explanation:

QUESTION NO: 44

Which technologies are features of Advanced Memory Protection of Intel CPUs utilized in HP ProLiant G6 Servers? (Select three.)

- A. memory mirroring
- B. RAID memory
- C. Lockstep Support
- D. interleaved memory
- E. Advanced ECC

Answer: A,C,E

Explanation:

QUESTION NO: 45

What are characteristics of Care Pack Services? (Select two.)

- A. pre-failure notification

- B. can be purchased with the server
- C. can be purchased during warranty period
- D. parts and labor support

Answer: B,C

Explanation:

QUESTION NO: 46

When implementing an offsite backup storage plan, which backup solution should be considered when requirements call for remote mirror operations with access to the primary server?

- A. cold site
- B. mirrored site
- C. hot site
- D. warm site

Answer: C

Explanation:

QUESTION NO: 47

How many simultaneous threads can a fully populated dual socket, six core AMD-based server execute?

- A. 2 threads
- B. 6 threads
- C. 12 threads
- D. 24 threads

Answer: C

Explanation:

QUESTION NO: 48

What can be used to verify system ROM family and version using the online method? (Select two.)

- A. Array Configuration Utility

To Read the [Whole Q&As](#), please purchase the [Complete Version](#) from [Our website](#).

Trying our product !

- ★ **100%** Guaranteed Success
- ★ **100%** Money Back Guarantee
- ★ **365 Days** Free Update
- ★ **Instant Download** After Purchase
- ★ **24x7** Customer Support
- ★ Average **99.9%** Success Rate
- ★ More than **69,000** Satisfied Customers Worldwide
- ★ Multi-Platform capabilities - **Windows, Mac, Android, iPhone, iPod, iPad, Kindle**

Need Help

Please provide as much detail as possible so we can best assist you.

To update a previously submitted ticket:



 One Year Free Update <p>Free update is available within One Year after your purchase. After One Year, you will get 50% discounts for updating. And we are proud to boast a 24/7 efficient Customer Support system via Email.</p>	 Money Back Guarantee <p>To ensure that you are spending on quality products, we provide 100% money back guarantee for 30 days from the date of purchase.</p>	 Security & Privacy <p>We respect customer privacy. We use McAfee's security service to provide you with utmost security for your personal information & peace of mind.</p>
---	---	--

[Guarantee & Policy](#) | [Privacy & Policy](#) | [Terms & Conditions](#)

Any charges made through this site will appear as Global Simulators Limited.

All trademarks are the property of their respective owners.

Copyright © 2004-2015, All Rights Reserved.