

100% Money Back
Guarantee

Vendor:HP

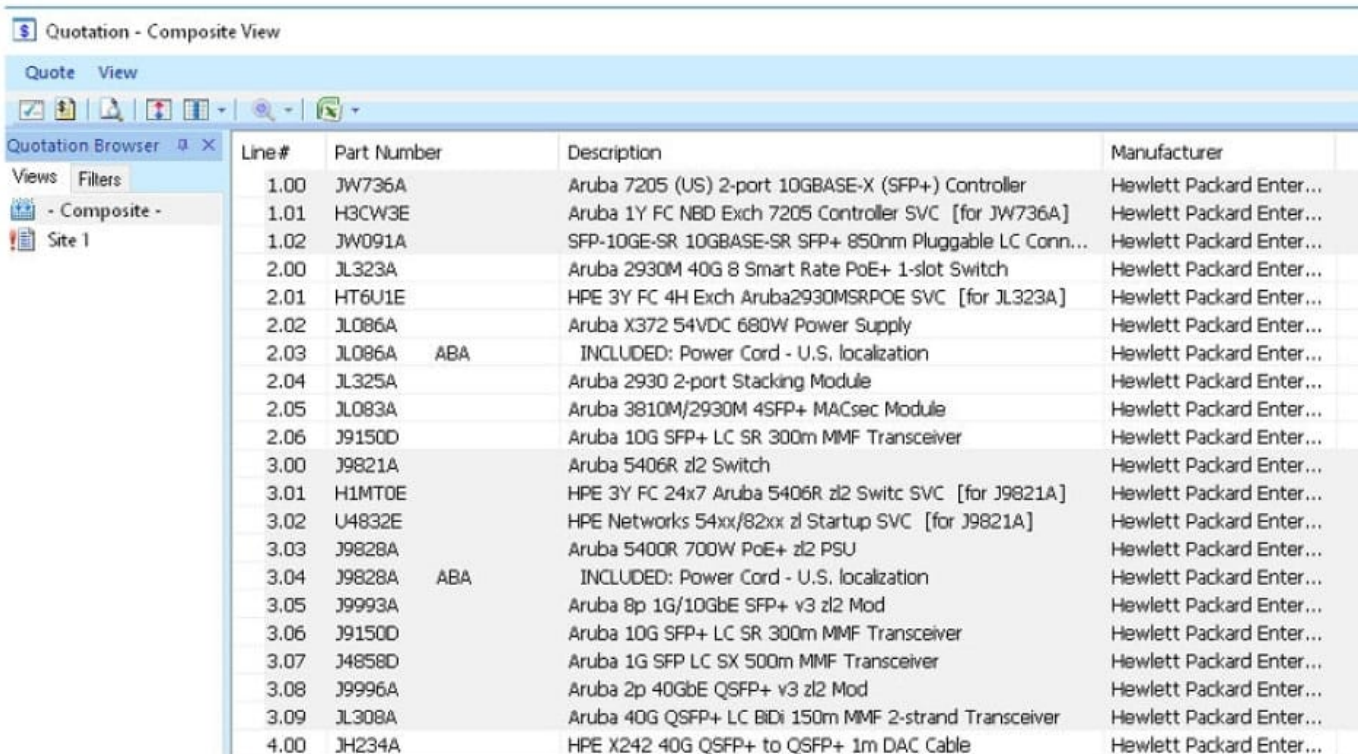
Exam Code:HPE6-A80

Exam Name:Aruba Certified Design Expert Written

Version:Demo

QUESTION 1

Refer to the exhibit.



Line#	Part Number	Description	Manufacturer
1.00	JW736A	Aruba 7205 (US) 2-port 10GBASE-X (SFP+) Controller	Hewlett Packard Enter...
1.01	H3CW3E	Aruba 1Y FC NBD Exch 7205 Controller SVC [for JW736A]	Hewlett Packard Enter...
1.02	JW091A	SFP-10GE-SR 10GBASE-SR SFP+ 850nm Pluggable LC Conn...	Hewlett Packard Enter...
2.00	JL323A	Aruba 2930M 40G 8 Smart Rate PoE+ 1-slot Switch	Hewlett Packard Enter...
2.01	HT6U1E	HPE 3Y FC 4H Exch Aruba2930MSRPOE SVC [for JL323A]	Hewlett Packard Enter...
2.02	JL086A	Aruba X372 54VDC 680W Power Supply	Hewlett Packard Enter...
2.03	JL086A	ABA INCLUDED: Power Cord - U.S. localization	Hewlett Packard Enter...
2.04	JL325A	Aruba 2930 2-port Stacking Module	Hewlett Packard Enter...
2.05	JL083A	Aruba 3810M/2930M 4SFP+ MACsec Module	Hewlett Packard Enter...
2.06	J9150D	Aruba 10G SFP+ LC SR 300m MMF Transceiver	Hewlett Packard Enter...
3.00	J9821A	Aruba 5406R zl2 Switch	Hewlett Packard Enter...
3.01	H1MT0E	HPE 3Y FC 24x7 Aruba 5406R zl2 Switc SVC [for J9821A]	Hewlett Packard Enter...
3.02	U4832E	HPE Networks 54xx/82xx zl Startup SVC [for J9821A]	Hewlett Packard Enter...
3.03	J9828A	Aruba 5400R 700W PoE+ zl2 PSU	Hewlett Packard Enter...
3.04	J9828A	ABA INCLUDED: Power Cord - U.S. localization	Hewlett Packard Enter...
3.05	J9993A	Aruba 8p 1G/10GbE SFP+ v3 zl2 Mod	Hewlett Packard Enter...
3.06	J9150D	Aruba 10G SFP+ LC SR 300m MMF Transceiver	Hewlett Packard Enter...
3.07	J4858D	Aruba 1G SFP LC SX 500m MMF Transceiver	Hewlett Packard Enter...
3.08	J9996A	Aruba 2p 40GbE QSFP+ v3 zl2 Mod	Hewlett Packard Enter...
3.09	JL308A	Aruba 40G QSFP+ LC BiDi 150m MMF 2-strand Transceiver	Hewlett Packard Enter...
4.00	JH234A	HPE X242 40G QSFP+ to QSFP+ 1m DAC Cable	Hewlett Packard Enter...

The network architect has created the 60M shown in the exhibit for a complete new wired and wireless solution for a customer. This solution the customer wants to discover and manage every component of the network in Airwave, including switches, MCS, APS, and switches.

How many AirWave licenses does the architect need to add?

- A. 30
- B. 222
- C. 7122
- D. 6930

Correct Answer: A

QUESTION 2

For which scenario do Aruba CX 6300M Series switches meet the needs for an upgrade of the wired access layer while the Aruba CX 630QF Series switches do not?

- A. The customer wants to utilize the Aruba AP-515 support for 100 Gbps connectivity.
- B. The customer wants to utilize LACP on AP515 in VSF switch configuration.

C. The Aruba CX6300M supports 10GBase-T connectivity with AP-515.

D. The Aruba CX 630DM support up to 75W PoE+ per port

Correct Answer: D

QUESTION 3

A hospital wireless network must support many different types of users and devices, including: Visitors who access the Internet Admin staff, who run applications such as scheduling Medical staff, who look up patient info on their tablets Patient monitoring devices, which must not lose any traffic Communicator badges, which support real-time voice to allow nurses and doctors to communicate

The hospital needs to ensure that the most vital and time-sensitive traffic is prioritized and that visitors do not interfere with hospital applications. The MC should mark traffic that passes through it for an appropriate priority.

Which plan meets the needs? (The plans describe firewall roles and rules but do not need to use correct syntax. Note that

security roles are also not included.)

- A. Medical staff = Highest. Patient monitoring = Highest. Admin staff - High. Communicator = Normal. Visitors = Low.
- B. Communicator = Highest. Patient monitoring = Highest. Medical staff = High. Admin staff = Normal: Visitors = Low.
- C. Patient monitoring = Highest. Medical staff = Highest. communicators = High. Admin staff = High. Visitors = Normal.
- D. Medical staff = Highest. Communicator = High. Patient monitoring = High. Admin = High. Visitors = Normal

Correct Answer: A

QUESTION 4

A customer has multiple, very small branch sites that require just one or two APs each. The office has a local Internet connection, but all of the traffic is destined To the corporate data center, which has an Aruba wireless solution. Which branch office solution best meets the customer needs?

- A. RAPs and no branch office controllers
- B. IAPs and 7005 branch office controllers with an 3D-WAN license
- C. CAPS and 7005 branch office controllers
- D. RAPs and 7005 branch office controllers with an. SD-WAN license

Correct Answer: C

QUESTION 5

An indoor basketball stadium has 5,000 seats in two rings:

The stadium has a ceiling height of 60 feet (18 m).

There is a catwalk around the perimeter of the basketball court, between the court and the seating areas.

This catwalk is 40 feet (12 m) from the floor.

There are two scoreboards at either end of the stadium.

The construction of the stadium is concrete and steel.

The customer does not want an under-seat, picoceli deployment.

Which AP model is appropriate to provide coverage in the main stadium bowl?

A. AP-577

B. AP-555

C. AP-575

D. AP-505

Correct Answer: A

QUESTION 6

Refer to the exhibit.

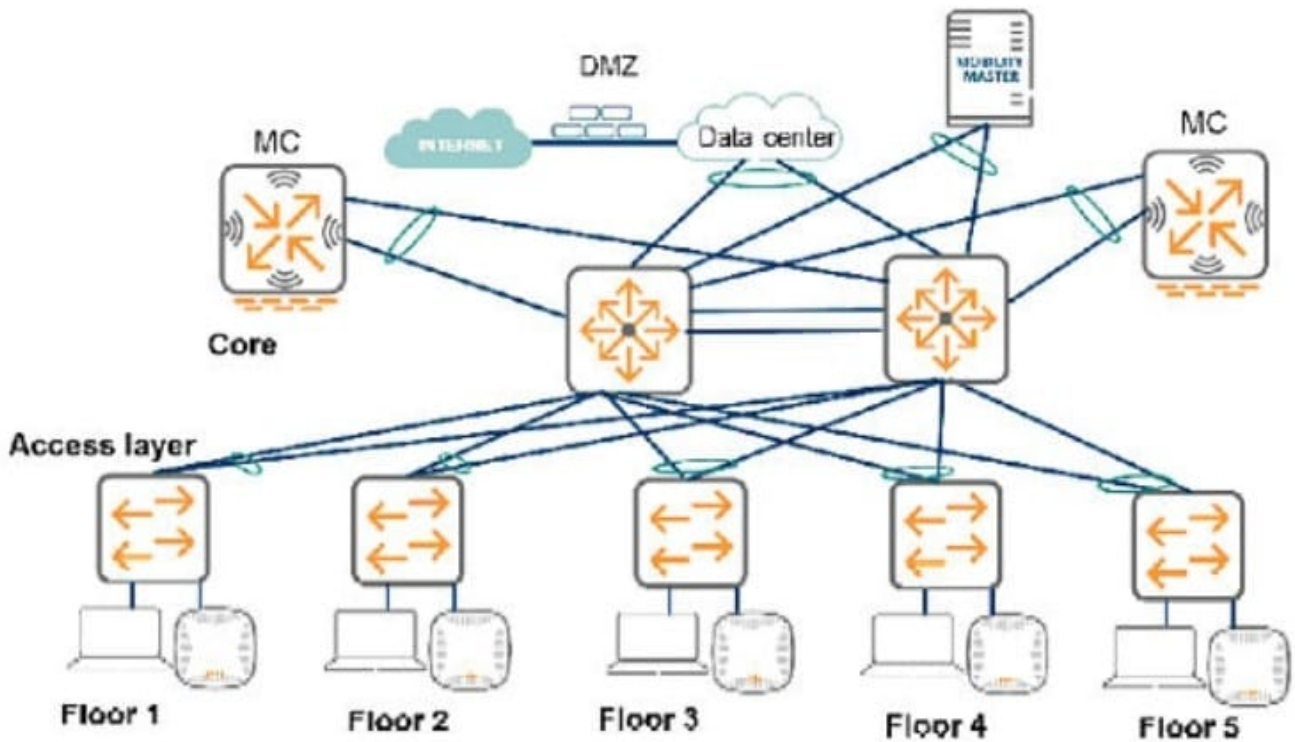


Exhibit: A49.01114316-134

The exhibit shows the topology for a new Aruba solution. The MCs are in a cluster and support all of the wireless traffic in

the network. The core switches route all traffic and support all VLANs. The access layer switches do NOT use tunneled node or dynamic segmentation.

The customer has indicated that it has these VLANs for user devices.

*

VLAN 11 for Floor 1 employee wired devices

*

VLAN 12 for Floor 2 employee wired devices

*

VLAN 13 for Floor 3 employee wired devices

*

VLAN 14 for Floor 4 employee wired devices

*

VLAN 15 for Floor 5 employee wired devices

*

VLAN 101 for all employee wireless devices

*

VLAN 102 for all guest wireless devices

In which locations should the architect plan the VLANs?

A.

VLANs 11-15 on one MC. VLANs 101 and 102 on the other MC. (Other VLANs will be used on the access layer switches.)

B.

VLANs 11-15, 101, and 102 on both MCs. (Other VLANs will be used on the access layer switches.)

C.

VLANs 11-15 on the access layer switches on the corresponding floor; VLAN 101 on one MC and VLAN 102 on the other MC

D.

VLANs 11-15 on the access layer switches on the corresponding floor; VLANs 101 and 102 on both MCs.

Correct Answer: C

QUESTION 7

Refer to the exhibit.

Line#	Part Number	Description	Manufacturer	Unit Price	Quantity	Total	Price List
1.0	JW744A	Aruba 7210 (US) 4p 10GBase-K (SFP+) 2p Dual Pors (10/1...	Hewlett Packard Enter...	\$17,045.00	2	\$35,690.00	USA Price List (USD)
1.1	H3DR1E	Aruba 1Y FC NBD Exch 7210 Controller SVC [for JW744A]	Hewlett Packard Enter...	\$2,618.00	2	\$5,236.00	USA Price List (USD)
1.2	JW657A	Aruba PSU-350-AC 7206 Series S3506-24T S3506-48T and...	Hewlett Packard Enter...	\$520.00	2	\$1,040.00	USA Price List (USD)
1.3	JW124A	PC AC NA North America AC Power Cord	Hewlett Packard Enter...	\$5.00	4	\$20.00	USA Price List (USD)
2.0	JZ337A	Aruba AP-535 (US) Unified AP	Hewlett Packard Enter...	\$1,570.00	398	\$624,860.00	USA Price List (USD)
2.1	H66E5E	Aruba 1Y FC NBD Exch AP 535 SVC [for JZ337A]	Hewlett Packard Enter...	\$66.00	398	\$26,268.00	USA Price List (USD)
2.2	Q9009A	AP-MNT-MF10-B AP mount bracket 10-pack B [split order]	Hewlett Packard Enter...	\$205.00	39.8	\$8,159.00	USA Price List (USD)
3.0	JY791A	Aruba MM-MM-1K Mobility Master 1000 AP MM Appliance	Hewlett Packard Enter...	\$18,895.00	1	\$18,895.00	USA Price List (USD)
3.1	H66E5E	Aruba 1Y FC NBD Exch MM MM-1K Mob1000SVC [for JY79...	Hewlett Packard Enter...	\$2,770.00	1	\$2,770.00	USA Price List (USD)
3.2	JW471AAE	Aruba LIC-ENT Enterprise (LIC-AP LIC-PDF LIC-RFP and LIC...	Hewlett Packard Enter...	\$290.00	400	\$120,000.00	USA Price List (USD)
3.3	H2KX0E	Aruba 1Y FC 24x7 License On Bundle SVC [for JW471AAE]	Hewlett Packard Enter...	\$46.00	400	\$18,400.00	USA Price List (USD)
4.0	JZ337A	Aruba AP-535 (US) Unified AP	Hewlett Packard Enter...	\$1,570.00	2	\$3,140.00	USA Price List (USD)
4.1	H66E5E	Aruba 1Y FC NBD Exch AP 535 SVC [for JZ337A]	Hewlett Packard Enter...	\$66.00	2	\$132.00	USA Price List (USD)
4.2	R315A	AP-MNT-B AP mount bracket individual B: suspended ceiling...	Hewlett Packard Enter...	\$30.00	2	\$60.00	USA Price List (USD)
Quote Total						\$664,670.00	

A customer needs to create a proposal for a full wireless solution for a customer. The customer has indicated that the MCs will connect to Aruba CX Switches at the core and the APs will connect to PoE-i switches at the edge. The customer requires that the wireless solution support at least 50 Mbps concurrently per AP. The architect has created a BOM for a Mobility Master (MM), two MC 7210s, and 400 AP-535S. The exhibit shows this BOM.

Which components has the architect forgotten?

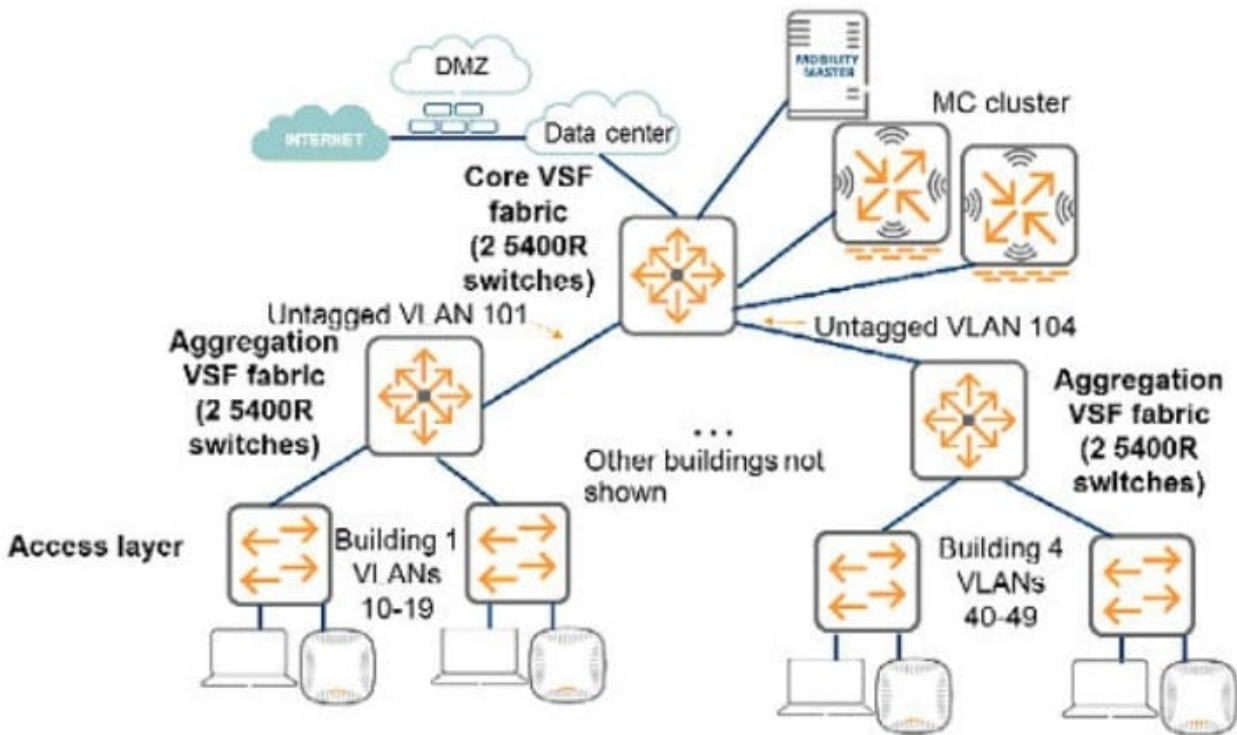
A. SFP+ transceivers for the MC connections

- B. Smart Rate PoE+ injectors for the APs
- C. Mounting Kits for the MOs and MM
- D. Sufficient Enterprise licenses for the APs on both MCs

Correct Answer: C

QUESTION 8

Refer to the exhibit.



A customer has the wired infrastructure shown in the exhibit. The customer is in the process of expanding their wireless services. They will now add a new wireless solution, with mobility controllers (MCs) connected as shown. The new wireless solution will support a total of 450 APs and about 26,000 wireless devices. It must provide seamless roaming across the entire campus.

After the new deployment, both wired and wireless devices experience IP connectivity issues.

Which change to the existing infrastructure should the architect recommend to support all of the customer requirements?

- A. The wired VLANs should be combined into a single VLAN and a single subnet
- B. The core switches should be replaced with switches that have larger ARP tables.
- C. The MCs should be moved to the aggregation layer, and more MCs added
- D. The core and aggregation switches should disable Virtual Switching Framework (VSF).

Correct Answer: D

QUESTION 9

Which scenario Indicates the need for a wireless mesh?

- A. A nsstorical building has some wired areas and a few areas with no wired or wireless connectivity, walls and ceilings have asbestos. The company needs wireless access across the site.
- B. A hospital needs to provide high availability for wireless services in certain areas which support very critical wireless medical devices. Devices must always be in range of at least two APs.
- C. A company has a small branch office with just one RAP. The company has noticed that performance is poor in some areas of the network and wants to add another AP.
- D. A company needs to provide seamless roaming and wireless access between two buildings. The buildings are about 60 feet (18 m)apart.

Correct Answer: D

QUESTION 10

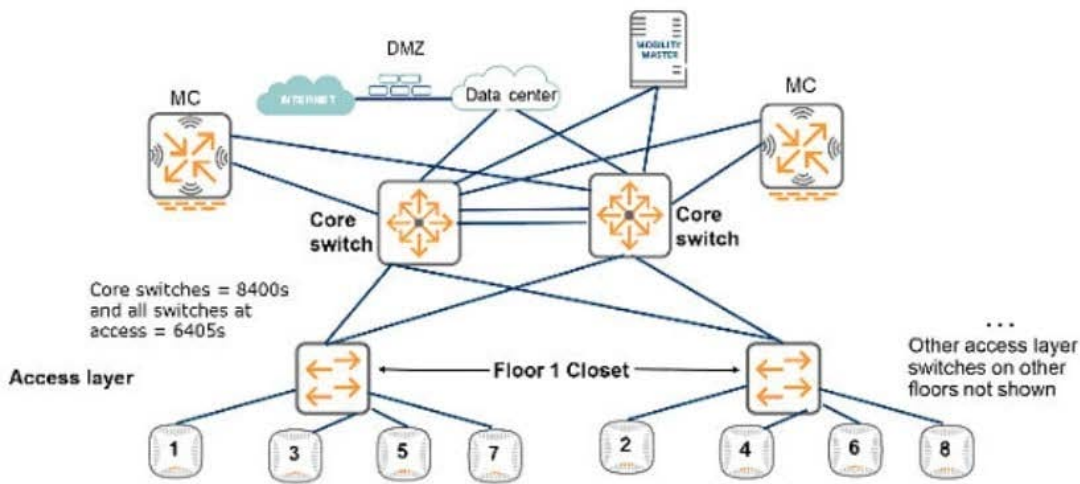
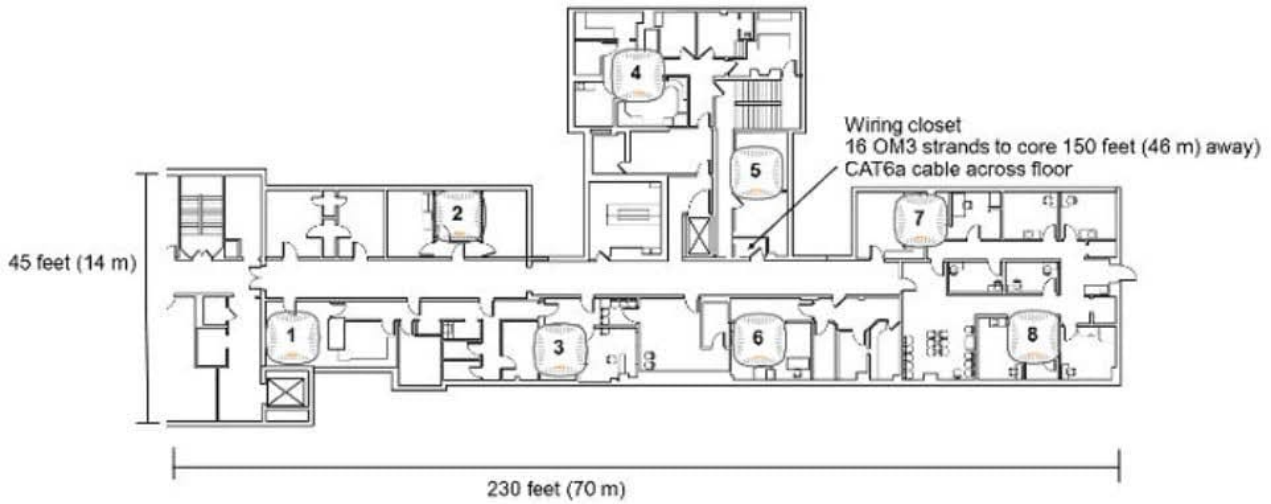
A customer has an Aruba solution with APs, MCs, and an MM The customer also uses AirWave and ClearPass. The customer wants to add Aruba CX Switches, which use per- user tunneled node, to the solution. How should the Aruba CX Switches integrate with the existing solution in order to determine when to tunnel device traffic to MCs?

- A. They should be managed by AirWave with SNMPv3.
- B. They should implement authentication to ClearPass.
- C. They should be directed to MCs by a DHCP or DNS server.
- D. They should be manually added as MDs in MM.

Correct Answer: C

QUESTION 11

Refer to the exhibit.



A customer needs to support resilient wireless services

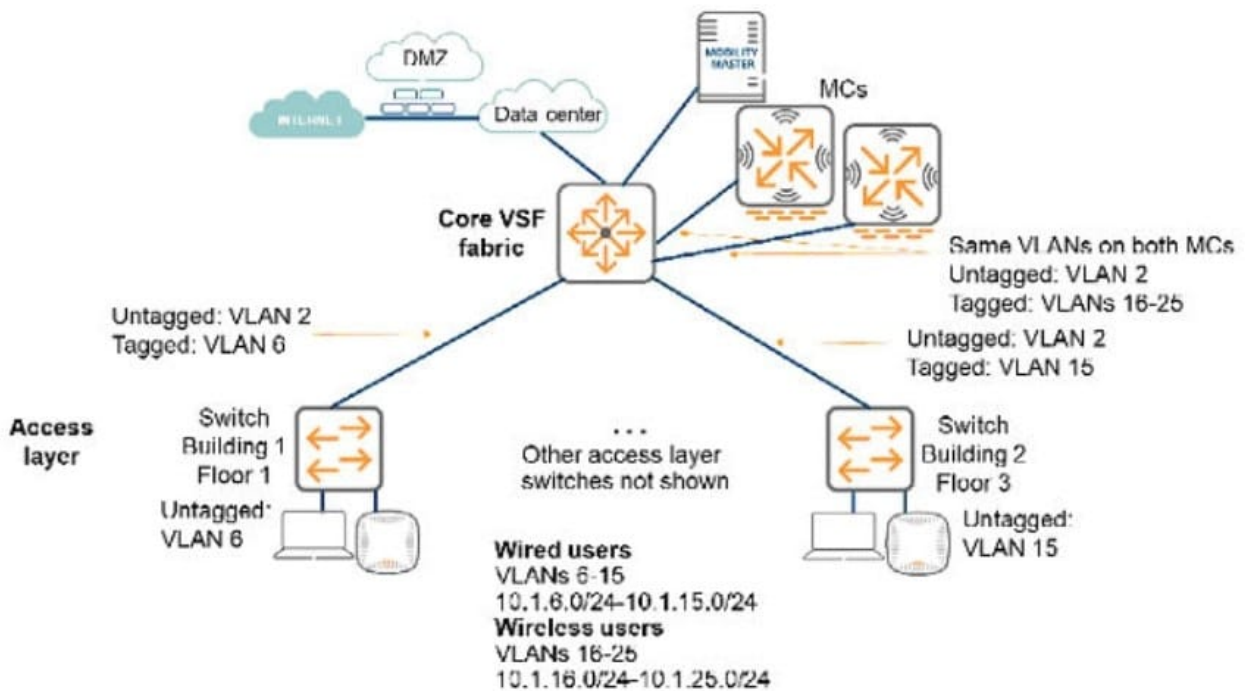
What is one way that this design helps to minimize the impact of a failed access layer switch on these services?

- A. The switches support Smart Rate and dual home AP connections.
- B. The 8400s and 6405s use Virtual Switching Extension (VSX) in core and access.
- C. Each access layer switch has two redundant links to the core.
- D. APs in the same area connect to different switches.

Correct Answer: A

QUESTION 12

Refer to the exhibit.



A customer needs a wireless network upgrade and has these requirements.

-
- Support any applications used on a wired connection
-
- Support up to 2500 wireless clients
- Support seamless roaming from floor to floor and building to building
-

Continue to function seamlessly if one controller fails The architect has designed the logical infrastructure for the network as shown in the exhibit Which change should the architect make to better meet customer requirements and best practices?

- A. Combine the /25 subnets for wireless and wired users into a /16 subnet.
- B. Install additional Mobility Controller.
- C. Combine the /25 subnets for wireless users into a /20 subnet
- D. Place each controller in a different VLAN and subnet.

Correct Answer: B