

Vendor: Vmware

Exam Code: VCP-410

Exam Name: VMware Certified Professional on VI4

Version: Demo

100% Money Back Guarantee

QUESTION NO: 1

An administrator is configuring a VMware HA Cluster for three hosts and their resident VMs. The HA cluster will be configured to support a single host failure and resource reservations must be enforced during a failover event. Assuming default settings, how does HA determine the failover capacity determined?

- A.** Using an average of the total CPU Reservation and Memory Reservation values of all virtual machines in the cluster
- B.** Using the highest CPU Reservation and the Available Memory values for any given virtual machine in the cluster
- C.** Using an average of the total CPU Reservation and Available Memory values of all virtual machines in the cluster
- D.** Using the highest CPU Reservation and Memory Reservation values of any given virtual machine in the cluster

Answer: D

QUESTION NO: 2

vCenter Server is running within a virtual machine (VM) that is part of a VMware HA and DRS cluster. The vCenter Server VM can migrate between all hosts in the cluster by using VMotion. DRS is configured for partial automation.

What happens if the ESX host that is currently running the vCenter Server VM experiences a power outage?

- A.** VMware HA will restart the vCenter Server VM on another host
- B.** This situation cannot occur because vCenter Server cannot be installed on a VMware HA cluster
- C.** vCenter Server will remain offline, but all virtual machines on the remaining hosts will continue

without interruption

D. All DRS cluster operations will be unavailable until the failed ESX Host is brought back online

Answer: A

QUESTION NO: 3

The maximum number of failover hosts in a VMware HA cluster is:

A. 32

B. 16

C. 8

D. 4

Answer: D

QUESTION NO: 4

Which of the following is the technology used by VMware Fault Tolerance?

A. VMware vCluster

B. VMware vLockstep

C. VMware vShield

D. VMware vmSafe

Answer: B

QUESTION NO: 5

When adjusting the slider to allocate resources for a Virtual Machine, the yellow indicator on the resource bar indicates:

A. a limit has been imposed by the Resource Pool or the ESX Host where the VM is running

B. the current configured limit value, if one exists

C. the maximum resources that can be reserved for the virtual machine

D. the current configured reservation value, if one exists

Answer: A

QUESTION NO: 6

In the vSphere Client the Virtual Machine Resource Allocation tab shows Host Memory and Guest Memory. What is the meaning of these terms? (Choose Two):

- A. Guest Memory is amount of physical memory that has been allocated to a Virtual Machine
- B. Guest Memory is the actual memory usage of the Virtual Machine
- C. Host memory is the amount of physical memory that has been allocated to a Virtual Machine
- D. Host memory is the actual memory usage of the Virtual Machine.

Answer: B,C

QUESTION NO: 7

A developer wishes to disable logging for a number of virtual machines used for testing purposes, in order to maximize available datastore space. The virtual machines reside on an ESX Host managed by vCenter Server. Which of the following methods can be used to disable virtual machine logging?

- A. From the Configuration tab for the ESX Host running the virtual machines, choose Advanced Settings. Set the Disable Logging parameter to Yes
- B. Edit the settings for each virtual machine. Under Options > Advanced > General, uncheck Enable Logging
- C. Manually edit each virtual machines .vmx file and set logging=false
- D. Connect a vSphere Client to vCenter Server. Under the Administration drop-down, check Disable Virtual Machine Logging

Answer: B

QUESTION NO: 7

When creating an MSCS Cluster across 2 ESX 4 Hosts, what type of Virtual Disks can be used?

- A. Raw Device Mapped (RDM) disks in Physical Compatibility Mode only
- B. Raw Device Mapped (RDM) disks in Virtual Compatibility Mode only
- C. Raw Device Mapped (RDM) disks in Physical or Virtual Compatibility Mode, or virtual disks on a shared VMFS datastore
- D. Raw Device Mapped (RDM) disks in Physical or Virtual Compatibility Mode

Answer: D

QUESTION NO: 8

You have a newly set up 2 node cluster with HA and DRS enabled and DRS is in fully automated mode. Following best practices guidelines, you have set up the connection types on separate physical networks. While testing DRS, you notice no virtual machines are moving from one ESX host to the other despite great disparity in resource utilization between the ESX hosts. The image shows the error and the network configuration for one of the hosts.

What should you do to fix this problem?

- A. Enable the VMkernel port for vMotion.
- B. Disable HA for this cluster.
- C. Change the IP address to a valid address on the VMkernel network.
- D. Change the vSwitch connection to the Service Console network interface.

Answer: C

QUESTION NO: 9

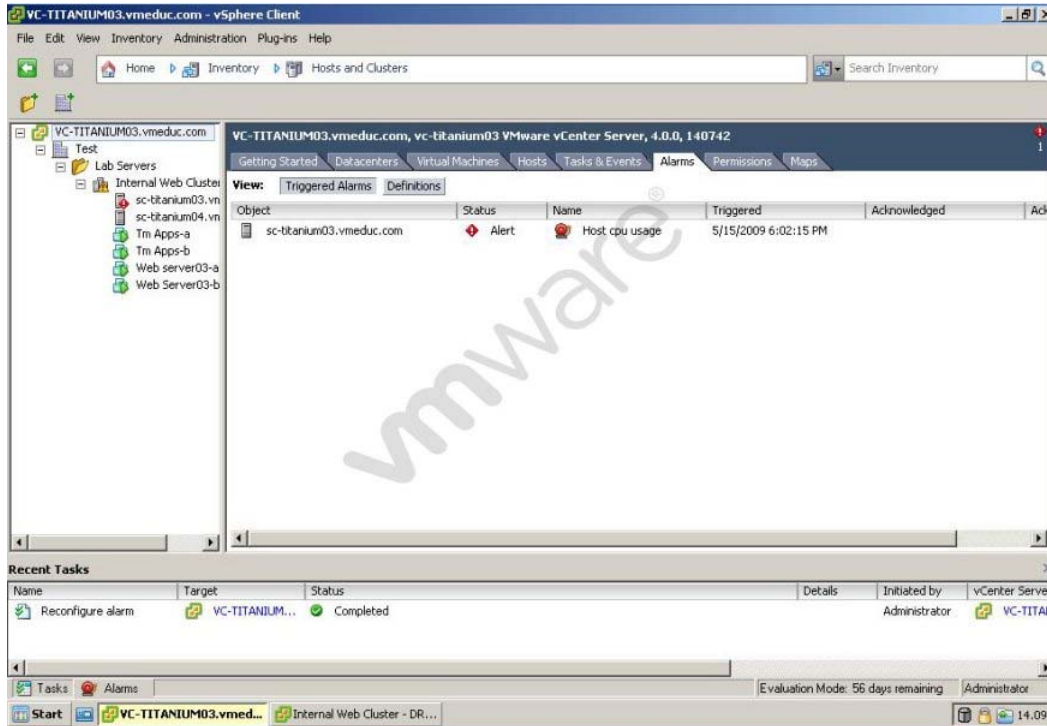
A new LUN has been presented to two ESX Servers, ESXA and ESXB. The LUN can be seen from both servers. A new VMFS-3 volume is created on the LUN using a vSphere Client attached to ESX Server B. The new datastore is visible on ESX Server B, but not on ESX Server A. What steps must be taken to make the datastore visible to ESX Server A?

- A. Perform a Rescan operation on ESX Server B
- B. Modify LUN masking settings on the storage array
- C. Reboot ESX Server A
- D. Perform a Rescan operation on ESX Server A

Answer: D

QUESTION NO: 10

(Click the Exhibit button)



Users are having difficulty accessing a web server since a new web application was configured to run on sc-titanium03.vmeduc.com. The vSphere client reports the error shown in the exhibit. DRS is set to fully automated mode, but the problem has not resolved.

Which of the following actions could be taken to resolve the issue?

- A. Power down one or more virtual machines on the ESX Host running the web server virtual machine and migrate them to the other ESX Host in the cluster.
- B. Migrate one or more running virtual machines on the ESX Host running the web server virtual machine to the other ESX Host in the cluster.
- C. Add another ESX Host to the cluster.
- D. Hot add another CPU to the web server virtual machine.

Answer: A

QUESTION NO: 11

During peak operating hours, an Administrator finds that a business critical application is not performing as well as during normal hours. Which of the following memory management methods could be used to guarantee the application performs well at all times?

- A.** Set a Reservation equal to the Average Memory utilization of the virtual machine running the application
- B.** Set the Share level to High for the virtual machine running the application and set all other virtual machines to Low
- C.** Set a Limit equal to the Peak Memory utilization of the virtual machine running the application
- D.** Set a Reservation equal to the Configured Memory of the virtual machine running the application

Answer: D

QUESTION NO: 12

What is a function of the vmmemctl driver?

- A.** reclaims unused memory from the guest OS
- B.** allows the operation of unsupported guest OS types
- C.** enables transparent page sharing
- D.** enables swapping of the virtual machines

Answer: A